

Recombinant Human ASF1A protein ab84211

1 图像

描述	
产品名称	重组人ASF1A蛋白
纯度	> 90 % SDS-PAGE. ab84211 is purified using conventional chromatography techniques.
表达系统	Escherichia coli
蛋白长度	Full length protein
无动物成分	No
性质	Recombinant
种属	Human
序列	MRGSHHHHHH GMASMTGGQQ MGRDLYDDDD KDRWGSMKV QVNNVVLDN PSPFYNPFQF EITFECIEDL SEDLEWKIIY VGSAESEEYD QVLDSVLVGP VPAGRHMVFV QADAPNPGLI PDADAVGVTV VLITCTYRGQ EFIRVGYVVN NEYTETELRE NPPVKPDFSK LQRNILASNP RVTRFHINWE DNTEKLEDAE SSNPNLQSLL STDALPSASK GWSTSENSLN VMLESHMDCM

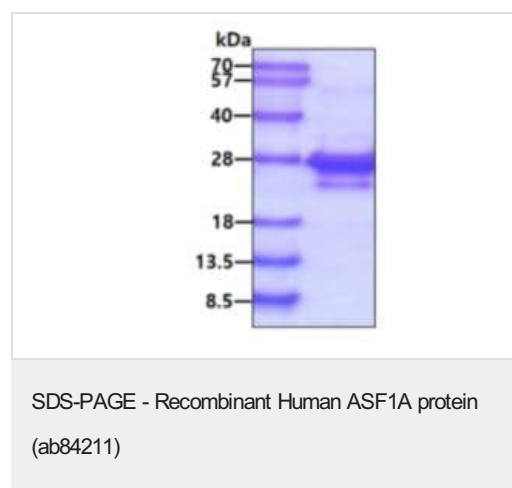
技术指标	
Our Abpromise guarantee covers the use of ab84211 in the following tested applications.	
The application notes include recommended starting dilutions; optimal dilutions/concentrations should be determined by the end user.	
应用	SDS-PAGE
形式	Liquid
补充说明	Endotoxin Level: < 1.0 EU per 1 µg of protein (determined by LAL method).

制备和贮存	
稳定性和存储	Shipped at 4°C. Upon delivery aliquot and store at -20°C or -80°C. Avoid repeated freeze / thaw cycles. pH: 8.00 Constituents: 0.0154% DTT, 0.316% Tris HCl, 10% Glycerol (glycerin, glycerine)

常规信息

功能	Histone chaperone that facilitates histone deposition and histone exchange and removal during nucleosome assembly and disassembly. Cooperates with chromatin assembly factor 1 (CAF-1) to promote replication-dependent chromatin assembly and with HIRA to promote replication-independent chromatin assembly. Required for the formation of senescence-associated heterochromatin foci (SAHF) and efficient senescence-associated cell cycle exit.
组织特异性	Ubiquitously expressed.
序列相似性	Belongs to the ASF1 family.
翻译后修饰	Phosphorylated by TLK1 and TLK2. Highly phosphorylated in S-phase and at lower levels in M-phase.
细胞定位	Nucleus.

图片



3ug by SDS-PAGE under reducing condition and visualized by coomassie blue stain.

Please note: All products are "FOR RESEARCH USE ONLY. NOT FOR USE IN DIAGNOSTIC PROCEDURES"

Our Abpromise to you: Quality guaranteed and expert technical support

- Replacement or refund for products not performing as stated on the datasheet
- Valid for 12 months from date of delivery
- Response to your inquiry within 24 hours
- We provide support in Chinese, English, French, German, Japanese and Spanish
- Extensive multi-media technical resources to help you
- We investigate all quality concerns to ensure our products perform to the highest standards

If the product does not perform as described on this datasheet, we will offer a refund or replacement. For full details of the Abpromise, please visit <https://www.abcam.cn/abpromise> or contact our technical team.

Terms and conditions

- Guarantee only valid for products bought direct from Abcam or one of our authorized distributors