

# Recombinant Human ARL 1 protein ab99261

### 1 图像

#### 描述

产品名称	重组人ARL 1蛋白
纯度	> 95 % SDS-PAGE. ab99261 is purified using conventional chromatography techniques.
表达系统	Escherichia coli
Accession	<b><u>P40616</u></b>
蛋白长度	Full length protein
无动物成分	No
性质	Recombinant
种属	Human
序列	<b>MGSSHHHHHSSGLVPRGSHMGGFFSSIFSSLFGTREMRI LILGLDGAGK TTILYRLQVGEVVTIPIPTIGFNVETVITYKNLKFQVWDLGGQT SIRPYWRC YYNNTDAVIYVVDSCDRDRIGISKSELVAMLEEEELRKAILV VFANKQDM EQAMTSSEMANSGLPALKDRKWQIFKTSATKGTGLDEAMEW LVETLKSR Q</b>
预测分子量	23 kDa including tags
氨基酸	1 to 181
标签	His tag N-Terminus

#### 技术指标

Our **Abpromise guarantee** covers the use of **ab99261** in the following tested applications.

The application notes include recommended starting dilutions; optimal dilutions/concentrations should be determined by the end user.

应用	SDS-PAGE Mass Spectrometry
质谱法	MALDI-TOF
形式	Liquid

#### 制备和贮存

## 稳定性和存储

Shipped at 4°C. Upon delivery aliquot and store at -20°C or -80°C. Avoid repeated freeze / thaw cycles.

pH: 8.00

Constituents: 0.0308% DTT, 0.316% Tris HCl, 40% Glycerol (glycerin, glycerine), 0.58% Sodium chloride

## 常规信息

### 功能

GTP-binding protein that has very low efficiency as allosteric activator of the cholera toxin catalytic subunit, an ADP-ribosyltransferase. Can activate phospholipase D with very low efficiency. Important for normal function of the Golgi apparatus.

### 组织特异性

Detected in heart, liver, lung and liver (at protein level). Detected in fetal heart, lung, liver and kidney. Detected in adult heart, placenta, lung, liver, skeletal muscle, kidney and pancreas.

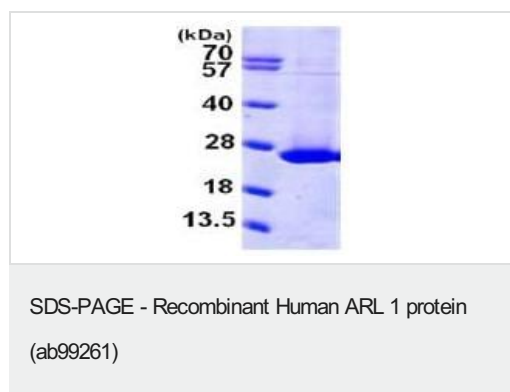
### 序列相似性

Belongs to the small GTPase superfamily. Arf family.

### 细胞定位

Golgi apparatus membrane.

## 图片



15% SDS-PAGE showing ab99261 at approximately 22.5kDa (3µg).

**Please note:** All products are "FOR RESEARCH USE ONLY. NOT FOR USE IN DIAGNOSTIC PROCEDURES"

## Our Abpromise to you: Quality guaranteed and expert technical support

- Replacement or refund for products not performing as stated on the datasheet
- Valid for 12 months from date of delivery
- Response to your inquiry within 24 hours
- We provide support in Chinese, English, French, German, Japanese and Spanish
- Extensive multi-media technical resources to help you
- We investigate all quality concerns to ensure our products perform to the highest standards

If the product does not perform as described on this datasheet, we will offer a refund or replacement. For full details of the Abpromise, please visit <https://www.abcam.cn/abpromise> or contact our technical team.

## Terms and conditions

---

- Guarantee only valid for products bought direct from Abcam or one of our authorized distributors