

Recombinant Human Aquaporin 1 protein ab114210

[1 References](#) [1 图像](#)

描述

| | | |
|-----------|-----------------------|---|
| 产品名称 | 重组人Aquaporin 1蛋白 | |
| 表达系统 | Wheat germ | |
| Accession | <u>P29972</u> | |
| 蛋白长度 | Full length protein | |
| 无动物成分 | No | |
| 性质 | Recombinant | |
| 种属 | Human | |
| 序列 | | MASEFKKKLFWRAVVAEFLATTLFVFISIGSALGFKYPVGNN QTAVQDNV KVS LAFGLSIATLAQSVGHISGAHL NPAVTLGLLLSCQISIFRALMYI IAQCVGAIVATAILSGITSSLTGNSLGRNDLADGVNSGQGLG IEIIGTLQ LV LCVLATTDRRRRDLGGSAPLAIGLSVALGHLLAIDYTGCGIN PARS FGS AVITHNFSNHWIFWVGPFIGGALAVL IYDFILAPRSSDLTDRVKV WTSGQVEEYDL DADDINSRVEMKPK |
| 预测分子量 | 56 kDa including tags | |
| 氨基酸 | 1 to 269 | |

技术指标

Our **Abpromise guarantee** covers the use of **ab114210** in the following tested applications.

The application notes include recommended starting dilutions; optimal dilutions/concentrations should be determined by the end user.

| | |
|------|--------------|
| 应用 | ELISA |
| | SDS-PAGE |
| | Western blot |
| 形式 | Liquid |
| 补充说明 | |

制备和贮存

稳定性和存储

Shipped on dry ice. Upon delivery aliquot and store at -80°C. Avoid freeze / thaw cycles.

pH: 8.00

Constituents: 0.3% Glutathione, 0.79% Tris HCl

常规信息

功能

Forms a water-specific channel that provides the plasma membranes of red cells and kidney proximal tubules with high permeability to water, thereby permitting water to move in the direction of an osmotic gradient.

组织特异性

Expressed in a number of tissues including erythrocytes, renal tubules, retinal pigment epithelium, heart, lung, skeletal muscle, kidney and pancreas. Weakly expressed in brain, placenta and liver.

序列相似性

Belongs to the MIP/aquaporin (TC 1.A.8) family.

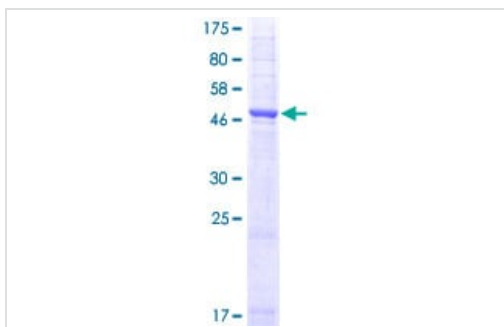
结构域

Aquaporins contain two tandem repeats each containing three membrane-spanning domains and a pore-forming loop with the signature motif Asn-Pro-Ala (NPA).

细胞定位

Membrane.

图片



12.5% SDS-PAGE analysis of ab114210 stained with Coomassie Blue.

SDS-PAGE - Recombinant Human Aquaporin 1 protein (ab114210)

Please note: All products are "FOR RESEARCH USE ONLY. NOT FOR USE IN DIAGNOSTIC PROCEDURES"

Our Abpromise to you: Quality guaranteed and expert technical support

- Replacement or refund for products not performing as stated on the datasheet
- Valid for 12 months from date of delivery
- Response to your inquiry within 24 hours
- We provide support in Chinese, English, French, German, Japanese and Spanish
- Extensive multi-media technical resources to help you
- We investigate all quality concerns to ensure our products perform to the highest standards

If the product does not perform as described on this datasheet, we will offer a refund or replacement. For full details of the Abpromise,

please visit <https://www.abcam.cn/abpromise> or contact our technical team.

Terms and conditions

- Guarantee only valid for products bought direct from Abcam or one of our authorized distributors