

Product datasheet

Recombinant Human Annexin A1/ANXA1 protein (His tag) ab92966

1 图像

描述

产品名称	重组人Annexin A1/ANXA1蛋白(His tag)
纯度	> 90 % SDS-PAGE. Purified by 6xHis tag / Immobilized-metal affinity chromatography (IMAC).
表达系统	Escherichia coli
Accession	<u>P04083</u>
蛋白长度	Full length protein
无动物成分	No
性质	Recombinant
种属	Human
序列	MAMVSEFLKQAWFIENEEQEYVQTVKSSKGGPGSAVSPYPTF NPSSDVAA LHKAIMVKGVDIATIIDILTKRNNRQRIKAAAYLQETGKPL DETLKKAL TGHLEEVVLLKTPAQFDADELRAAMKGLGTDEDTLIEILA SRTNKEIR DINRVYREELKRDLAKDITSDTSGDFRNALLSLAKGDRSEDF GVNEDLAD SDARALYEAGERRKGTDVNVFNTILTTRSYPQLRRVFQKYTK YSKHDMNK VLDLELKGDIKCLTAIVKCATSKPAFFAEKLNQAMKGVGTR HKALIRIM VSRSEIDMNDIKAFYQKMYGISLQCQAILDETKGDYKILVAL CGGN
氨基酸	1 to 346
标签	His tag N-Terminus

技术指标

Our **Abpromise guarantee** covers the use of **ab92966** in the following tested applications.

The application notes include recommended starting dilutions; optimal dilutions/concentrations should be determined by the end user.

应用 Western blot

ELISA
SDS-PAGE
Mass Spectrometry
Liquid

形式

制备和贮存

稳定性和存储

Shipped on dry ice. Upon delivery aliquot and store at -80°C. Avoid freeze / thaw cycles.
pH: 8.00
Preservative: 0.68% Imidazole
Constituents: 0.0078% Beta mercaptoethanol, 0.316% Tris HCl, 2.9% Sodium chloride

常规信息

功能

Calcium/phospholipid-binding protein which promotes membrane fusion and is involved in exocytosis. This protein regulates phospholipase A2 activity. It seems to bind from two to four calcium ions with high affinity.

序列相似性

Belongs to the annexin family.
Contains 4 annexin repeats.

结构域

A pair of annexin repeats may form one binding site for calcium and phospholipid.

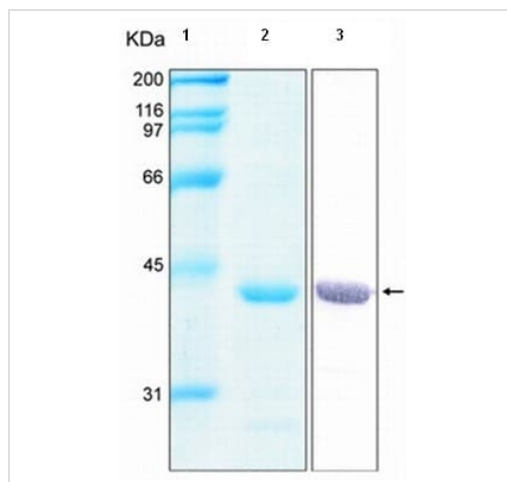
翻译后修饰

Phosphorylated by protein kinase C, epidermal growth factor receptor/kinase and TRPM7.
Phosphorylation results in loss of the inhibitory activity.

细胞定位

Nucleus. Cytoplasm. Cell projection > cilium. Basolateral cell membrane. Found in the cilium, nucleus and basolateral cell membrane of ciliated cells in the tracheal endothelium (By similarity). Found in the cytoplasm of type II pneumocytes and alveolar macrophages.

图片



12% SDS-PAGE showing ab92966

Lane 1 MWM

Lane 2 Stained with Coomassie Blue

Lane 3 Peptide fingerprinting by MALDI-TOF-TOF mass spectrometry

SDS-PAGE - Recombinant Human Annexin
A1/ANXA1 protein (ab92966)

Please note: All products are "FOR RESEARCH USE ONLY. NOT FOR USE IN DIAGNOSTIC PROCEDURES"

Our Abpromise to you: Quality guaranteed and expert technical support

- Replacement or refund for products not performing as stated on the datasheet
- Valid for 12 months from date of delivery
- Response to your inquiry within 24 hours

- We provide support in Chinese, English, French, German, Japanese and Spanish
- Extensive multi-media technical resources to help you
- We investigate all quality concerns to ensure our products perform to the highest standards

If the product does not perform as described on this datasheet, we will offer a refund or replacement. For full details of the Abpromise, please visit <https://www.abcam.cn/abpromise> or contact our technical team.

Terms and conditions

- Guarantee only valid for products bought direct from Abcam or one of our authorized distributors