

Recombinant Human Annexin-11/ANXA11 protein ab101050

1 References 1 图像

描述	
产品名称	重组人Annexin-11/ANXA11蛋白
纯度	> 95 % SDS-PAGE. ab101050 is purified using conventional chromatography techniques.
表达系统	Escherichia coli
Accession	<u>P50995</u>
蛋白长度	Full length protein
无动物成分	No
性质	Recombinant
种属	Human
序列	<div>MGSSHHHHHH SSGLVPRGSH MSYPGYPPPP</div> <div>GGYPPAAPGG GPWGGAAAYPP PPSMPPIGLD</div> <div>NVATYAGQFN QDYLSGMAAN MSGTFGGANM</div> <div>PNLYPGAPGA GYPPVPPGGF GQPPSAQQPV</div> <div>PPYGMYPPPG GNPPSRMPsy PPYPGAPVPG</div> <div>QPMPPPGQQP PGAYPGQPPV TYPGQPPVPL</div> <div>PGQQQPVPsy PGYPGSGTVT PAVPPTQFGS</div> <div>RGTITDAPGF DPLRDAEVLR KAMKGFGTDE</div> <div>QAIIDCLGSR SNKQRQQILL SFKTAYGKDL</div> <div>IKDLKSELsg NFEKTILALM KTPVLFDIYE</div> <div>IKEAIKGVGT DEAClIEILA SRSNEHIREL</div> <div>NRAYKAefKk TLEEAIrSDT SGHFQRLlIS</div> <div>LSQGNRDEST NVDMSLAQRD AQELYAAGEN</div> <div>RLGTDESKFN AVLCSRSRAH LVAVFNEYQR</div> <div>MTGRDIEKSI CREMSGDLEE GMLAVVKCLK</div> <div>NTPAFFAERL NKAMRGAGTK DRTLIRIMVS</div> <div>RSETDlldIR SEYKRMyGKS LYHDisGDTS</div> <div>GdyRKILLKI CGGND</div>
预测分子量	57 kDa including tags
氨基酸	1 to 505
标签	His tag N-Terminus
技术指标	

Our **Abpromise guarantee** covers the use of **ab101050** in the following tested applications.

The application notes include recommended starting dilutions; optimal dilutions/concentrations should be determined by the end user.

应用	Mass Spectrometry
	SDS-PAGE
质谱法	MALDI-TOF
形式	Liquid
补充说明	This product was previously labelled as Annexin A11

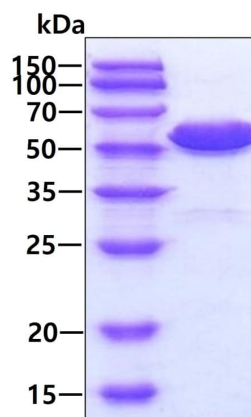
制备和贮存

稳定性和存储	Shipped at 4°C. Upon delivery aliquot and store at -20°C or -80°C. Avoid repeated freeze / thaw cycles. pH: 5 Constituents: PBS, 0.0308% DTT, 20% Glycerol (glycerin, glycerine), 0.58% Sodium chloride
--------	---

常规信息

功能	Binds specifically to calyculin in a calcium-dependent manner (By similarity). Required for midbody formation and completion of the terminal phase of cytokinesis.
序列相似性	Belongs to the annexin family. Contains 4 annexin repeats.
结构域	A pair of annexin repeats may form one binding site for calcium and phospholipid.
细胞定位	Cytoplasm. Melanosome. Nucleus envelope. Nucleus > nucleoplasm. Cytoplasm > cytoskeleton > spindle. Found throughout the nucleoplasm at interphase and during mitosis concentrates around the mitotic apparatus (By similarity). Elevation of intracellular calcium causes relocalization from the nucleoplasm to the nuclear envelope, with little effect on the cytoplasmic pool. Localization to the nuclear envelope is cell-cycle dependent.

图片



SDS-PAGE - Recombinant Human Annexin-11/ANXA11 protein (ab101050)

3µg by SDS-PAGE under reducing condition and visualized by coomassie blue stain.

Please note: All products are "FOR RESEARCH USE ONLY. NOT FOR USE IN DIAGNOSTIC PROCEDURES"

Our Abpromise to you: Quality guaranteed and expert technical support

- Replacement or refund for products not performing as stated on the datasheet
- Valid for 12 months from date of delivery
- Response to your inquiry within 24 hours
- We provide support in Chinese, English, French, German, Japanese and Spanish
- Extensive multi-media technical resources to help you
- We investigate all quality concerns to ensure our products perform to the highest standards

If the product does not perform as described on this datasheet, we will offer a refund or replacement. For full details of the Abpromise, please visit <https://www.abcam.cn/abpromise> or contact our technical team.

Terms and conditions

- Guarantee only valid for products bought direct from Abcam or one of our authorized distributors