

Recombinant Human alpha smooth muscle Actin protein

ab134555

1 [References](#) 1 [图像](#)

描述	
产品名称	重组人alpha smooth muscle Actin蛋白
纯度	> 85 % SDS-PAGE. ab134555 is purified using conventional chromatography techniques.
表达系统	Escherichia coli
Accession	<u>P62736</u>
蛋白长度	Full length protein
无动物成分	No
性质	Recombinant
种属	Human
序列	MGSSHHHHHHSSGLVPRGSHMGSHMEEEDSTALVCDNGSGLC KAGFAGDD APRAVFPSIVGRPRHQGMVGMGQKDSYVGDEAQSKRGILT LKYPIEHGI ITNWDDMEKIWHHSFYNELRVAPEEHPTLLTEAPLNPKANRE KMTQIMFE TFNVPAMYVAIQAVLSLYASGRTTGIVLDSGDGVTHNVPIYE GYALPHAI MRDLAGRDLTDYLMKILTERGYSFVTTAEREIVRDIKEKLC YVALDFEN EMATAASSSSLEKSYELPDGQVITIGNERFRCPETLFQPSFI GMESAGIH ETTYNSIMKCDIDIRKDLYANNVLSGGTTMYPGIADRMQKEI TALAPSTM KIKIIAPPERKYSVWIGGSILASLSTFQQMWISKQEYDEAGP SIVHRKCF
预测分子量	44 kDa including tags
氨基酸	3 to 377
标签	His tag N-Terminus
技术指标	

Our **Abpromise guarantee** covers the use of **ab134555** in the following tested applications.

The application notes include recommended starting dilutions; optimal dilutions/concentrations should be determined by the end user.

应用 Mass Spectrometry

SDS-PAGE

质谱法 MALDI-TOF

形式 Liquid

制备和贮存

稳定性和存储 Shipped at 4°C. Store at +4°C short term (1-2 weeks). Upon delivery aliquot. Store at -20°C or -80°C. Avoid freeze / thaw cycle.

pH: 8.00

Constituents: 0.32% Tris HCl, 10% Glycerol (glycerin, glycerine), 0.88% Sodium chloride

常规信息

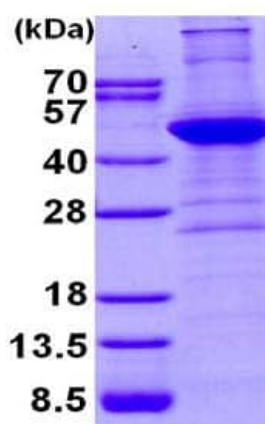
功能 Actins are highly conserved proteins that are involved in various types of cell motility and are ubiquitously expressed in all eukaryotic cells.

疾病相关 Defects in ACTA2 are the cause of aortic aneurysm familial thoracic type 6 (AAT6) [MIM:611788]. AATs are characterized by permanent dilation of the thoracic aorta usually due to degenerative changes in the aortic wall. They are primarily associated with a characteristic histologic appearance known as 'medial necrosis' or 'Erdheim cystic medial necrosis' in which there is degeneration and fragmentation of elastic fibers, loss of smooth muscle cells, and an accumulation of basophilic ground substance.

序列相似性 Belongs to the actin family.

细胞定位 Cytoplasm > cytoskeleton.

图片



15% SDS-PAGE analysis of 3 µg ab134555.

SDS-PAGE - Recombinant Human alpha smooth muscle Actin protein (ab134555)

Please note: All products are "FOR RESEARCH USE ONLY. NOT FOR USE IN DIAGNOSTIC PROCEDURES"

Our Abpromise to you: Quality guaranteed and expert technical support

- Replacement or refund for products not performing as stated on the datasheet
- Valid for 12 months from date of delivery
- Response to your inquiry within 24 hours
- We provide support in Chinese, English, French, German, Japanese and Spanish
- Extensive multi-media technical resources to help you
- We investigate all quality concerns to ensure our products perform to the highest standards

If the product does not perform as described on this datasheet, we will offer a refund or replacement. For full details of the Abpromise, please visit <https://www.abcam.cn/abpromise> or contact our technical team.

Terms and conditions

- Guarantee only valid for products bought direct from Abcam or one of our authorized distributors