

Recombinant Human Alpha 2 Antiplasmin protein ab152615

1 图像

描述

产品名称	重组人Alpha 2 Antiplasmin蛋白
表达系统	Wheat germ
蛋白长度	Full length protein
无动物成分	No
性质	Recombinant
种属	Human
序列	<pre> MVLLWGLLVLSWSCLQGPCSVFSPVSAMEPLGRQLTSGPNQE QVSPLTLL KLGNEPQQTALKSPPGVCSRDPTEQTHRLARAMMAFTAD LFSLVAQT STCPNLILSPLSVALALSHLALGAQNHTLQRLQQVLHAGSGP CLPHLLSR LCQDLGPGAFRLAARMYLQKGFPIKEDFLEQSEQLFGAKPVS LTGKQEDD LANINQWVKEATEGKIQEFLSGLPEDTVLLLLNAIHFQGFWR NKFDPSLT QRDSFHLDEQFTVPVEMMQARTYPLRWFLLLEQPEIQVAHFPP KNNMSFVV LVPTHFEWNVSQVLANLSWDTLHPPLVWERPTKVRLPKLYLK HQMDLVAT LSQLGLQELFQAPDLRGISEQSLVSGVQHSTLELSEVGVE AAAATZIA MSRMSLSSFVNRPFLLFFIFEDTTGLPLFVGSVRNPNPSAPR ELKEQQDS PGNKDFLQSLKGFPRGDKLFGPDLKLVPPMEEDYPQFGSPK </pre>
预测分子量	81 kDa including tags

技术指标

Our **Abpromise guarantee** covers the use of **ab152615** in the following tested applications.

The application notes include recommended starting dilutions; optimal dilutions/concentrations should be determined by the end user.

应用	SDS-PAGE
	Western blot

ELISA

形式 Liquid
补充说明

制备和贮存

稳定性和存储 Shipped on dry ice. Upon delivery aliquot and store at -80°C. Avoid freeze / thaw cycles.
pH: 8.00
Constituents: 0.31% Glutathione, 0.79% Tris HCl

常规信息

功能 Serine protease inhibitor. The major targets of this inhibitor are plasmin and trypsin, but it also inactivates matriptase-3/TMPRSS7 and chymotrypsin.

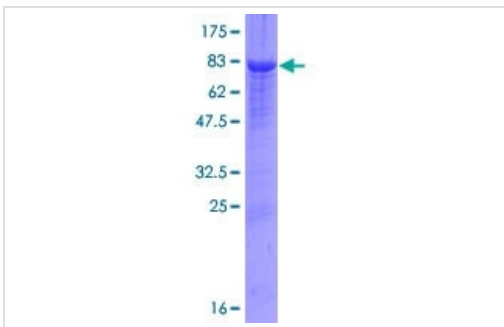
组织特异性 Expressed by the liver and secreted in plasma.

疾病相关 Defects in SERPINF2 are the cause of alpha-2-plasmin inhibitor deficiency (APLID) [MIM:262850]. APLID is an autosomal recessive disorder resulting in severe hemorrhagic diathesis.

序列相似性 Belongs to the serpin family.

细胞定位 Secreted.

图片



12.5% SDS-PAGE analysis of ab152615 stained with Coomassie Blue.

SDS-PAGE - Recombinant Human Alpha 2
Antiplasmin protein (ab152615)

Please note: All products are "FOR RESEARCH USE ONLY. NOT FOR USE IN DIAGNOSTIC PROCEDURES"

Our Abpromise to you: Quality guaranteed and expert technical support

- Replacement or refund for products not performing as stated on the datasheet
- Valid for 12 months from date of delivery

- Response to your inquiry within 24 hours
- We provide support in Chinese, English, French, German, Japanese and Spanish
- Extensive multi-media technical resources to help you
- We investigate all quality concerns to ensure our products perform to the highest standards

If the product does not perform as described on this datasheet, we will offer a refund or replacement. For full details of the Abpromise, please visit <https://www.abcam.cn/abpromise> or contact our technical team.

Terms and conditions

- Guarantee only valid for products bought direct from Abcam or one of our authorized distributors