

# Recombinant human AKT2 protein ab60322

## 5 图像

### 描述

产品名称	重组人AKT2蛋白
纯度	> 90 % SDS-PAGE. Purity: >90% as determined by densitometry. Affinity purified.
表达系统	Baculovirus infected Sf9 cells
蛋白长度	Full length protein
无动物成分	No
性质	Recombinant
种属	Human

### 技术指标

Our **Abpromise guarantee** covers the use of **ab60322** in the following tested applications.

The application notes include recommended starting dilutions; optimal dilutions/concentrations should be determined by the end user.

应用	SDS-PAGE Functional Studies
形式	Liquid
补充说明	<b>ab204851</b> (AKT peptide) can be utilized as a substrate for assessing kinase activity

### 制备和贮存

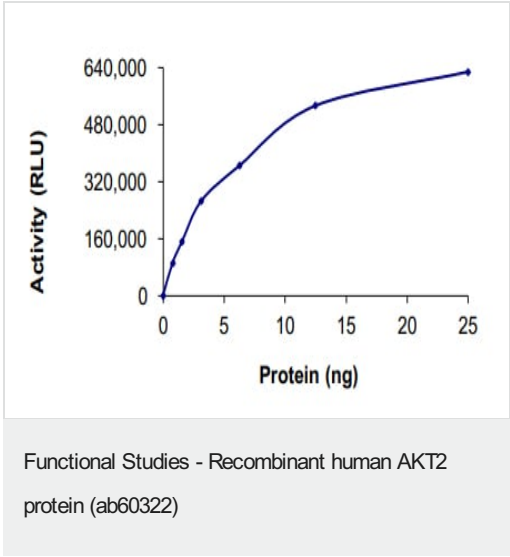
稳定性和存储	Shipped on dry ice. Upon delivery aliquot and store at -80°C. Avoid freeze / thaw cycles. pH: 7.50 Constituents: 0.0038% EGTA, 0.00174% PMSF, 0.00385% DTT, 0.79% Tris HCl, 0.00292% EDTA, 25% Glycerol (glycerin, glycerine), 0.87% Sodium chloride This product is an active protein and may elicit a biological response in vivo, handle with caution.
--------	--

### 常规信息

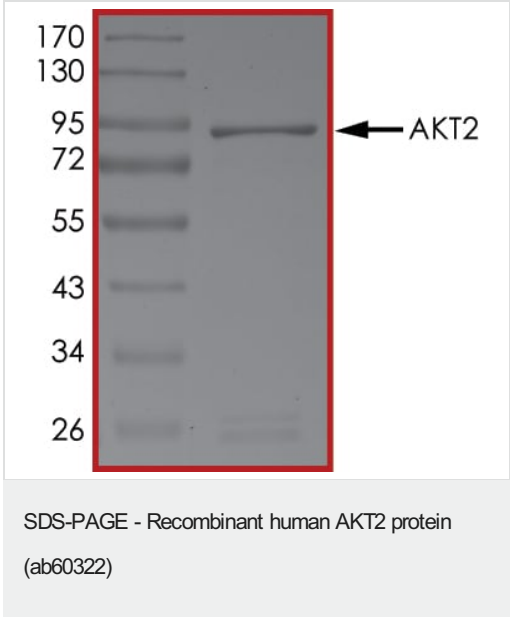
功能	General protein kinase capable of phosphorylating several known proteins.
组织特异性	Expressed in all human cell types so far analyzed.

序列相似性	<p>Belongs to the protein kinase superfamily. AGC Ser/Thr protein kinase family. RAC subfamily.</p> <p>Contains 1 AGC-kinase C-terminal domain.</p> <p>Contains 1 PH domain.</p> <p>Contains 1 protein kinase domain.</p>
翻译后修饰	<p>Phosphorylation on Thr-309 and Ser-474 is required for full activity.</p> <p>Ubiquitinated; undergoes both 'Lys-48'- and 'Lys-63'-linked polyubiquitination. TRAF6-induced 'Lys-63'-linked AKT2 ubiquitination. When fully phosphorylated and translocated into the nucleus, undergoes 'Lys-48'-polyubiquitination catalyzed by TTC3, leading to its degradation by the proteasome.</p>

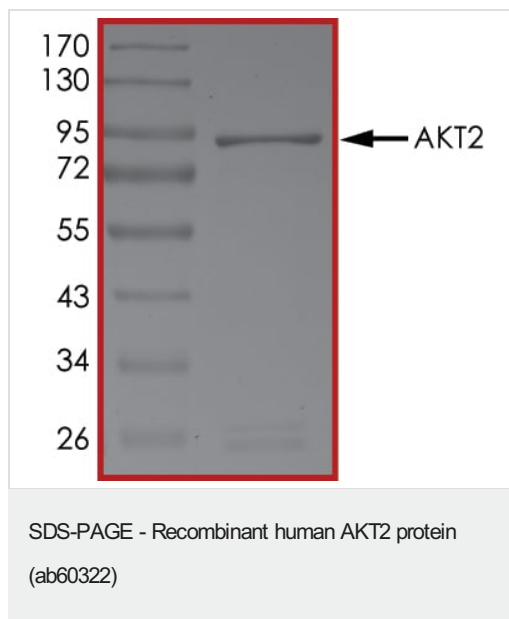
图片



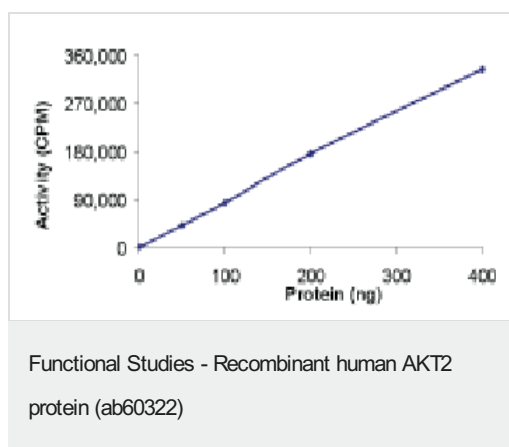
The specific activity of AKT2 (ab60322) was determined to be 80 nmol/min/mg as per activity assay protocol and was equivalent to 52 nmol/min/mg as per radiometric assay



SDS PAGE analysis of ab60322



SDS PAGE analysis of ab60322



Sample Kinase Activity Plot.



ab60322 on SDS-PAGE, MW ~85kDa.

**Please note:** All products are "FOR RESEARCH USE ONLY. NOT FOR USE IN DIAGNOSTIC PROCEDURES"

### Our Abpromise to you: Quality guaranteed and expert technical support

- Replacement or refund for products not performing as stated on the datasheet
- Valid for 12 months from date of delivery

- Response to your inquiry within 24 hours
- We provide support in Chinese, English, French, German, Japanese and Spanish
- Extensive multi-media technical resources to help you
- We investigate all quality concerns to ensure our products perform to the highest standards

If the product does not perform as described on this datasheet, we will offer a refund or replacement. For full details of the Abpromise, please visit <https://www.abcam.cn/abpromise> or contact our technical team.

#### **Terms and conditions**

---

- Guarantee only valid for products bought direct from Abcam or one of our authorized distributors