

Recombinant Human AKR7A2 protein ab93634

★★★★★ [1 Abreviews](#) [1 图像](#)

描述	
产品名称	重组人AKR7A2蛋白
纯度	> 90 % SDS-PAGE. ab93634 is purified using conventional chromatography techniques.
表达系统	Escherichia coli
蛋白长度	Full length protein
无动物成分	No
性质	Recombinant
种属	Human
序列	MRGSHHHHHH GMASMTGGQQ MGRDLYDDDD KDRWGSELEM LSAASRVVSR AAVHCALRSP PPEARALAMS RPPPPRVASV LGTMEMGRRM DAPASAAAVR AFLERGHTEL DTAFMYS DGQ SETILGGLGL GLGGGDCRVK IATKANPWDG KSLKPDSVRS QLETS LKRLQ CPQVDLFY LH APDHGTPVEE TLHACQRLHQ EGKFVELGLS NYASWEVAEI CTLCKSNGWI LPTVYQGMYN ATTRQVETEL FPCLRHFGLR FYAYNPLAGG LLTGKYKYED KDGKQPVGRF FGNSWAET YR NRFWKEHHFE AIALVEKALQ AAYGASAPSV TSAALRW MYH HSQ LQGAHGD AVILGMSSLE QLEQNLAATE EGPLEPAVVD AFNQAWHLVA HECPNYFR

技术指标	
Our Abpromise guarantee covers the use of ab93634 in the following tested applications.	
The application notes include recommended starting dilutions; optimal dilutions/concentrations should be determined by the end user.	
应用	Western blot SDS-PAGE
形式	Liquid

制备和贮存

稳定性和存储

Shipped at 4°C. Store at +4°C short term (1-2 weeks). Upon delivery aliquot. Store at -20°C or -80°C. Avoid freeze / thaw cycle.

pH: 8.00

Constituents: 0.0154% DTT, 0.316% Tris HCl, 20% Glycerol (glycerin, glycerine)

常规信息

功能

Catalyzes the NADPH-dependent reduction of succinic semialdehyde to gamma-hydroxybutyrate. May have an important role in producing the neuromodulator gamma-hydroxybutyrate (GHB). Has broad substrate specificity. Has NADPH-dependent aldehyde reductase activity towards 2-carboxybenzaldehyde, 2-nitrobenzaldehyde and pyridine-2-aldehyde (in vitro). Can reduce 1,2-naphthoquinone and 9,10-phenanthrenequinone (in vitro). Can reduce the dialdehyde protein-binding form of aflatoxin B1 (AFB1) to the non-binding AFB1 dialcohol. May be involved in protection of liver against the toxic and carcinogenic effects of AFB1, a potent hepatocarcinogen.

组织特异性

Detected in brain, liver, small intestine and testis, and at lower levels in heart, prostate, skeletal muscle and spleen. Detected in kidney proximal and distal tubules, endothelial cells lining the Bowman's capsules and some cysts. Detected at low levels in lung and pancreas (at protein level). Widely expressed.

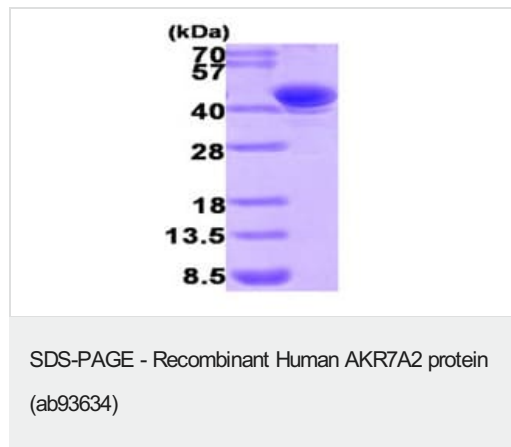
序列相似性

Belongs to the aldo/keto reductase 2 family.

细胞定位

Golgi apparatus. Cytoplasm.

图片



15% SDS-PAGE showing ab93634 at approximately 44kDa (3µg).

Please note: All products are "FOR RESEARCH USE ONLY. NOT FOR USE IN DIAGNOSTIC PROCEDURES"

Our Promise to you: Quality guaranteed and expert technical support

- Replacement or refund for products not performing as stated on the datasheet
- Valid for 12 months from date of delivery
- Response to your inquiry within 24 hours
- We provide support in Chinese, English, French, German, Japanese and Spanish
- Extensive multi-media technical resources to help you

- We investigate all quality concerns to ensure our products perform to the highest standards

If the product does not perform as described on this datasheet, we will offer a refund or replacement. For full details of the Abpromise, please visit <https://www.abcam.cn/abpromise> or contact our technical team.

Terms and conditions

- Guarantee only valid for products bought direct from Abcam or one of our authorized distributors