

Recombinant Human ACAT1 protein ab137175

1 图像

描述	
产品名称	重组人ACAT1蛋白
纯度	> 95 % SDS-PAGE. ab137175 is purified using conventional chromatography techniques.
表达系统	Escherichia coli
Accession	<b><u>P24752</u></b>
蛋白长度	Full length protein
无动物成分	No
性质	Recombinant
种属	Human
序列	MGSSHHHHHH SSGLVPRGSH MGSVSKPTLK EVVIVSATRT PIGSFLGSLS LLPATKLGSI AIQGAIEKAG IPKEEVKEAY MGNVLQGGEG QAPTRQAVLG AGLPISTPCT TINKVCASGM KAIMMASQSL MCGHQDVMVA GGMESMSNVP YVMNRGSTPY GGVKLEDLIV KDGLTDVYNK IHMGS CAENT AKKLNIARNE QDAYAINSYT RSKAAWEAGK FGNEVIPVTV TVKGQPDVVV KEDEEYKRVD FSKVPKLKTV FQKENGTVTA ANASTLNDGA AALVLMTADA AKRLNVTPLA RIVAFADAAV EPIDFPIAPV YAASMVLKDV GLKKEDIAMW EVNEAFSLVV LANIKMLEID PQKVNINGGA VSLGHPIGMS GARIVGHLTH ALKQGEYGLA SICNGGGGAS AMLIQKL
预测分子量	44 kDa including tags
氨基酸	34 to 427
标签	His tag N-Terminus

技术指标

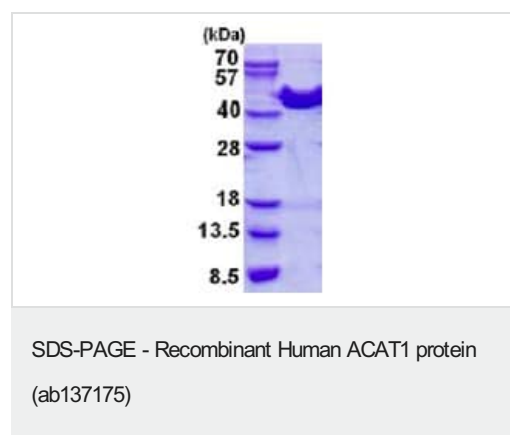
Our **Abpromise guarantee** covers the use of **ab137175** in the following tested applications.

The application notes include recommended starting dilutions; optimal dilutions/concentrations should be determined by the end user.

应用	SDS-PAGE
----	----------

质谱法	Mass Spectrometry
形式	MALDI-TOF
	Liquid
<b>制备和贮存</b>	
稳定性和存储	<p>Shipped at 4°C. Store at +4°C short term (1-2 weeks). Upon delivery aliquot. Store at -20°C or -80°C. Avoid freeze / thaw cycle.</p> <p>pH: 7.50</p> <p>Constituents: 0.02% DTT, 0.32% Tris HCl, 10% Glycerol, 0.58% Sodium chloride</p>
<b>常规信息</b>	
功能	Plays a major role in ketone body metabolism.
疾病相关	Defects in ACAT1 are a cause of 3-ketothiolase deficiency (3KTD) [MIM:203750]; also known as alpha-methylacetoaceticaciduria. 3KTD is an inborn error of isoleucine catabolism characterized by intermittent ketoacidotic attacks associated with unconsciousness. Some patients die during an attack or are mentally retarded. Urinary excretion of 2-methyl-3-hydroxybutyric acid, 2-methylacetoacetic acid, triglylglycine, butanone is increased. It seems likely that the severity of this disease correlates better with the environmental or acquired factors than with the ACAT1 genotype.
序列相似性	Belongs to the thiolase family.
细胞定位	Mitochondrion.

## 图片



15% SDS-PAGE analysis of ab137175 (3µg)

**Please note:** All products are "FOR RESEARCH USE ONLY. NOT FOR USE IN DIAGNOSTIC PROCEDURES"

## Our Abpromise to you: Quality guaranteed and expert technical support

- Replacement or refund for products not performing as stated on the datasheet
- Valid for 12 months from date of delivery

- Response to your inquiry within 24 hours
- We provide support in Chinese, English, French, German, Japanese and Spanish
- Extensive multi-media technical resources to help you
- We investigate all quality concerns to ensure our products perform to the highest standards

If the product does not perform as described on this datasheet, we will offer a refund or replacement. For full details of the Abpromise, please visit <https://www.abcam.cn/abpromise> or contact our technical team.

#### **Terms and conditions**

---

- Guarantee only valid for products bought direct from Abcam or one of our authorized distributors