

Recombinant Human 14-3-3 Theta + Tau protein ab116444

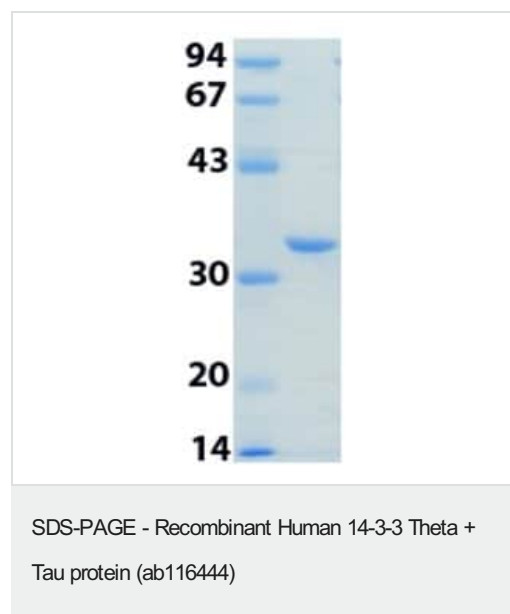
1 图像

描述	
产品名称	重组人14-3-3 Theta + Tau蛋白
纯度	> 80 % Purified via His tag. ab116444 was purified via Ni ²⁺ -NTA agarose columns.
表达系统	Escherichia coli
Accession	<u>P27348</u>
蛋白长度	Full length protein
无动物成分	No
性质	Recombinant
种属	Human
序列	MGSSHHHHHHSSGLVPRGSHMASMTGGQQMGRGSMEKTELIQ KAKLAEQA ERYDDMATCMKAVTEQGAELSNEERNLLSVAYKNVVGRRSA WRVISSIE QKTDTSDDKKLQLIKDYREKVESELRSICTTVLELLDKYLIAN ATNPESKV FYLKMKGDYFRYLAEVACGDDRKQTIDNSQGAYQEAFDISKK EMQPTHPI RLGLALNFSVFYYEILNNPELACTLAKTAFDEAIAELDTLNE DSYKDSTL IMQLLRDNLTLWTSDSAGEECDAAEGAEN
预测分子量	31 kDa including tags
氨基酸	1 to 245
标签	His tag N-Terminus

技术指标	
Our <u>Abpromise guarantee</u> covers the use of ab116444 in the following tested applications.	
The application notes include recommended starting dilutions; optimal dilutions/concentrations should be determined by the end user.	
应用	Mass Spectrometry SDS-PAGE
质谱法	MALDI-TOF-TOF
形式	Liquid

补充说明	ab116444 was alkylated, digested with trypsin and the mass of the resultant peptides determined by MADLI-TOF/TOF mass spectrometry. The peptides obtained gave 64 % sequence coverage of 14-3-3 tau + theta. Theoretical pI: 5.2
制备和贮存	
稳定性和存储	<p>Shipped on dry ice. Upon delivery aliquot and store at -20°C. Avoid freeze / thaw cycles.</p> <p>pH: 7.50</p> <p>Constituents: 0.012% Benzamidine, 0.004% PMSF, 0.02% DTT, 0.6% HEPES, 50% Glycerol</p>
常规信息	
功能	Adapter protein implicated in the regulation of a large spectrum of both general and specialized signaling pathways. Binds to a large number of partners, usually by recognition of a phosphoserine or phosphothreonine motif. Binding generally results in the modulation of the activity of the binding partner.
组织特异性	Abundantly expressed in brain, heart and pancreas, and at lower levels in kidney and placenta. Up-regulated in the lumbar spinal cord from patients with sporadic amyotrophic lateral sclerosis (ALS) compared with controls, with highest levels of expression in individuals with predominant lower motor neuron involvement.
序列相似性	Belongs to the 14-3-3 family.
翻译后修饰	Ser-232 is probably phosphorylated by CK1.
细胞定位	Cytoplasm. In neurons, axonally transported to the nerve terminals.

图片



12% SDS-PAGE gel showing ab116444.

Please note: All products are "FOR RESEARCH USE ONLY. NOT FOR USE IN DIAGNOSTIC PROCEDURES"

Our Abpromise to you: Quality guaranteed and expert technical support

- Replacement or refund for products not performing as stated on the datasheet
- Valid for 12 months from date of delivery
- Response to your inquiry within 24 hours

- We provide support in Chinese, English, French, German, Japanese and Spanish
- Extensive multi-media technical resources to help you
- We investigate all quality concerns to ensure our products perform to the highest standards

If the product does not perform as described on this datasheet, we will offer a refund or replacement. For full details of the Abpromise, please visit <https://www.abcam.cn/abpromise> or contact our technical team.

Terms and conditions

- Guarantee only valid for products bought direct from Abcam or one of our authorized distributors