

Recombinant E. coli surA protein ab99241

1 图像

描述

产品名称	重组E. coli surA蛋白
生物活性	Specific activity is > 800nmol/min/mg, and is defined as the amount of enzyme that cleaves 1nmole of suc-AAPF-pNA per minute at 37C in Tris-HCl pH 8.0 using chymotrypsin.
纯度	> 95 % SDS-PAGE. ab99241 is purified using conventional chromatography techniques.
表达系统	Escherichia coli
Accession	<u>P0ABZ6</u>
蛋白长度	Full length protein
无动物成分	No
性质	Recombinant
种属	Escherichia coli
序列	<pre> MGSSHHHHH SSGLVPRGSH M APQVVDKVA AVVNGVVLE SDVDGLMQSV KLNAAQARQQ LPDDATLRHQ IMERLIMDQI ILQMGQKMGV KISDEQLDQA IANIAKQNNM TLDQMRSRLA YDGLNYNTYR NQIRKEMIIS EVRNNEVRRR ITILPQEVES LAQQVGNQND ASTELNLSHI LIPLPENPTS DQVNEAESQA RAIVDQARNG ADFGKLAIAH SADQQALNGG QMGWGRIQEL PGIFAQALST AKKGDIVGPI RSGVGFHILK VNDLRGESKN ISVTEVHARH ILLKPSPIMT DEQARVKLEQ IAADIKSGKT TFAAAAKEFS QDPGSANQGG DLGWATPDIF DPAFRDALTR LNKGQMSAPV HSSFGWHLIE LLDTRNVDKT DAAQKDRAYR MLMNRKFSEE AASWMQEORA SAYVKILSN </pre>

预测分子量	47 kDa
氨基酸	21 to 428
标签	His tag N-Terminus

技术指标

Our **Abpromise guarantee** covers the use of **ab99241** in the following tested applications.

The application notes include recommended starting dilutions; optimal dilutions/concentrations should be determined by the end user.

应用	SDS-PAGE Mass Spectrometry Functional Studies
质谱法	MALDI-TOF
形式	Liquid

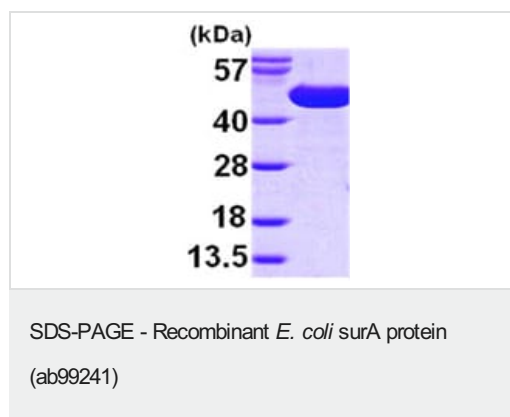
制备和贮存

稳定性和存储	Shipped at 4°C. Upon delivery aliquot and store at -20°C or -80°C. Avoid repeated freeze / thaw cycles. pH: 8.00 Constituents: 0.316% Tris HCl, 10% Glycerol (glycerin, glycerine) This product is an active protein and may elicit a biological response in vivo, handle with caution.
---------------	--

常规信息

相关性	surA is a chaperone involved in the correct folding and assembly of outer membrane proteins, such as ompA, ompF and lamB. It recognizes specific patterns of aromatic residues and the orientation of their side chains, which are found more frequently in integral outer membrane proteins. surA may act in both early periplasmic and late outer membrane-associated steps of protein maturation and is essential for the survival of E.coli in stationary phase.
细胞定位	Periplasm. Note: Is capable of associating with the outer membrane.

图片



15% SDS-PAGE showing ab99241 at approximately 47.3kDa (3µg).

Please note: All products are "FOR RESEARCH USE ONLY. NOT FOR USE IN DIAGNOSTIC PROCEDURES"

Our Abpromise to you: Quality guaranteed and expert technical support

- Replacement or refund for products not performing as stated on the datasheet
- Valid for 12 months from date of delivery

- Response to your inquiry within 24 hours
- We provide support in Chinese, English, French, German, Japanese and Spanish
- Extensive multi-media technical resources to help you
- We investigate all quality concerns to ensure our products perform to the highest standards

If the product does not perform as described on this datasheet, we will offer a refund or replacement. For full details of the Abpromise, please visit <https://www.abcam.cn/abpromise> or contact our technical team.

Terms and conditions

- Guarantee only valid for products bought direct from Abcam or one of our authorized distributors