

## Recombinant E. coli RecQ DNA Helicase protein (Active) ab63813

[3 References](#) [1 图像](#)

### 描述

<b>产品名称</b>	重组E. coli RecQ DNA Helicase蛋白(Active)
<b>生物活性</b>	Unwinding duplex DNA, dependent on ATP. DNA-dependent ATPase.
<b>纯度</b>	> 90 % SDS-PAGE. Highly purified by several steps of chromatography.
<b>表达系统</b>	Escherichia coli
<b>Accession</b>	<b><u>P15043</u></b>
<b>蛋白长度</b>	Full length protein
<b>无动物成分</b>	No
<b>性质</b>	Recombinant
<b>种属</b>	Escherichia coli
<b>序列</b>	<pre> MAQAEVLNLE SGAKQVLQET FGYQQFRPGQ EEIIDTVLSG RDCLVVMPTG GGKSLCYQIP ALLLNGLTVV VSPLISLMKD QVDQLQANGV AAACLNSTQT REQQLEVMTG CRTGQIRLLY IAPERLMLDN FLEHLAHWNP VLLAVDEAHC ISQWGHDFRP EYAALGQLRQ RFPTLPMFAL TATADDTTRQ DIVRLLGLND PLIQISSFDR PNIRYMLMEK FKPLDQLMRY VQEQRGKSGI IYCNSRAKVE DTAARLQSKG ISAAAYHAGL ENNVRAADVQE KFQRDDLQIV VATVAFGMGI NKPNRVFVVH FDIPRNIESY YQETGRAGR GLPAEAMLFY DPADMAWLRR CLEEKPQGQL QDIERHKLNA MGAFAEAQTC RRLVLLNYFG EGRQEPCGNC DICLDPPKQY DGSTDAQIAL STIGRVNQRF GMGYVVEVIR GANNQRIRDY GHDKLVVYGM GRDKSHEHWV SVIRQLIHLG LVTQNIHQHS ALQLTEAARP VLRGESSLQL AVPRIVALKP KAMQKSFSGN YDRKLFKLR KLRKSIADDES NVPPYVVFND ATLIEMAEQM PITASEMLSV NGVGMRKLER FGKPFMALIR AHVDGDDEE           </pre>
<b>预测分子量</b>	68 kDa

**氨基酸** 1 to 609  
**描述** 重组*E. coli* RecQ DNA Helicase蛋白(Active)

### 技术指标

---

Our **Abpromise guarantee** covers the use of **ab63813** in the following tested applications.

The application notes include recommended starting dilutions; optimal dilutions/concentrations should be determined by the end user.

**应用** Functional Studies  
SDS-PAGE

**形式** Liquid

**补充说明** Applications  
1) DNA dependent ATPase.  
2) DNA helicase specific for various form of DNA structure like branched form and fork.

### 制备和贮存

---

**稳定性和存储** Shipped at 4°C. Upon delivery aliquot. Store at -20°C or -80°C. Avoid freeze / thaw cycle.  
pH: 6.00  
Constituents: 0.38% Potassium chloride, 0.0154% (R\*,R\*)-1,4-Dimercaptobutan-2,3-diol, 0.316% Tris HCl, 0.0292% EDTA, 10% Glycerol (glycerin, glycerine)  
This product is an active protein and may elicit a biological response in vivo, handle with caution.

### 常规信息

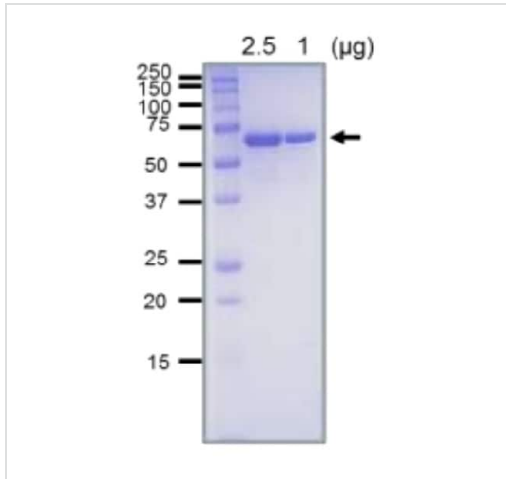
---

**相关性** RecQ is a DNA helicase, involved in the recF recombination pathway; its gene expression is under the regulation of the SOS system.

**细胞定位** Cytoplasmic, Bacterial nucleoid, Replisome

### 图片

---



SDS-PAGE - Recombinant *E. coli* RecQ DNA Helicase protein (ab63813)

SDS-PAGE analysis of Recombinant *E. coli* RecQ DNA Helicase protein (ab63813).

**Please note:** All products are "FOR RESEARCH USE ONLY. NOT FOR USE IN DIAGNOSTIC PROCEDURES"

### Our Abpromise to you: Quality guaranteed and expert technical support

---

- Replacement or refund for products not performing as stated on the datasheet
- Valid for 12 months from date of delivery
- Response to your inquiry within 24 hours
- We provide support in Chinese, English, French, German, Japanese and Spanish
- Extensive multi-media technical resources to help you
- We investigate all quality concerns to ensure our products perform to the highest standards

If the product does not perform as described on this datasheet, we will offer a refund or replacement. For full details of the Abpromise, please visit <https://www.abcam.cn/abpromise> or contact our technical team.

### Terms and conditions

---

- Guarantee only valid for products bought direct from Abcam or one of our authorized distributors