

### Recombinant *E. coli* hchA protein ab106879

#### 1 图像

#### 描述

<b>产品名称</b>	重组 <i>E. coli</i> hchA蛋白	
<b>纯度</b>	> 95 % SDS-PAGE. ab106879 was purified using conventional chromatography techniques.	
<b>表达系统</b>	<i>Escherichia coli</i>	
<b>Accession</b>	<b><u>P31658</u></b>	
<b>蛋白长度</b>	Full length protein	
<b>无动物成分</b>	No	
<b>性质</b>	Recombinant	
<b>种属</b>	<i>Escherichia coli</i>	
<b>序列</b>		<p><b>MGSSHHHHHSSGLVPRGSHMTVQTSKNPQVDIAEDNAFF</b>  <b>PSEYSLSQYT</b>  <b>SPVSDLGDGVDYPKPYRGKHKILVIAADERYLPTDNGKLFSTG</b>  <b>NHPIETLL</b>  <b>PLYHLHAAGFEFEVATISGLMTKFEYWAMPHKDEKVMPFFEQ</b>  <b>HKSLFRNP</b>  <b>KKLADVVASLNADSEYAAIFVPGGHGALIGLPESQDVAAALQ</b>  <b>WAIKDRF</b>  <b>VISLCHGPA AFLALRHGDNPLNGYSICAFDAADKQTPEIGY</b>  <b>MPGHLTWY</b>  <b>FGEELKKGMMNIINDDITGRVHKDRKLLTGDSPFAANALGKL</b>  <b>AAQEMLAA YAG</b></p>
<b>预测分子量</b>	33 kDa including tags	
<b>氨基酸</b>	1 to 283	
<b>标签</b>	His tag N-Terminus	
<b>描述</b>	重组 <i>E. coli</i> hchA蛋白	

#### 技术指标

Our **Abpromise guarantee** covers the use of **ab106879** in the following tested applications.

The application notes include recommended starting dilutions; optimal dilutions/concentrations should be determined by the end user.

<b>应用</b>	SDS-PAGE
	Mass Spectrometry

质谱法	MALDI-TOF
形式	Liquid

### 制备和贮存

#### 稳定性和存储

Shipped at 4°C. Store at +4°C short term (1-2 weeks). Upon delivery aliquot. Store at -20°C or -80°C. Avoid freeze / thaw cycle.

pH: 8.00

Constituents: 0.0154% DTT, 0.316% Tris HCl, 20% Glycerol (glycerin, glycerine), 0.58% Sodium chloride

### 常规信息

#### 功能

Uses temperature-induced exposure of structured hydrophobic domains to capture and stabilize early unfolding protein intermediates under severe thermal stress. It rapidly releases them once stress has abated.

#### 序列相似性

Belongs to the peptidase C56 family. HchA subfamily.

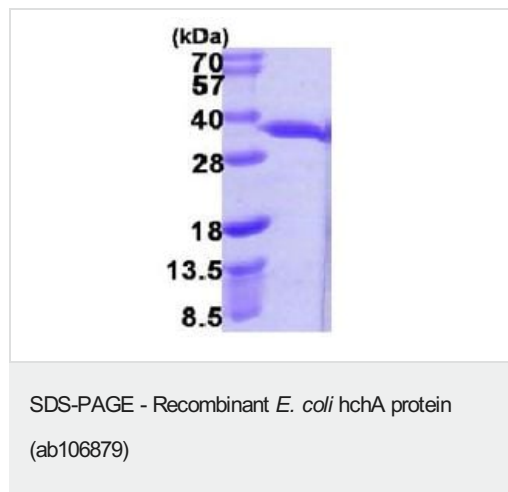
#### 结构域

Consists of a large A domain and a smaller P domain connected by a linker. The thermally induced motion of the flexible linker-loop region leads to the uncovering of a high-affinity substrate-binding site that is essential to capture nonnative proteins at high temperatures.

#### 细胞定位

Cytoplasm.

### 图片



15% SDS-PAGE analysis of 3 µg ab106879.

**Please note:** All products are "FOR RESEARCH USE ONLY. NOT FOR USE IN DIAGNOSTIC PROCEDURES"

### Our Promise to you: Quality guaranteed and expert technical support

- Replacement or refund for products not performing as stated on the datasheet
- Valid for 12 months from date of delivery

- Response to your inquiry within 24 hours
- We provide support in Chinese, English, French, German, Japanese and Spanish
- Extensive multi-media technical resources to help you
- We investigate all quality concerns to ensure our products perform to the highest standards

If the product does not perform as described on this datasheet, we will offer a refund or replacement. For full details of the Abpromise, please visit <https://www.abcam.cn/abpromise> or contact our technical team.

### **Terms and conditions**

---

- Guarantee only valid for products bought direct from Abcam or one of our authorized distributors