

Native human Plasminogen protein (Active) ab92924

2 References 1 图像

描述		
产品名称	Native人Plasminogen蛋白(Active)	
生物活性	No plasmin activity detected with the chromogenic substrate S-2251. >98% conversion to plasmin is observed upon activation with uPA.	
纯度	> 95 % SDS-PAGE.	
表达系统	Native	
Accession	<u>P00747</u>	
蛋白长度	Full length protein	
无动物成分	No	
性质	Native	
种属	Human	
序列	EPLDDYVNTQ GASLFSVTKK QLGAGSIEEC AAKCEEDEEF TCRAFQYHSK EQQCVIMAEN RKSSIIIRMV DVVLFEEKVY LSECKTGNGK NYRGTMSTTK NGITCQKWSS TSPHRPRFSP ATHPSEGLEE NYCRNPNDP QGPWCYTDDP EKRYDYCDIL ECEEECMHCS GENYDGKISK TMSGLECAW DSQSPHAGY IPSKFPNKNL KKNYCRNPDR ELRPWCFTD PNKRWELCDI PRCTTPPPSS GPTYQCLKGT GENYRGNVAV TVSGHTCQHW SAQTPHTHNR TPENFPCKNL DENYCRNPDG KRAPWCHTTN SQVRWEYCKI PSCDSSPVST EQLAPTAPPE LTPVVQDCYH GDGQSYRGTS STTTTGKKCQ SWSSMTPHRH QKTPENYPNA GLTMNYCRNP DADKGPWCFT TDPSVRWEYC NLKKCSGTEA SVVAPPPVVL LPDVETPSEE DCMFGNGKGY RGKRATTVTG TPCQDWAAQE PHRHSIFTPE TNPRAGLEKN YCRNPDGDVG GPWCYTTPNR KLYDYCDVPQ CAAPSFDCGK PQVEPKKCPG RVVGGCVAHP HWPWQVSLR TRFGMHFCGG TLISPEWVLT AAHCLEKSPR PSSYKVLGA HQEVNLEPHV QEIEVSRLFL EPTRKDIALL KLSSPAVITD	

KVIPACLPSP NYVVADRTEC FITGWGETQG
TFGAGLLKEA QLPVIENKVC NRYEFLNGRV
QSTELCAGHL AGGTDSCQGD SGGPLVCFEK
DKYILQGVTS WGLGCARPKN PGVYVRVSRF
VTWIEGVMRN N

预测分子量	92 kDa
氨基酸	20 to 810
额外的序列信息	(Gene ID: 5340) Full length mature protein, without the signal peptide.

技术指标

Our **Abpromise guarantee** covers the use of **ab92924** in the following tested applications.

The application notes include recommended starting dilutions; optimal dilutions/concentrations should be determined by the end user.

应用	SDS-PAGE
形式	Liquid
补充说明	ab92924 is purified from Human plasma that is tested and found negative for all communicable diseases, including HIV1, HIV2, Hepatitis Surface antigen and HCV. Solubility: > 2 mg/mL Extinction coefficient: Epsilon ^{0.1%} = 1.69 Prepared from fresh human plasma by immobilized lysine chromatography. Ultraviolet: Absorbance (280nm) = 16.56

制备和贮存

稳定性和存储	Shipped on dry ice. Upon delivery aliquot and store at -80°C. Avoid freeze / thaw cycles. pH: 7.40 Constituents: 2.38% HEPES, 0.58% Sodium chloride This product is an active protein and may elicit a biological response in vivo, handle with caution.
--------	---

常规信息

功能	Plasmin dissolves the fibrin of blood clots and acts as a proteolytic factor in a variety of other processes including embryonic development, tissue remodeling, tumor invasion, and inflammation. In ovulation, weakens the walls of the Graafian follicle. It activates the urokinase-type plasminogen activator, collagenases and several complement zymogens, such as C1 and C5. Cleavage of fibronectin and laminin leads to cell detachment and apoptosis. Also cleaves fibrin, thrombospondin and von Willebrand factor. Its role in tissue remodeling and tumor invasion may be modulated by CSPG4. Binds to cells. Angiostatin is an angiogenesis inhibitor that blocks neovascularization and growth of experimental primary and metastatic tumors in vivo.
组织特异性	Present in plasma and many other extracellular fluids. It is synthesized in the liver.
疾病相关	Defects in PLG are a cause of susceptibility to thrombosis (THR) [MIM:188050]. It is a multifactorial disorder of hemostasis characterized by abnormal platelet aggregation in response to various agents and recurrent thrombi formation. Defects in PLG are the cause of plasminogen deficiency (PLGD) [MIM:217090]. PLGD is

characterized by decreased serum plasminogen activity. Two forms of the disorder are distinguished: type 1 deficiency is additionally characterized by decreased plasminogen antigen levels and clinical symptoms, whereas type 2 deficiency, also known as dysplasminogenemia, is characterized by normal, or slightly reduced antigen levels, and absence of clinical manifestations. Plasminogen deficiency type 1 results in markedly impaired extracellular fibrinolysis and chronic mucosal pseudomembranous lesions due to subepithelial fibrin deposition and inflammation. The most common clinical manifestation of type 1 deficiency is ligneous conjunctivitis in which pseudomembranes formation on the palpebral surfaces of the eye progresses to white, yellow-white, or red thick masses with a wood-like consistency that replace the normal mucosa.

序列相似性

Belongs to the peptidase S1 family. Plasminogen subfamily.
Contains 5 kringle domains.
Contains 1 PAN domain.
Contains 1 peptidase S1 domain.

结构域

Kringle domains mediate interaction with CSPG4.

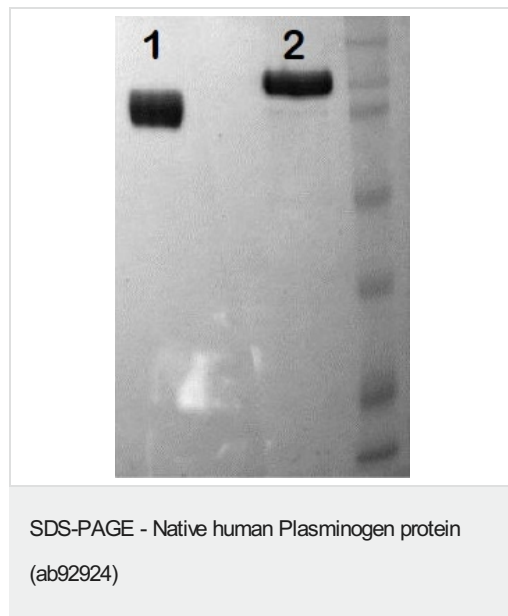
翻译后修饰

N-linked glycan contains N-acetylglucosamine and sialic acid. O-linked glycans consist of Gal-GalNAc disaccharide modified with up to 2 sialic acid residues (microheterogeneity). In the presence of the inhibitor, the activation involves only cleavage after Arg-580, yielding two chains held together by two disulfide bonds. In the absence of the inhibitor, the activation involves additionally the removal of the activation peptide.

细胞定位

Secreted. Locates to the cell surface where it is proteolytically cleaved to produce the active plasmin. Interaction with HRG tethers it to the cell surface.

图片



10% Tris-HCl SDS-PAGE.

Lane 1: 5 ug, non-reduced ab92924.

Lane 2: 5 ug, reduced ab92924.

Please note: All products are "FOR RESEARCH USE ONLY. NOT FOR USE IN DIAGNOSTIC PROCEDURES"

Our Abpromise to you: Quality guaranteed and expert technical support

- Replacement or refund for products not performing as stated on the datasheet
- Valid for 12 months from date of delivery

- Response to your inquiry within 24 hours
- We provide support in Chinese, English, French, German, Japanese and Spanish
- Extensive multi-media technical resources to help you
- We investigate all quality concerns to ensure our products perform to the highest standards

If the product does not perform as described on this datasheet, we will offer a refund or replacement. For full details of the Abpromise, please visit <https://www.abcam.cn/abpromise> or contact our technical team.

Terms and conditions

- Guarantee only valid for products bought direct from Abcam or one of our authorized distributors