

### Native Human IgG3 protein ab118426

**3 References**   [1 图像](#)

#### 描述

产品名称	Native人IgG3蛋白
纯度	> 95 % SDS-PAGE. ab118426 is prepared from plasma shown to be non reactive for HBsAg, anti-HCV, anti-HBc, and negative for anti-HIV 1 & 2 by FDA approved tests.
表达系统	Native
Accession	<b><u>P01860</u></b>
蛋白长度	Full length protein
无动物成分	No
性质	Native
种属	Human
预测分子量	170 kDa

#### 技术指标

Our **Abpromise guarantee** covers the use of **ab118426** in the following tested applications.

The application notes include recommended starting dilutions; optimal dilutions/concentrations should be determined by the end user.

应用	SDS-PAGE
形式	Liquid

#### 制备和贮存

稳定性和存储	Shipped at 4°C. Upon delivery aliquot. Store at +4°C. Do Not Freeze. pH: 7.40 Preservative: 0.05% Sodium azide Constituents: 0.88% Sodium chloride, 0.3% Sodium phosphate monobasic, monohydrate
--------	---

#### 常规信息

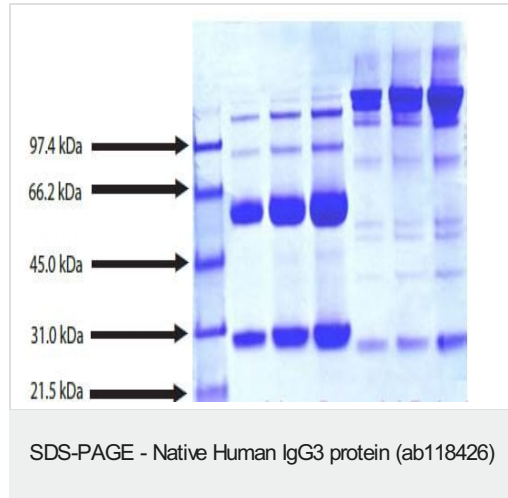
相关性	IgG3, like IgG1, activates complement and has an affinity for fc receptors; thus IgG1 and IgG3 are the more effective of the IgG subclasses. An IgG3 deficiency is associated with Wiscott-Aldrich disease, systemic lupus erythematosus, juvenile diabetes mellitus, and periodontal infections. IgG
-----	---

anti-viral antibodies are restricted to IgG subclasses 1 and 3, with IgG3 antibodies being the first to appear in response to infection.

## 细胞定位

Secreted

## 图片



SDS PAGE analysis of ab118426 under reducing conditions (lanes 2-4) and non-reducing conditions (lanes 5-7) on 4 - 12% Bis-Tris NuPAGE gel.

Lane 1: ladder.

Lane 2: 5 µg (reduced / heated)

Lane 3: 10 µg (reduced / heated)

Lane 4: 20 µg (reduced / heated)

Lane 5: 5 µg (non-reduced / no heat)

Lane 6: 10 µg (non-reduced / no heat)

Lane 7: 20 µg (non-reduced / no heat)

**Please note:** All products are "FOR RESEARCH USE ONLY. NOT FOR USE IN DIAGNOSTIC PROCEDURES"

## Our Abpromise to you: Quality guaranteed and expert technical support

- Replacement or refund for products not performing as stated on the datasheet
- Valid for 12 months from date of delivery
- Response to your inquiry within 24 hours
- We provide support in Chinese, English, French, German, Japanese and Spanish
- Extensive multi-media technical resources to help you
- We investigate all quality concerns to ensure our products perform to the highest standards

If the product does not perform as described on this datasheet, we will offer a refund or replacement. For full details of the Abpromise, please visit <https://www.abcam.cn/abpromise> or contact our technical team.

## Terms and conditions

- Guarantee only valid for products bought direct from Abcam or one of our authorized distributors