

Native Human IgG protein ab91102

8 References [1 图像](#)

描述

产品名称	Native人IgG蛋白
纯度	> 95 % SDS-PAGE.
表达系统	Native
蛋白长度	Full length protein
无动物成分	No
性质	Native
种属	Human
预测分子量	150 kDa

技术指标

Our **Abpromise guarantee** covers the use of **ab91102** in the following tested applications.

The application notes include recommended starting dilutions; optimal dilutions/concentrations should be determined by the end user.

应用	SDS-PAGE
形式	Lyophilized
补充说明	Protein Determination: Extinction Coefficient (E) 0.1% at 280nm, 1cm pathway = 1.36. Prepared from plasma shown to be non reactive for HBsAg, anti-HCV, anti-HBc, and negative for anti-HIV 1 & 2 by FDA approved tests.

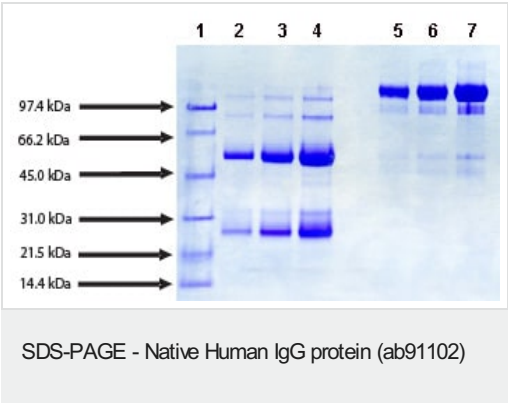
制备和贮存

稳定性和存储	Shipped at 4°C. Store at -20°C. pH: 7.40 Preservative: 0.05% Sodium azide Constituents: 0.87% Sodium chloride, Phosphate Buffer
复溶	Centrifuge briefly the vial prior to opening. Reconstitute with sterile deionized water to a concentration of 47.6 mg/mL, followed by gentle swirling and/or vortexing to ensure adequate homogenization. If further dilution is required, use 20 mM Phosphate buffer, pH 7.4, with 150 mM NaCl and 0.05% sodium azide.

常规信息

细胞定位 Secreted

图片



SDS-PAGE: 4-12% Bis-Tris NuPAGE gel

Lane 1. Molecular weight markers

Lane 2. 5 µg IgG (reduced/heated)

Lane 3. 10 µg IgG (reduced/heated)

Lane 4. 20 µg IgG (reduced/heated)

Lane 5. 5 µg IgG (non-reduced/no heat)

Lane 6. 10 µg IgG non-reduced/no heat)

Lane 7. 20 µg IgG non-reduced/no heat)

Please note: All products are "FOR RESEARCH USE ONLY. NOT FOR USE IN DIAGNOSTIC PROCEDURES"

Our Abpromise to you: Quality guaranteed and expert technical support

- Replacement or refund for products not performing as stated on the datasheet
- Valid for 12 months from date of delivery
- Response to your inquiry within 24 hours
- We provide support in Chinese, English, French, German, Japanese and Spanish
- Extensive multi-media technical resources to help you
- We investigate all quality concerns to ensure our products perform to the highest standards

If the product does not perform as described on this datasheet, we will offer a refund or replacement. For full details of the Abpromise, please visit <https://www.abcam.cn/abpromise> or contact our technical team.

Terms and conditions

- Guarantee only valid for products bought direct from Abcam or one of our authorized distributors