

Native Human IgD protein ab91022

1 图像

描述

产品名称	Native人IgD蛋白
纯度	> 95 % SDS-PAGE.
表达系统	Native
蛋白长度	Full length protein
无动物成分	No
性质	Native
种属	Human
预测分子量	185 kDa

技术指标

Our **Abpromise guarantee** covers the use of **ab91022** in the following tested applications.

The application notes include recommended starting dilutions; optimal dilutions/concentrations should be determined by the end user.

应用	SDS-PAGE
形式	Liquid
补充说明	Protein Determination: Extinction Coefficient (E) 0.1% at 280nm, 1cm pathway = 1.70. Prepared from myeloma plasma shown to be non reactive for HBsAg, anti-HCV, anti-HBc, and negative for anti-HIV 1 & 2 by FDA approved tests.

制备和贮存

稳定性和存储	Shipped on Dry Ice. Upon delivery aliquot. Store at -20°C. Avoid freeze / thaw cycle. pH: 8.00 Preservative: 0.05% Sodium azide Constituents: 0.131% EACA, 0.158% Tris HCl, 0.87% Sodium chloride
--------	------------------------------------------------------------------------------------------------------------------------------------------------------------------------------------------------------------

常规信息

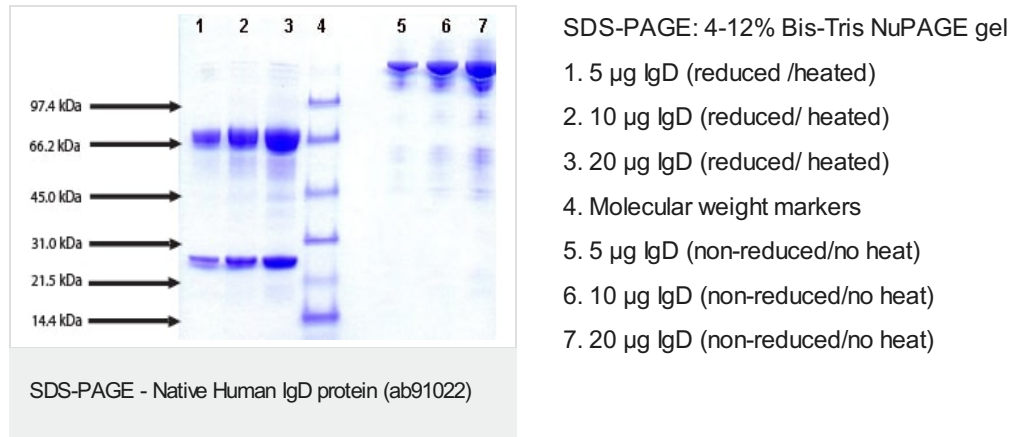
相关性	Little is known about the normal function of IgD, and few clinical signs or symptoms are
-----	------------------------------------------------------------------------------------------

associated with its absence. Individuals with low or absent levels of IgD do not appear unusually predisposed to infections. In mice, IgD may substitute for some functions of IgM when IgM is absent. IgD is expressed on peripheral B cells and is used as a pan B cell marker.

细胞定位

Cytoplasmic

图片



Please note: All products are "FOR RESEARCH USE ONLY. NOT FOR USE IN DIAGNOSTIC PROCEDURES"

Our Abpromise to you: Quality guaranteed and expert technical support

- Replacement or refund for products not performing as stated on the datasheet
- Valid for 12 months from date of delivery
- Response to your inquiry within 24 hours
- We provide support in Chinese, English, French, German, Japanese and Spanish
- Extensive multi-media technical resources to help you
- We investigate all quality concerns to ensure our products perform to the highest standards

If the product does not perform as described on this datasheet, we will offer a refund or replacement. For full details of the Abpromise, please visit <https://www.abcam.cn/abpromise> or contact our technical team.

Terms and conditions

- Guarantee only valid for products bought direct from Abcam or one of our authorized distributors