

Product datasheet

Native Human IgA protein ab91025

[2 References](#) [1 图像](#)

描述

产品名称	Native人IgA蛋白
纯度	> 95 % SDS-PAGE.
表达系统	Native
蛋白长度	Full length protein
无动物成分	No
性质	Native
种属	Human
预测分子量	160 kDa
额外的序列信息	Prepared from plasma.

技术指标

Our [Abpromise guarantee](#) covers the use of **ab91025** in the following tested applications.

The application notes include recommended starting dilutions; optimal dilutions/concentrations should be determined by the end user.

应用	SDS-PAGE
形式	Liquid
补充说明	Protein Determination: Extinction Coefficient (E) 0.1% at 280nm, 1cm pathway = 1.32 Prepared from plasma shown to be non reactive for HBsAg, anti-HCV, anti-HBc, and negative for anti-HIV 1 & 2 by FDA approved tests.

制备和贮存

稳定性和存储	Shipped on Dry Ice. Upon delivery aliquot. Store at -80°C. Avoid freeze / thaw cycle. pH: 8.00 Preservative: 0.05% Sodium azide Constituents: 1.58% Tris HCl, 0.58% Sodium chloride
--------	--

常规信息

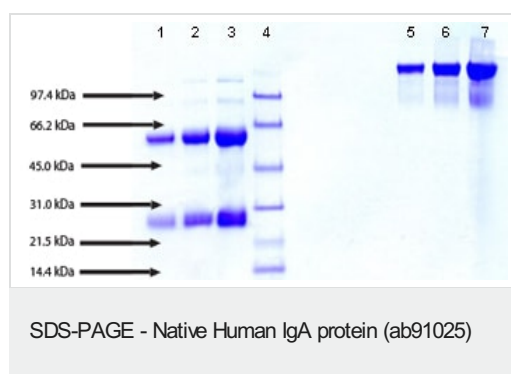
相关性

Human IgA (immunoglobulin A) is a glycosylated protein of 160 kDa and is produced as a monomer or as a J chain linked dimer. Monomeric IgA constitutes 5-15 % of the serum immunoglobulins whereas dimeric IgA is localized to mucosa surfaces such as saliva, gastrointestinal secretion, bronchial fluids and milk. Mucosal IgA plays a major role in host defence by neutralising infectious agents at mucosal surfaces. The production is usually local and antigen specific IgA producing B cells can be found in regions under the lamina propria where they mature into dimeric IgA producing plasma cells. IgA deficiency is the most common immunodeficiency that may affect both serum and mucosal produced IgA. OR: The secretory component is a component of immunoglobulin A (IgA) which consists of a portion of the polymeric immunoglobulin receptor. Polymeric IgA binds to the polymeric immunoglobulin receptor on the basolateral surface of epithelial cells and is taken up into the cell via transcytosis. The receptor-IgA complex passes through the cellular compartments before being secreted on the luminal surface of the epithelial cells, still attached to the receptor. Proteolysis of the receptor occurs and the dimeric IgA molecule, along with the secretory component, are free to diffuse throughout the lumen.

细胞定位

Secreted

图片



SDS-PAGE: 4-12% Bis-Tris NuPAGE gel

Lane 1: 5 µg IgA (reduced/heated)

Lane 2: 10 µg IgA (reduced/heated)

Lane 3: 20 µg IgA (reduced/heated)

Lane 4: Molecular weight markers

Lane 5: 5 µg IgA (non-reduced/no heat)

Lane 6: 10 µg IgA (non-reduced/no heat)

Lane 7: 20 µg IgA (non-reduced/no heat)

Please note: All products are "FOR RESEARCH USE ONLY. NOT FOR USE IN DIAGNOSTIC PROCEDURES"

Our Abpromise to you: Quality guaranteed and expert technical support

- Replacement or refund for products not performing as stated on the datasheet
- Valid for 12 months from date of delivery
- Response to your inquiry within 24 hours
- We provide support in Chinese, English, French, German, Japanese and Spanish
- Extensive multi-media technical resources to help you
- We investigate all quality concerns to ensure our products perform to the highest standards

If the product does not perform as described on this datasheet, we will offer a refund or replacement. For full details of the Abpromise, please visit <https://www.abcam.cn/abpromise> or contact our technical team.

Terms and conditions

- Guarantee only valid for products bought direct from Abcam or one of our authorized distributors