

Native human Cathepsin G protein ab91122

1 References [1 图像](#)

描述

产品名称	Native人Cathepsin G蛋白
生物活性	Activity: 2-4 units per mg protein. One unit is defined as the amount of enzyme that hydrolyzes one μ mole of Suc-Ala-Ala Pro-Phe-pNA (1 mM) per minute at 25°C in 160 mM Tris-HCl, pH 7.4, with 1.6 M NaCl.
纯度	> 95 % SDS-PAGE.
表达系统	Native
蛋白长度	Full length protein
无动物成分	No
性质	Native
种属	Human

技术指标

Our **Abpromise guarantee** covers the use of **ab91122** in the following tested applications.

The application notes include recommended starting dilutions; optimal dilutions/concentrations should be determined by the end user.

应用	Functional Studies SDS-PAGE
形式	Lyophilized
补充说明	Protein Determination: Extinction Coefficient (E) 0.1% at 280nm, 1cm pathway = 0.66. Prepared from whole blood shown to be non reactive for HBsAg, anti-HCV, anti- HBc, and negative for anti-HIV 1 & 2 by FDA approved tests.

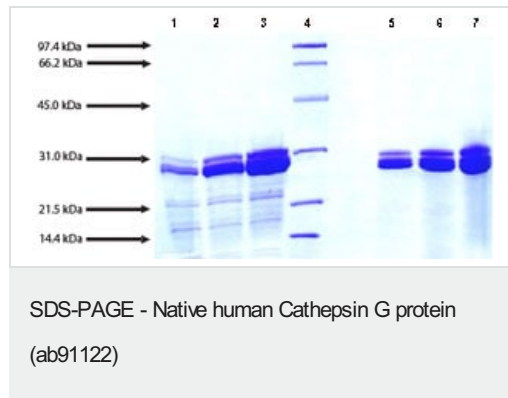
制备和贮存

稳定性和存储	Shipped at 4°C. Store at -20°C. This product is an active protein and may elicit a biological response in vivo, handle with caution.
复溶	Centrifuge the vial prior to opening. Reconstitute in 150 mM sodium acetate (pH 5.5), 150 mM NaCl.

常规信息

功能	Serine protease with trypsin- and chymotrypsin-like specificity. Cleaves complement C3. Has antibacterial activity against the Gram-negative bacterium <i>P.aeruginosa</i> , antibacterial activity is inhibited by LPS from <i>P.aeruginosa</i> , Z-Gly-Leu-Phe-CH ₂ Cl and phenylmethylsulfonyl fluoride.
序列相似性	Belongs to the peptidase S1 family. Contains 1 peptidase S1 domain.
细胞定位	Cell surface.

图片



SDS-PAGE: 12% Tris-HCl gel

Lane 1. 5 µg Cathepsin G (reduced/heated)

Lane 2. 10 µg Cathepsin G (reduced/heated)

Lane 3. 20 µg Cathepsin G (reduced/heated)

Lane 4. Molecular weight markers

Lane 5. 5 µg Cathepsin G (non-reduced/no heat)

Lane 6. 10 µg Cathepsin G (non-reduced/no heat)

Lane 7. 20 µg Cathepsin G (non-reduced/no heat)

Please note: All products are "FOR RESEARCH USE ONLY. NOT FOR USE IN DIAGNOSTIC PROCEDURES"

Our Abpromise to you: Quality guaranteed and expert technical support

- Replacement or refund for products not performing as stated on the datasheet
- Valid for 12 months from date of delivery
- Response to your inquiry within 24 hours
- We provide support in Chinese, English, French, German, Japanese and Spanish
- Extensive multi-media technical resources to help you
- We investigate all quality concerns to ensure our products perform to the highest standards

If the product does not perform as described on this datasheet, we will offer a refund or replacement. For full details of the Abpromise, please visit <https://www.abcam.cn/abpromise> or contact our technical team.

Terms and conditions

- Guarantee only valid for products bought direct from Abcam or one of our authorized distributors