

Native human Cathepsin D protein ab91123

1 References 2 图像

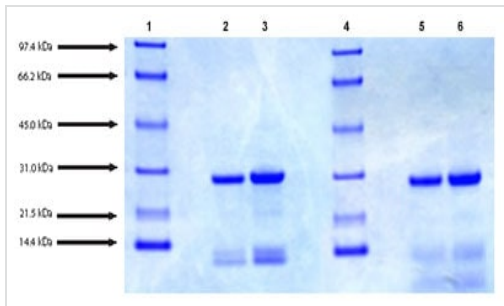
描述	
产品名称	Native人Cathepsin D蛋白
生物活性	Activity: >=300 units per mg protein. One unit is defined as the amount of enzyme that digests hemoglobin-releasing peptides which are soluble in 10% TCA. The reaction is measured by an increase of an A280 of 1.0 per 60 minutes at 37°C . Substrate: acid denatured hemoglobin, pH 1.8 (0.2% in reaction mixture). Buffer: 100 mM formate, pH 3.3.
纯度	> 95 % SDS-PAGE.
表达系统	Native
Accession	<u>P07339</u>
蛋白长度	Full length protein
无动物成分	No
性质	Native
种属	Human
序列	MQPSSLLPLALCLLAAPASALVRIPLHKFTSIRRTMSEVGGS VEDLIAKG PVSQYSQAVPAVTEGPIPEVLKNYMDAQYYGEIGIGTPPQCF TVVFDTG SNLWVPSIHCKLLDIACWIIHHKYNSDKSSTYVKNGTSFDIHY GSGSLSGY LSQDTVSVPCQSASSASALGGVKVERQVFGEATKQPGITFIA AKFDGILG MAYPRISVNNVLPVFDNLMQKQLVDQNIIFSFLSRDPDAQPG GELMLGGT DSKYYKGSLSYLVNTRKAYWQVHLDQVEVASGLTLCKEGCEA IVDTGTSL MVGPDDEVRELQKAIGAVPLIQGEYMIPCEKVSTLPAITLKL GGKGYKLS PEDYTLKVSQAGKTLCLSGFMGMDIPPPSGPLWILGDVFIGR YYTVFDRD NNRVGFAEAARL
预测分子量	42 kDa
额外的序列信息	Source: Human Plasma

Our **Abpromise guarantee** covers the use of **ab91123** in the following tested applications.

The application notes include recommended starting dilutions; optimal dilutions/concentrations should be determined by the end user.

应用	Functional Studies SDS-PAGE Western blot
形式	Lyophilized
补充说明	Lyophilized from 2 mM Na phosphate, pH 6.5. Protein Determination: Extinction Coefficient (E) 0.1% at 280nm, 1cm pathway = 1.0 Prepared from tissue shown to be non reactive for HBsAg, anti-HCV, anti-HBc, and negative for anti-HIV 1 & 2 by FDA approved tests.
制备和贮存	
稳定性和存储	Shipped at 4°C. Store at 4°C prior to reconstitution. Store at -80°C. pH: 6.50 Constituent: 0.0328% Sodium phosphate This product is an active protein and may elicit a biological response in vivo, handle with caution.
复溶	Resuspend a 25ug vial with 71.4uL of deionized H2O to give a protein concentration of 0.350mg/mL, which is the original protein concentration of the lot when it was finished. This should then be aliquotted into suitable amounts in a screw top vial to prevent sublimation and stored at <70 deg C. Aliquots should be diluted to appropriate concentration once thawed. We recommend 2mM NaP pH 6.5 to make dilutions.
常规信息	
功能	Acid protease active in intracellular protein breakdown. Involved in the pathogenesis of several diseases such as breast cancer and possibly Alzheimer disease.
组织特异性	Expressed in the aorta extracellular space (at protein level).
疾病相关	Ceroid lipofuscinosis, neuronal, 10
序列相似性	Belongs to the peptidase A1 family. Contains 1 peptidase A1 domain.
翻译后修饰	N- and O-glycosylated.
细胞定位	Lysosome. Melanosome. Secreted, extracellular space. Identified by mass spectrometry in melanosome fractions from stage I to stage IV. In aortic samples, detected as an extracellular protein loosely bound to the matrix (PubMed:20551380).

图片



SDS-PAGE - Native human Cathepsin D protein
(ab91123)

SDS-PAGE: 4-12% Bis-Tris NuPAGE gel

Lane 1. Molecular weight markers

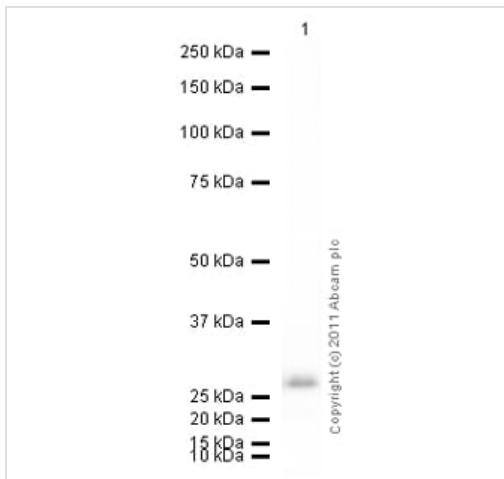
Lane 2. 4 µg Cathepsin D (non-reduced/no heat)

Lane 3. 7 µg Cathepsin D (non-reduced/no heat)

Lane 4. Molecular weight markers

Lane 5. 4 µg Cathepsin D (reduced/heated)

Lane 6. 7 µg Cathepsin D (reduced/heated)



Western blot - Native human Cathepsin D protein
(ab91123)

Anti-Cathepsin D antibody [4G2] ([ab40697](#)) at 1/500 dilution +
Native human Cathepsin D protein (ab91123) at 0.1 µg

Secondary

Goat Anti-Mouse IgG H&L (HRP) preadsorbed ([ab97040](#)) at
1/5000 dilution

Developed using the ECL technique.

Performed under reducing conditions.

Exposure time: 30 seconds

Please note: All products are "FOR RESEARCH USE ONLY. NOT FOR USE IN DIAGNOSTIC PROCEDURES"

Our Abpromise to you: Quality guaranteed and expert technical support

- Replacement or refund for products not performing as stated on the datasheet
- Valid for 12 months from date of delivery
- Response to your inquiry within 24 hours
- We provide support in Chinese, English, French, German, Japanese and Spanish
- Extensive multi-media technical resources to help you
- We investigate all quality concerns to ensure our products perform to the highest standards

If the product does not perform as described on this datasheet, we will offer a refund or replacement. For full details of the Abpromise, please visit <https://www.abcam.cn/abpromise> or contact our technical team.

Terms and conditions

- Guarantee only valid for products bought direct from Abcam or one of our authorized distributors