

Native human Catalase protein ab91026

[1 References](#) [2 图像](#)

描述

产品名称	Native人Catalase蛋白
生物活性	Activity: Greater than 50,000 units per mg protein. One unit is equal to the amount of enzyme that will decompose one micromole of hydrogen peroxide per minute at 25°C, pH 7.0
纯度	> 95 % SDS-PAGE.
表达系统	Native
蛋白长度	Full length protein
无动物成分	No
性质	Native
种属	Human
预测分子量	230 kDa
额外的序列信息	Purified from Human Erythrocytes. Four identical subunits each with a molecular weight of 58,000.

技术指标

Our **Abpromise guarantee** covers the use of **ab91026** in the following tested applications.

The application notes include recommended starting dilutions; optimal dilutions/concentrations should be determined by the end user.

应用	Western blot Functional Studies SDS-PAGE
形式	Liquid
补充说明	Prepared from whole blood shown to be non reactive for HBsAg, anti-HCV, anti-HBc, and negative for anti-HIV 1 & 2 by FDA approved tests.

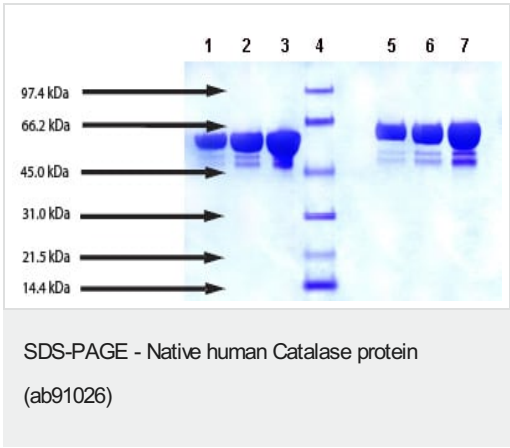
制备和贮存

稳定性和存储	Shipped on dry ice. Upon delivery aliquot and store at -80°C. Avoid freeze / thaw cycles. pH: 8.00 Constituent: 0.79% Tris HCl This product is an active protein and may elicit a biological response in vivo, handle with caution.
--------	--

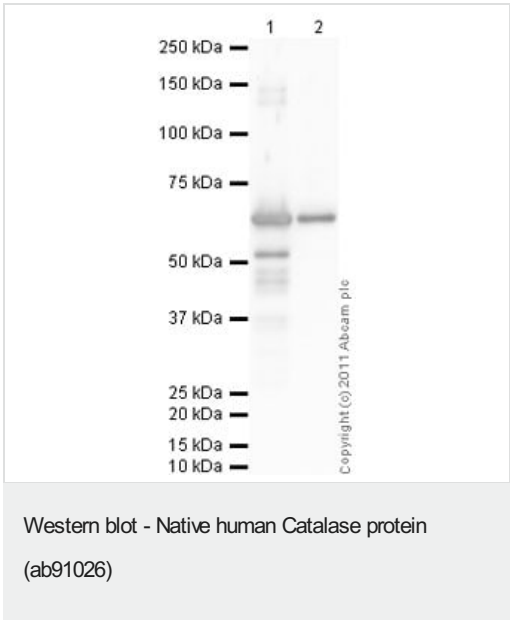
常规信息

功能	Occurs in almost all aerobically respiring organisms and serves to protect cells from the toxic effects of hydrogen peroxide. Promotes growth of cells including T-cells, B-cells, myeloid leukemia cells, melanoma cells, mastocytoma cells and normal and transformed fibroblast cells.
疾病相关	Defects in CAT are the cause of acatalasia (ACATLAS) [MIM:115500]; also known as acatalasemia. This disease is characterized by absence of catalase activity in red cells and is often associated with ulcerating oral lesions.
序列相似性	Belongs to the catalase family.
翻译后修饰	The N-terminus is blocked.
细胞定位	Peroxisome.

图片



SDS-PAGE: 4-12% Bis-Tris NuPAGE gel
Lane 1: 5 µg Catalase (reduced/heated)
Lane 2: 10 µg Catalase (reduced/heated)
Lane 3: 20 µg Catalase (reduced/heated)
Lane 4: Molecular weight markers
Lane 5: 5 µg Catalase (non-reduced/no heat)
Lane 6: 10 µg Catalase (non-reduced/no heat)
Lane 7: 20 µg Catalase (non-reduced/no heat)



All lanes : Anti-Catalase antibody - Peroxisome Marker (**ab15834**) at 5 µg/ml

Lane 1 : Native human Catalase protein (ab91026) at 0.1 µg
Lane 2 : Native human Catalase protein (ab91026) at 0.01 µg

Secondary

All lanes : Goat Anti-Rabbit IgG H&L (HRP) preadsorbed (**ab97080**) at 1/5000 dilution

Developed using the ECL technique.

Performed under reducing conditions.

Exposure time: 10 seconds

Please note: All products are "FOR RESEARCH USE ONLY. NOT FOR USE IN DIAGNOSTIC PROCEDURES"

Our Abpromise to you: Quality guaranteed and expert technical support

- Replacement or refund for products not performing as stated on the datasheet
- Valid for 12 months from date of delivery
- Response to your inquiry within 24 hours

- We provide support in Chinese, English, French, German, Japanese and Spanish
- Extensive multi-media technical resources to help you
- We investigate all quality concerns to ensure our products perform to the highest standards

If the product does not perform as described on this datasheet, we will offer a refund or replacement. For full details of the Abpromise, please visit <https://www.abcam.cn/abpromise> or contact our technical team.

Terms and conditions

- Guarantee only valid for products bought direct from Abcam or one of our authorized distributors