

Human beta Actin peptide ab13772

★★★★★ [1 Abreviews](#) [6 References](#) [1 图像](#)

描述

产品名称	人beta Actin多肽
纯度	> 90 % HPLC.
Accession	P60709
无动物成分	No
性质	Synthetic
种属	Human

技术指标

Our [Abpromise guarantee](#) covers the use of **ab13772** in the following tested applications.

The application notes include recommended starting dilutions; optimal dilutions/concentrations should be determined by the end user.

应用	Blocking - Blocking peptide for Anti-beta Actin antibody [mAbcam 8224] - Loading Control (ab8224), Anti-beta Actin antibody [mAbcam 8226] - Loading Control (ab8226), Anti-beta Actin antibody (ab8227)
形式	Lyophilized
补充说明	<ul style="list-style-type: none"> - First try to dissolve a small amount of peptide in either water or buffer. The more charged residues on a peptide, the more soluble it is in aqueous solutions. - If the peptide doesn't dissolve try an organic solvent e.g. DMSO, then dilute using water or buffer. - Consider that any solvent used must be compatible with your assay. If a peptide does not dissolve and you need to recover it, lyophilise to remove the solvent. - Gentle warming and sonication can effectively aid peptide solubilisation. If the solution is cloudy or has gelled the peptide may be in suspension rather than solubilised. - Peptides containing cysteine are easily oxidised, so should be prepared in solution just prior to use.

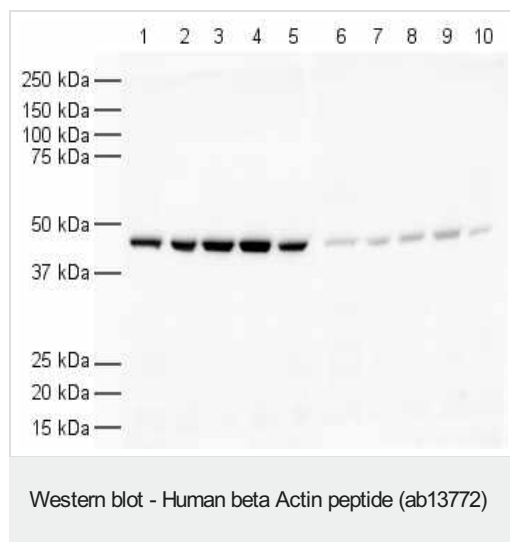
制备和贮存

稳定性和存储	Shipped at 4°C. Store at -20°C. Information available upon request.
--------	--

常规信息

功能	Actins are highly conserved proteins that are involved in various types of cell motility and are ubiquitously expressed in all eukaryotic cells.
疾病相关	Defects in ACTB are a cause of dystonia juvenile-onset (DYTJ) [MIM:607371]. DYTJ is a form of dystonia with juvenile onset. Dystonia is defined by the presence of sustained involuntary muscle contraction, often leading to abnormal postures. DYTJ patients manifest progressive, generalized, dopa-unresponsive dystonia, developmental malformations and sensory hearing loss.
序列相似性	Belongs to the actin family.
翻译后修饰	ISGylated.
细胞定位	Cytoplasm > cytoskeleton. Localized in cytoplasmic mRNP granules containing untranslated mRNAs.

图片



All lanes : Anti-beta Actin antibody ([ab8227](#)) at 1/1000 dilution

Lane 1 : HeLa nuclear lysate

Lane 2 : HeLa whole cell lysate

Lane 3 : A431 cell lysate

Lane 4 : Jurkat cell lysate

Lane 5 : HEK 293 cell lysate

Lane 6 : HeLa nuclear lysate with Human beta Actin peptide (ab13772) at 1 µg/ml

Lane 7 : HeLa whole cell lysate with Human beta Actin peptide (ab13772) at 1 µg/ml

Lane 8 : A431 cell lysate with Human beta Actin peptide (ab13772) at 1 µg/ml

Lane 9 : Jurkate cell lysate with Human beta Actin peptide (ab13772) at 1 µg/ml

Lane 10 : HEK 293 cell lysate with Human beta Actin peptide (ab13772) at 1 µg/ml

Lysates/proteins at 20 µg per lane.

Secondary

All lanes : Goat Anti-Rabbit IgG H&L (HRP) ([ab6721](#)) at 1/5000 dilution

Exposure time: 5 seconds

Please note: All products are "FOR RESEARCH USE ONLY. NOT FOR USE IN DIAGNOSTIC PROCEDURES"

Our Abpromise to you: Quality guaranteed and expert technical support

- Replacement or refund for products not performing as stated on the datasheet
- Valid for 12 months from date of delivery
- Response to your inquiry within 24 hours
- We provide support in Chinese, English, French, German, Japanese and Spanish
- Extensive multi-media technical resources to help you
- We investigate all quality concerns to ensure our products perform to the highest standards

If the product does not perform as described on this datasheet, we will offer a refund or replacement. For full details of the Abpromise, please visit <https://www.abcam.cn/abpromise> or contact our technical team.

Terms and conditions

- Guarantee only valid for products bought direct from Abcam or one of our authorized distributors