

Anti-ZWINT antibody ab71982

2 References **3 图像**

概述

产品名称	Anti-ZWINT抗体
描述	兔多克隆抗体to ZWINT
宿主	Rabbit
经测试应用	适用于: ICC/IF, WB, IP
种属反应性	与反应: Human
免疫原	Synthetic peptide corresponding to a region between residue 225 and the C terminus (residue 277) of human ZWINT (NP_008988.2).
阳性对照	HeLa and 293T whole cell lysates.
常规说明	<p>The Life Science industry has been in the grips of a reproducibility crisis for a number of years. Abcam is leading the way in addressing this with our range of recombinant monoclonal antibodies and knockout edited cell lines for gold-standard validation. Please check that this product meets your needs before purchasing.</p> <p>If you have any questions, special requirements or concerns, please send us an inquiry and/or contact our Support team ahead of purchase. Recommended alternatives for this product can be found below, along with publications, customer reviews and Q&As</p>

性能

形式	Liquid
存放说明	Shipped at 4°C. Upon delivery aliquot and store at -20°C. Avoid freeze / thaw cycles.
存储溶液	<p>pH: 6.8</p> <p>Preservative: 0.09% Sodium azide</p> <p>Constituents: 0.1% BSA, Tris buffered saline</p>
纯度	Immunogen affinity purified
纯化说明	ab71982 was affinity purified using an epitope specific to ZWINT immobilized on solid support.
克隆	多克隆
同种型	IgG

应用

The Abpromise guarantee Abpromise™承诺保证使用ab71982于以下的经测试应用

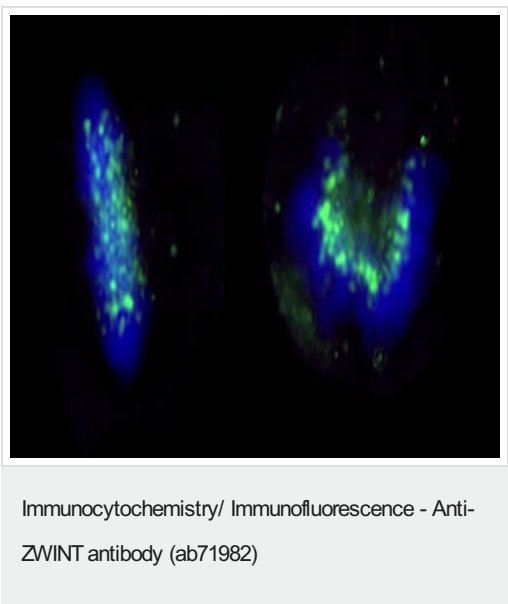
“应用说明”部分 下显示的仅为推荐的起始稀释度;实际最佳的稀释度/浓度应由使用者检定。

应用	Ab评论	说明
ICC/IF		1/50 - 1/250. Formaldehyde fixation is recommended. Permeabilization with Triton-X 100 is recommended for formaldehyde-fixed cells.
WB		1/2000 - 1/10000. Detects a band of approximately 38 kDa (predicted molecular weight: 31 kDa).
IP		Use at 2-5 µg/mg of lysate.

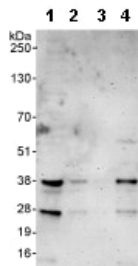
靶标

功能	Part of the MIS12 complex, which is required for kinetochore formation and spindle checkpoint activity. Required to target ZW10 to the kinetochore at prometaphase.
细胞定位	Nucleus. Chromosome > centromere > kinetochore. Localizes to kinetochores from late prophase to anaphase.

图片



Immunocytochemistry/Immunofluorescence analysis of formaldehyde-fixed HeLa cells labelling ZWINT with ab71982 at 1/200 (1µg/ml). A FITC-conjugated goat anti-rabbit IgG (1/100) was used as the secondary antibody.



Western blot - Anti-ZWINT antibody (ab71982)

All lanes : Anti-ZWINT antibody (ab71982) at 0.04 µg

Lane 1 : HeLa whole cell lysate at 50 µg

Lane 2 : HeLa whole cell lysate at 15 µg

Lane 3 : HeLa whole cell lysate at 5 µg

Lane 4 : 293T whole cell lysate at 50 µg

Developed using the ECL technique.

Predicted band size: 31 kDa

Observed band size: 38 kDa

Additional bands at: 28 kDa. We are unsure as to the identity of these extra bands.

Exposure time: 3 minutes



Immunoprecipitation - Anti-ZWINT antibody (ab71982)

Detection of ZWINT by Western Blot of Immunoprecipitate.

ab71982 at 1 µg/ml staining ZWINT in HeLa whole cell lysate

immunoprecipitated using ab71982 at 3 µg/mg lysate (1 mg/IP; 20% of IP loaded/lane).

Detection: Chemiluminescence with exposure time of 30 seconds.

Please note: All products are "FOR RESEARCH USE ONLY. NOT FOR USE IN DIAGNOSTIC PROCEDURES"

Our Abpromise to you: Quality guaranteed and expert technical support

- Replacement or refund for products not performing as stated on the datasheet
- Valid for 12 months from date of delivery
- Response to your inquiry within 24 hours
- We provide support in Chinese, English, French, German, Japanese and Spanish
- Extensive multi-media technical resources to help you
- We investigate all quality concerns to ensure our products perform to the highest standards

If the product does not perform as described on this datasheet, we will offer a refund or replacement. For full details of the Abpromise, please visit <https://www.abcam.cn/abpromise> or contact our technical team.

Terms and conditions

- Guarantee only valid for products bought direct from Abcam or one of our authorized distributors