

Anti-ZP3 antibody ab70384

[1 References](#) [1 图像](#)

概述

产品名称	Anti-ZP3抗体
描述	兔多克隆抗体to ZP3
宿主	Rabbit
经测试应用	适用于: WB
种属反应性	与反应: Human
免疫原	Synthetic peptide corresponding to Human ZP3 aa 400 to the C-terminus (C terminal) conjugated to keyhole limpet haemocyanin. (Peptide available as ab87447)
阳性对照	This antibody gave a positive signal in JEG-3 Whole Cell Lysate
常规说明	<p>The Life Science industry has been in the grips of a reproducibility crisis for a number of years. Abcam is leading the way in addressing this with our range of recombinant monoclonal antibodies and knockout edited cell lines for gold-standard validation. Please check that this product meets your needs before purchasing.</p> <p>If you have any questions, special requirements or concerns, please send us an inquiry and/or contact our Support team ahead of purchase. Recommended alternatives for this product can be found below, along with publications, customer reviews and Q&As</p>

性能

形式	Liquid
存放说明	Shipped at 4°C. Store at +4°C short term (1-2 weeks). Upon delivery aliquot. Store at -20°C or -80°C. Avoid freeze / thaw cycle.
存储溶液	pH: 7.40 Preservative: 0.02% Sodium azide Constituent: PBS
纯度	Batches of this product that have a concentration < 1mg/ml may have BSA added as a stabilising agent. If you would like information about the formulation of a specific lot, please contact our scientific support team who will be happy to help.
克隆	Immunogen affinity purified 多克隆

同种型

IgG

应用

The Abpromise guarantee **Abpromise™** 承诺保证使用 ab70384 于以下的经测试应用

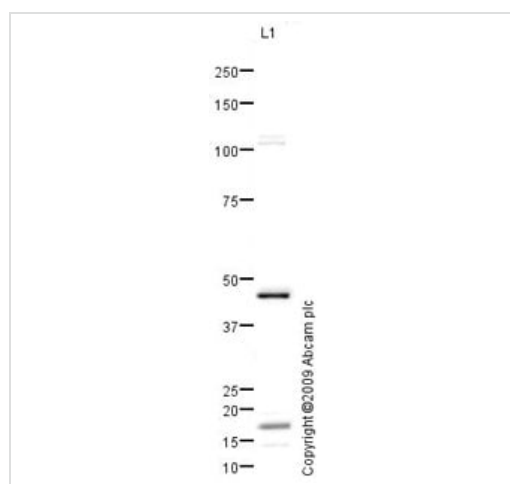
“应用说明”部分 下显示的仅为推荐的起始稀释度;实际最佳的稀释度/浓度应由使用者检定。

应用	Ab评论	说明
WB		Use a concentration of 1 µg/ml. Detects a band of approximately 47 kDa (predicted molecular weight: 47 kDa).

靶标

功能	The mammalian zona pellucida, which mediates species-specific sperm binding, induction of the acrosome reaction and prevents post-fertilization polyspermy, is composed of three to four glycoproteins, ZP1, ZP2, ZP3, and ZP4. ZP3 is essential for sperm binding and zona matrix formation.
组织特异性	Oocytes.
序列相似性	Belongs to the ZP domain family. ZPC subfamily. Contains 1 ZP domain.
结构域	The ZP domain is involved in the polymerization of the ZP proteins to form the zona pellucida.
翻译后修饰	Proteolytically cleaved before the transmembrane segment to yield the secreted ectodomain incorporated in the zona pellucida. N-glycosylated. O-glycosylated; removal of O-linked glycans may play an important role in the post-fertilization block to polyspermy.
细胞定位	Secreted > extracellular space > extracellular matrix and Cell membrane.

图片



Western blot - Anti-ZP3 antibody (ab70384)

Anti-ZP3 antibody (ab70384) at 1 µg/ml + JEG-3 (Human placental choriocarcinoma cell line) Whole Cell Lysate at 10 µg

Secondary

Goat polyclonal to Rabbit IgG - H&L - Pre-Adsorbed (HRP) at 1/3000 dilution

Developed using the ECL technique.

Performed under reducing conditions.

Predicted band size: 47 kDa

Observed band size: 47 kDa

Additional bands at: 17 kDa (possible cleavage fragment)

Please note: All products are "FOR RESEARCH USE ONLY. NOT FOR USE IN DIAGNOSTIC PROCEDURES"

Our Abpromise to you: Quality guaranteed and expert technical support

- Replacement or refund for products not performing as stated on the datasheet
- Valid for 12 months from date of delivery
- Response to your inquiry within 24 hours

- We provide support in Chinese, English, French, German, Japanese and Spanish
- Extensive multi-media technical resources to help you
- We investigate all quality concerns to ensure our products perform to the highest standards

If the product does not perform as described on this datasheet, we will offer a refund or replacement. For full details of the Abpromise, please visit <https://www.abcam.cn/abpromise> or contact our technical team.

Terms and conditions

- Guarantee only valid for products bought direct from Abcam or one of our authorized distributors