

### Anti-ZNF750 antibody ab121730

#### 1 图像

#### 概述

|       |   |
|-------|---|
| 产品名称  | Anti-ZNF750抗体   |
| 描述    | 兔多克隆抗体to ZNF750   |
| 宿主    | Rabbit  |
| 经测试应用 | 适用于: IHC-P  |
| 种属反应性 | 与反应: Human  |
| 免疫原   | antigen sequence, corresponding to amino acids 73-187 of Human ZNF750.  |
| 阳性对照  | Human stomach tissue.   |
| 常规说明  | <p>The Life Science industry has been in the grips of a reproducibility crisis for a number of years. Abcam is leading the way in addressing this with our range of recombinant monoclonal antibodies and knockout edited cell lines for gold-standard validation. Please check that this product meets your needs before purchasing.</p> <p>If you have any questions, special requirements or concerns, please send us an inquiry and/or contact our Support team ahead of purchase. Recommended alternatives for this product can be found below, along with publications, customer reviews and Q&amp;As</p> |

#### 性能

|      |   |
|------|---|
| 形式   | Liquid  |
| 存放说明 | Shipped at 4°C. Upon delivery aliquot and store at -20°C. Avoid freeze / thaw cycles.                     |
| 存储溶液 | pH: 7.20<br>Preservative: 0.02% Sodium azide<br>Constituents: 40% Glycerol (glycerin, glycerine), 59% PBS |
| 纯度   | Immunogen affinity purified   |
| 克隆   | 多克隆   |
| 同种型  | IgG   |

#### 应用

**The Abpromise guarantee**      **Abpromise™**承诺保证使用ab121730于以下的经测试应用

“应用说明”部分 下显示的仅为推荐的起始稀释度;实际最佳的稀释度/浓度应由使用者检定。

| 应用    | Ab评论 | 说明  |
|-------|------|---|
| IHC-P |      | 1/200 - 1/500. Perform heat mediated antigen retrieval with citrate buffer pH 6 before commencing with IHC staining protocol. Perform Heat Induced Epitope Retrieval (HIER) at pH 6 using a pressure boiler as heat source. |

## 靶标

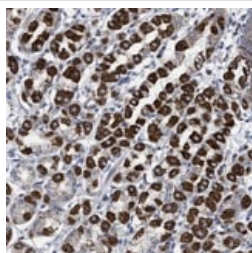
### 组织特异性

Expressed in the skin, prostate, lung, placenta and thymus, and at low level in T-cells. Not expressed in peripheral blood leukocytes, pancreas and brain. Clearly expressed in primary keratinocytes but not in fibroblasts.

### 疾病相关

Defects in ZNF750 are the cause of Seborrhea-like dermatitis with psoriasiform (SLDP) [MIM:610227]. SLDP is characterized by a chronic fine diffuse scaly erythematous rash on the face, particularly on the chin, nasolabial folds and eyebrows, around earlobes and over the scalp. The rash exacerbate in the winter, with emotional stress and after strenuous physical activity. Hyperkeratosis of skin over the elbows, knees, palms, soles and metacarpophalangeal joints is evident. There is no arthralgia, arthritis or neurological disorders.

## 图片



ab121730 at 1/125 dilution staining ZNF750 in Paraffin-embedded Human Stomach tissue by Immunohistochemistry. Note: strong cytoplasmic positivity in parietal cells.

Immunohistochemistry (Formalin/PFA-fixed paraffin-embedded sections) - Anti-ZNF750 antibody (ab121730)

**Please note:** All products are "FOR RESEARCH USE ONLY. NOT FOR USE IN DIAGNOSTIC PROCEDURES"

## Our Abpromise to you: Quality guaranteed and expert technical support

- Replacement or refund for products not performing as stated on the datasheet
- Valid for 12 months from date of delivery
- Response to your inquiry within 24 hours
- We provide support in Chinese, English, French, German, Japanese and Spanish
- Extensive multi-media technical resources to help you
- We investigate all quality concerns to ensure our products perform to the highest standards

If the product does not perform as described on this datasheet, we will offer a refund or replacement. For full details of the Abpromise, please visit <https://www.abcam.cn/abpromise> or contact our technical team.

### **Terms and conditions**

---

- Guarantee only valid for products bought direct from Abcam or one of our authorized distributors