


Anti-ZMYM3 antibody ab84507

1 References **3 图像**

概述

产品名称	Anti-ZMYM3抗体
描述	兔多克隆抗体to ZMYM3
宿主	Rabbit
经测试应用	适用于: IHC-P
种属反应性	与反应: Mouse, Human 预测可用于: Rat, Rabbit, Horse, Guinea pig, Cow, Dog, Chimpanzee, Ferret, Rhesus monkey, Gorilla, Orangutan 
免疫原	Synthetic peptide corresponding to a region between residues 250 and 300 of Human ZFP261 (NP_005087.1)
阳性对照	Human breast adenocarcinoma, Human ovarian carcinoma, Mouse teratoma.
常规说明	<p>The Life Science industry has been in the grips of a reproducibility crisis for a number of years. Abcam is leading the way in addressing this with our range of recombinant monoclonal antibodies and knockout edited cell lines for gold-standard validation. Please check that this product meets your needs before purchasing.</p> <p>If you have any questions, special requirements or concerns, please send us an inquiry and/or contact our Support team ahead of purchase. Recommended alternatives for this product can be found below, along with publications, customer reviews and Q&As</p>

性能

形式	Liquid
存放说明	Shipped at 4°C. Upon delivery aliquot and store at -20°C. Avoid freeze / thaw cycles.
存储溶液	<p>pH: 6.8</p> <p>Preservative: 0.09% Sodium azide</p> <p>Constituents: 0.1% BSA, Tris buffered saline</p>
纯度	Immunogen affinity purified
克隆	多克隆
同种型	IgG

应用

The Abpromise guarantee

Abpromise™ 承诺保证使用ab84507于以下的经测试应用

“应用说明”部分 下显示的仅为推荐的起始稀释度;实际最佳的稀释度/浓度应由使用者检定。

应用	Ab评论	说明
IHC-P		

应用说明

IHC-P: 1/100 - 1/500.
Epitope exposure is recommended.
Epitope exposure with citrate buffer will enhance staining.

Not yet tested in other applications.
Optimal dilutions/concentrations should be determined by the end user.

靶标

组织特异性

Most abundant in brain, moderate in muscle and heart, low in other tissues except placenta.

疾病相关

Note=A chromosomal aberration involving ZMYM3 may be a cause of X-linked mental retardation in Xq13.1. Translocation t(X;13)(q13.1;?).

序列相似性

Contains 9 MYM-type zinc fingers.

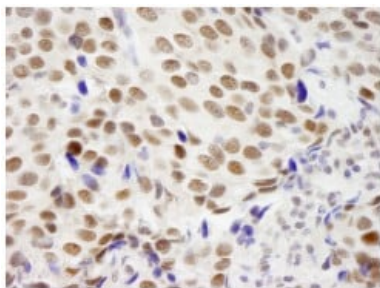
细胞定位

Nucleus.

形式

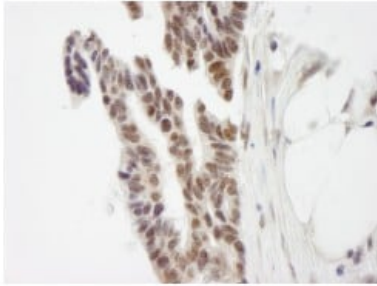
There are 2 isoforms produced by alternative splicing.

图片



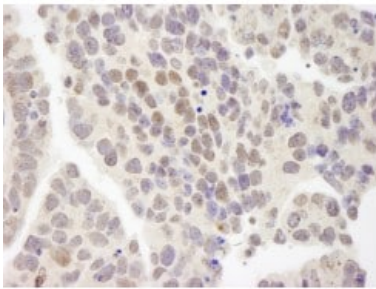
Detection of Human ZMYM3 by Immunohistochemistry on paraffin embedded formalin fixed section of Human breast adenocarcinoma using 1/250 ab84507. Detection: DAB staining

Immunohistochemistry (Formalin/PFA-fixed paraffin-embedded sections) - Anti-ZMYM3 antibody (ab84507)



Detection of Human ZMYM3 by Immunohistochemistry on paraffin embedded formalin fixed section of Human ovarian carcinoma using 1/250 ab84507. Detection: DAB staining

Immunohistochemistry (Formalin/PFA-fixed paraffin-embedded sections) - Anti-ZMYM3 antibody (ab84507)



Detection of Mouse ZMYM3 by Immunohistochemistry on paraffin embedded formalin fixed section of Mouse teratoma using 1/250 ab84507. Detection: DAB staining

Immunohistochemistry (Formalin/PFA-fixed paraffin-embedded sections) - Anti-ZMYM3 antibody (ab84507)

Please note: All products are "FOR RESEARCH USE ONLY. NOT FOR USE IN DIAGNOSTIC PROCEDURES"

Our Abpromise to you: Quality guaranteed and expert technical support

- Replacement or refund for products not performing as stated on the datasheet
- Valid for 12 months from date of delivery
- Response to your inquiry within 24 hours
- We provide support in Chinese, English, French, German, Japanese and Spanish
- Extensive multi-media technical resources to help you
- We investigate all quality concerns to ensure our products perform to the highest standards

If the product does not perform as described on this datasheet, we will offer a refund or replacement. For full details of the Abpromise,

please visit <https://www.abcam.cn/abpromise> or contact our technical team.

Terms and conditions

- Guarantee only valid for products bought direct from Abcam or one of our authorized distributors