

Anti-Zinc Alpha 2 Glycoprotein antibody ab47116

2 References [1 图像](#)

概述

产品名称	Anti-Zinc Alpha 2 Glycoprotein抗体
描述	兔多克隆抗体to Zinc Alpha 2 Glycoprotein
宿主	Rabbit
特异性	This antibody is specific for Zinc Alpha 2 Glycoprotein.
经测试应用	适用于: WB
种属反应性	与反应: Human
免疫原	Recombinant human Zinc Alpha 2 Glycoprotein. 278 amino acid residues of the human ZA2G and 12 additional amino acid residues. Source of immunogen, 293 cell line (Human embryonic kidney)
阳性对照	Human serum
常规说明	<p>The Life Science industry has been in the grips of a reproducibility crisis for a number of years. Abcam is leading the way in addressing this with our range of recombinant monoclonal antibodies and knockout edited cell lines for gold-standard validation. Please check that this product meets your needs before purchasing.</p> <p>If you have any questions, special requirements or concerns, please send us an inquiry and/or contact our Support team ahead of purchase. Recommended alternatives for this product can be found below, along with publications, customer reviews and Q&As</p>

性能

形式	Liquid
存放说明	Shipped at 4°C. Store at +4°C short term (1-2 weeks). Upon delivery aliquot. Store at -20°C or -80°C. Avoid freeze / thaw cycle.
存储溶液	Constituents: 0.134% PBS, 0.58% Sodium chloride
纯度	Immunogen affinity purified
纯化说明	Immunoaffinity chromatography on a column with immobilized recombinant human Zinc Alpha 2 Glycoprotein.
克隆	多克隆
同种型	IgG

应用

The Abpromise guarantee **Abpromise™**承诺保证使用ab47116于以下的经测试应用

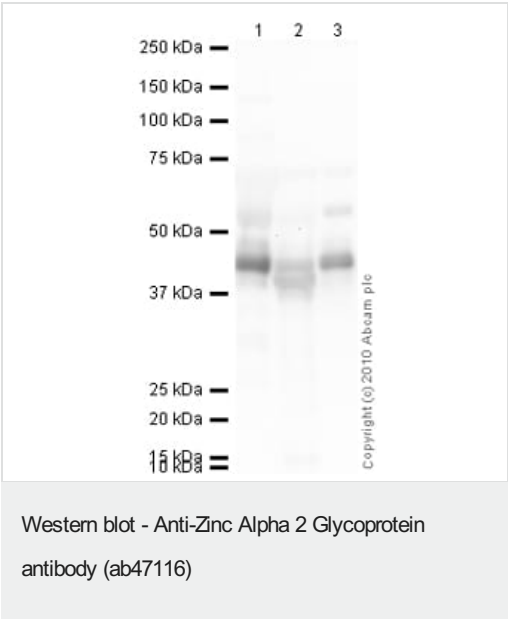
“应用说明”部分 下显示的仅为推荐的起始稀释度;实际最佳的稀释度/浓度应由使用者检定。

应用	Ab评论	说明
WB		Use a concentration of 1 µg/ml. Predicted molecular weight: 34 kDa.

靶标

功能	Stimulates lipid degradation in adipocytes and causes the extensive fat losses associated with some advanced cancers. May bind polyunsaturated fatty acids.
组织特异性	Blood plasma, seminal plasma, urine, saliva, sweat, epithelial cells of various human glands, liver.
序列相似性	Belongs to the MHC class I family. Contains 1 Ig-like C1-type (immunoglobulin-like) domain.
细胞定位	Secreted.

图片



All lanes : Anti-Zinc Alpha 2 Glycoprotein antibody (ab47116) at 1 µg/ml

Lane 1 : Human Plasma Total Protein Lysate

Lane 2 : Human liver tissue lysate - total protein ([ab29889](#))

Lane 3 : Human testis tissue lysate - total protein ([ab30257](#))

Lysates/proteins at 10 µg per lane.

Secondary

All lanes : Goat Anti-Rabbit IgG H&L (HRP) preadsorbed ([ab97080](#)) at 1/5000 dilution

Developed using the ECL technique.

Performed under reducing conditions.

Predicted band size: 34 kDa

Observed band size: 43 kDa

Additional bands at: 55 kDa. We are unsure as to the identity of these extra bands.

Exposure time: 30 seconds

Please note: All products are "FOR RESEARCH USE ONLY. NOT FOR USE IN DIAGNOSTIC PROCEDURES"

Our Abpromise to you: Quality guaranteed and expert technical support

- Replacement or refund for products not performing as stated on the datasheet
- Valid for 12 months from date of delivery
- Response to your inquiry within 24 hours
- We provide support in Chinese, English, French, German, Japanese and Spanish
- Extensive multi-media technical resources to help you
- We investigate all quality concerns to ensure our products perform to the highest standards

If the product does not perform as described on this datasheet, we will offer a refund or replacement. For full details of the Abpromise, please visit <https://www.abcam.cn/abpromise> or contact our technical team.

Terms and conditions

- Guarantee only valid for products bought direct from Abcam or one of our authorized distributors