

Anti-Zebrafish Gut Secretory Cell Epitopes antibody [FIS 2F11/2] ab71286

[30 References](#) [1 图像](#)

概述

产品名称	抗斑马鱼 Gut Secretory Cell Epitopes 抗体[FIS 2F11/2]
描述	小鼠单克隆抗体[FIS 2F11/2] to 斑马鱼 Gut Secretory Cell Epitopes
宿主	Mouse
经测试应用	适用于: IHC-P
种属反应性	与反应: Zebrafish
免疫原	Tissue, cells or virus corresponding to Zebrafish Zebrafish Gut Secretory Cell Epitopes. Tissue/cell preparation: Lysate of zebrafish intestine.
阳性对照	IHC: Zebrafish Larvae (5 days)
常规说明	<p>This antibody clone is manufactured by Abcam. If you require a custom buffer formulation or conjugation for your experiments, please contact orders@abcam.com.</p> <p>The Life Science industry has been in the grips of a reproducibility crisis for a number of years. Abcam is leading the way in addressing this with our range of recombinant monoclonal antibodies and knockout edited cell lines for gold-standard validation. Please check that this product meets your needs before purchasing.</p> <p>If you have any questions, special requirements or concerns, please send us an inquiry and/or contact our Support team ahead of purchase. Recommended alternatives for this product can be found below, along with publications, customer reviews and Q&As</p>

性能

形式	Liquid
存放说明	Shipped at 4°C. Store at +4°C short term (1-2 weeks). Upon delivery aliquot. Store at -20°C long term. Avoid freeze / thaw cycle.
存储溶液	Preservative: 0.02% Sodium azide Constituent: 99.98% PBS
纯度	Protein G purified
克隆	单克隆
克隆编号	FIS 2F11/2

骨髓瘤	Sp2/0-Ag14
同种型	IgG1
轻链类型	kappa

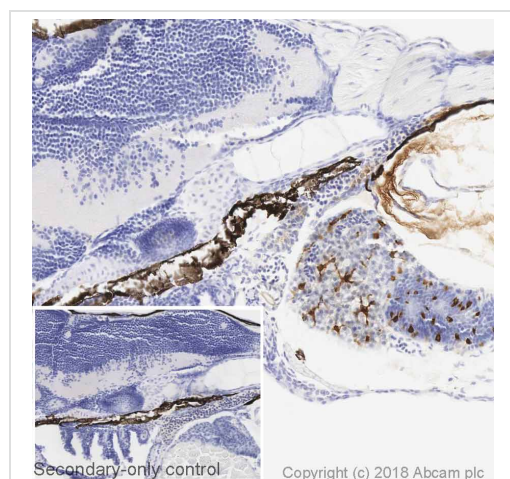
应用

The Abpromise guarantee **Abpromise™**承诺保证使用ab71286于以下的经测试应用

“应用说明”部分 下显示的仅为推荐的起始稀释度;实际最佳的稀释度/浓度应由使用者检定。

应用	Ab评论	说明
IHC-P		Use a concentration of 0.5 µg/ml.

图片



IHC image of Zebrafish Gut Secretory Cell Epitopes staining in a section of formalin-fixed paraffin-embedded Zebra fish Larvae (5 days) performed on a Leica BOND™ system using the standard protocol F. The section was pre-treated using heat mediated antigen retrieval with sodium citrate buffer (pH6, epitope retrieval solution 1) for 20mins. The section was then incubated with ab71286, 0.5ug/ml, for 15 mins at room temperature and detected using an HRP conjugated compact polymer system. DAB was used as the chromogen. The section was then counterstained with haematoxylin and mounted with DPX. The inset secondary-only control image is taken from an identical assay without primary antibody.

Immunohistochemistry (Formalin/PFA-fixed paraffin-embedded sections) - Anti-Zebrafish Gut Secretory Cell Epitopes antibody [FIS 2F11/2] (ab71286)

Please note: All products are "FOR RESEARCH USE ONLY. NOT FOR USE IN DIAGNOSTIC PROCEDURES"

Our Abpromise to you: Quality guaranteed and expert technical support

- Replacement or refund for products not performing as stated on the datasheet
- Valid for 12 months from date of delivery
- Response to your inquiry within 24 hours
- We provide support in Chinese, English, French, German, Japanese and Spanish
- Extensive multi-media technical resources to help you
- We investigate all quality concerns to ensure our products perform to the highest standards

If the product does not perform as described on this datasheet, we will offer a refund or replacement. For full details of the Abpromise,

please visit <https://www.abcam.cn/abpromise> or contact our technical team.

Terms and conditions

- Guarantee only valid for products bought direct from Abcam or one of our authorized distributors