


Anti-ZDHHC9 antibody ab74504

[3 References](#) [2 图像](#)

概述

产品名称	Anti-ZDHHC9抗体
描述	兔多克隆抗体to ZDHHC9
宿主	Rabbit
经测试应用	适用于: WB, IHC-P
种属反应性	与反应: Human 预测可用于: Mouse, Rat 
免疫原	Synthetic peptide derived from C-terminal region of human ZDHHC9.
常规说明	<p>The Life Science industry has been in the grips of a reproducibility crisis for a number of years. Abcam is leading the way in addressing this with our range of recombinant monoclonal antibodies and knockout edited cell lines for gold-standard validation. Please check that this product meets your needs before purchasing.</p> <p>If you have any questions, special requirements or concerns, please send us an inquiry and/or contact our Support team ahead of purchase. Recommended alternatives for this product can be found below, along with publications, customer reviews and Q&As</p>

性能

形式	Liquid
存放说明	Shipped at 4°C. Upon delivery aliquot and store at -20°C. Avoid freeze / thaw cycles.
存储溶液	pH: 7.40 Preservative: 0.02% Sodium azide Constituents: 50% Glycerol (glycerin, glycerine), 0.87% Sodium chloride, PBS
纯度	Immunogen affinity purified
克隆	多克隆
同种型	IgG

应用

The Abpromise guarantee **Abpromise™**承诺保证使用ab74504于以下的经测试应用

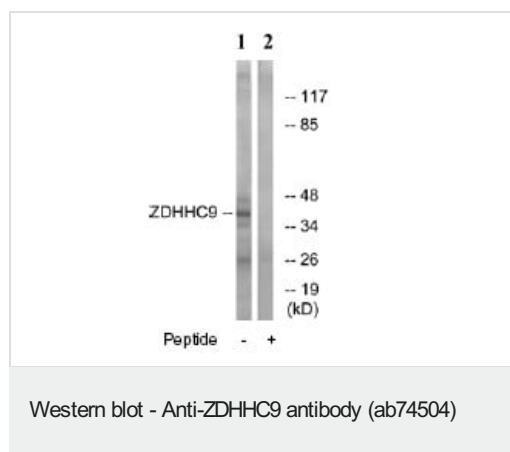
“应用说明”部分 下显示的仅为推荐的起始稀释度;实际最佳的稀释度/浓度应由使用者检定。

应用	Ab评论	说明
WB		1/500 - 1/1000. Detects a band of approximately 41 kDa (predicted molecular weight: 41 kDa).
IHC-P		1/50 - 1/100.

靶标

功能	The ZDHHC9-GOLGA7 complex is a palmitoyltransferase specific for HRAS and NRAS.
组织特异性	Highly expressed in kidney, skeletal muscle, brain, lung and liver. Absent in thymus, spleen and leukocytes.
疾病相关	Defects in ZDHHC9 are the cause of mental retardation syndromic X-linked ZDHHC9-related (MRXSZ) [MIM:300799]. A disorder characterized by significantly sub-average general intellectual functioning associated with impairments in adaptative behavior and manifested during the developmental period. Some patients have marfanoid habitus as an additional feature.
序列相似性	Belongs to the DHHC palmitoyltransferase family. ERF2/ZDHHC9 subfamily. Contains 1 DHHC-type zinc finger.
结构域	The DHHC domain is required for palmitoyltransferase activity.
细胞定位	Endoplasmic reticulum membrane. Golgi apparatus membrane.

图片



All lanes : Anti-ZDHHC9 antibody (ab74504) at 1/500 dilution

Lane 1 : extracts from COLO cells

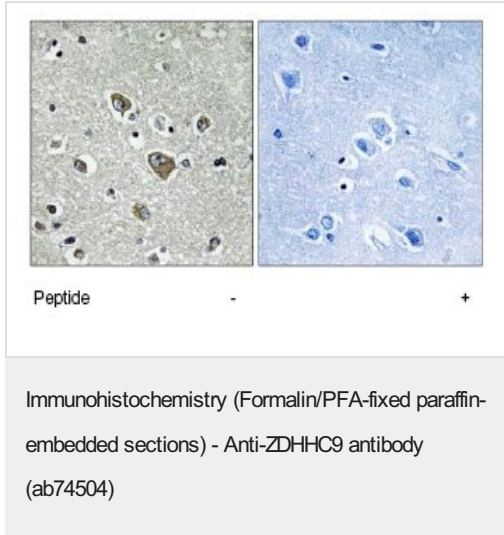
Lane 2 : extracts from COLO cells with immunising peptide at 10 μ g

Lysates/proteins at 30 μ g per lane.

Predicted band size: 41 kDa

Observed band size: 41 kDa

Additional bands at: 26 kDa, 34 kDa, 48 kDa. We are unsure as to the identity of these extra bands.



Immunohistochemistry analysis of paraffin-embedded human brain tissue using 1/50 ab74504. Left: untreated sample. Right: sample treated with immunising peptide.

Please note: All products are "FOR RESEARCH USE ONLY. NOT FOR USE IN DIAGNOSTIC PROCEDURES"

Our Abpromise to you: Quality guaranteed and expert technical support

- Replacement or refund for products not performing as stated on the datasheet
- Valid for 12 months from date of delivery
- Response to your inquiry within 24 hours
- We provide support in Chinese, English, French, German, Japanese and Spanish
- Extensive multi-media technical resources to help you
- We investigate all quality concerns to ensure our products perform to the highest standards

If the product does not perform as described on this datasheet, we will offer a refund or replacement. For full details of the Abpromise, please visit <https://www.abcam.cn/abpromise> or contact our technical team.

Terms and conditions

- Guarantee only valid for products bought direct from Abcam or one of our authorized distributors