

Anti-ZC3HAV1L antibody ab121624

2 图像

概述

产品名称	Anti-ZC3HAV1L 抗体
描述	兔多克隆抗体 to ZC3HAV1L
宿主	Rabbit
经测试应用	适用于: ICC/IF, IHC-P
种属反应性	与反应: Human
免疫原	antigen sequence: CKRSHQLIHA ASLKLLQDQG LNIPSVVNFQ IISTYKHMKL HKMLENTDNS SPSTEHSQLG EKQGVHAAGA AEAGPLASVP AQSAAKKPCPV, corresponding to amino acids 207-296 of Human ZC3HAV1L.

[Run BLAST with Expasy](#) [Run BLAST with NCBI](#)

阳性对照	Human pancreas tissue.
常规说明	<p>The Life Science industry has been in the grips of a reproducibility crisis for a number of years. Abcam is leading the way in addressing this with our range of recombinant monoclonal antibodies and knockout edited cell lines for gold-standard validation. Please check that this product meets your needs before purchasing.</p> <p>If you have any questions, special requirements or concerns, please send us an inquiry and/or contact our Support team ahead of purchase. Recommended alternatives for this product can be found below, along with publications, customer reviews and Q&As</p>

性能

形式	Liquid
存放说明	Shipped at 4°C. Upon delivery aliquot and store at -20°C. Avoid freeze / thaw cycles.
存储溶液	pH: 7.20 Preservative: 0.02% Sodium azide Constituents: 59% PBS, 40% Glycerol (glycerin, glycerine)
纯度	Immunogen affinity purified
克隆	多克隆
同种型	IgG

应用

The Abpromise guarantee

Abpromise™ 承诺保证使用 ab121624 于以下的经测试应用

“应用说明”部分 下显示的仅为推荐的起始稀释度；实际最佳的稀释度/浓度应由使用者检定。

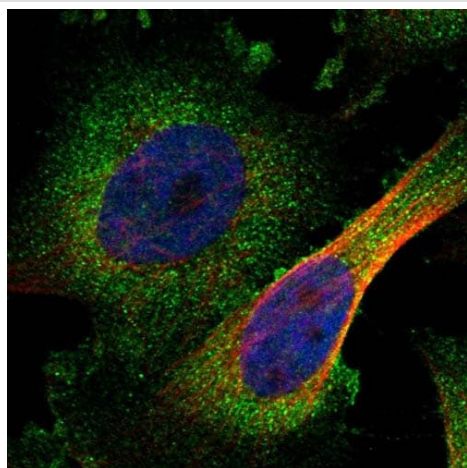
应用	Ab评论	说明
ICC/IF		Use a concentration of 0.25 - 2 µg/ml.
IHC-P		1/200 - 1/500. Perform heat mediated antigen retrieval with citrate buffer pH 6 before commencing with IHC staining protocol. Use buffer at pH 6 for antigen retrieval.

靶标

翻译后修饰

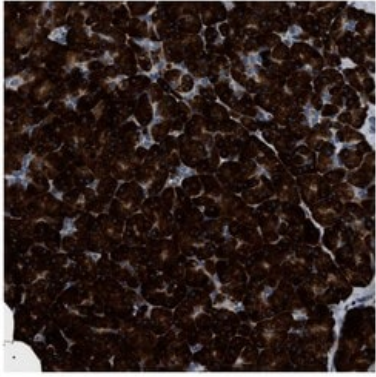
Phosphorylated upon DNA damage, probably by ATM or ATR.

图片



Immunofluorescent staining of Human cell line U-251MG shows positivity in cytoplasm. Recommended concentration of ab121624 1-4 µg/ml. Cells treated with PFA/Triton X-100.

Immunocytochemistry/ Immunofluorescence - Anti-ZC3HAV1L antibody (ab121624)



ab121624 at 1/500 staining ZC3HAV1L in Paraffin Embedded Human pancreas tissue by Immunohistochemistry.

Note: strong cytoplasmic positivity in exocrine glandular cells.

Immunohistochemistry (Formalin/PFA-fixed paraffin-embedded sections) - Anti-ZC3HAV1L antibody (ab121624)

Please note: All products are "FOR RESEARCH USE ONLY. NOT FOR USE IN DIAGNOSTIC PROCEDURES"

Our Abpromise to you: Quality guaranteed and expert technical support

- Replacement or refund for products not performing as stated on the datasheet
- Valid for 12 months from date of delivery
- Response to your inquiry within 24 hours

- We provide support in Chinese, English, French, German, Japanese and Spanish
- Extensive multi-media technical resources to help you
- We investigate all quality concerns to ensure our products perform to the highest standards

If the product does not perform as described on this datasheet, we will offer a refund or replacement. For full details of the Abpromise, please visit <https://www.abcam.cn/abpromise> or contact our technical team.

Terms and conditions

- Guarantee only valid for products bought direct from Abcam or one of our authorized distributors