

Anti-ZC3H12D antibody ab100862

2 References [2 图像](#)

概述

产品名称	Anti-ZC3H12D 抗体
描述	兔多克隆抗体 to ZC3H12D
宿主	Rabbit
经测试应用	适用于: WB, IHC-P
种属反应性	与反应: Human
免疫原	A 16 amino acid peptide from the intermediate residues of Human ZC3H12D protein (NP_997243).
阳性对照	WB: Fetal small intestine lysate and fetal spleen lysate IHC-P: Fetal small intestine
常规说明	<p>The Life Science industry has been in the grips of a reproducibility crisis for a number of years. Abcam is leading the way in addressing this with our range of recombinant monoclonal antibodies and knockout edited cell lines for gold-standard validation. Please check that this product meets your needs before purchasing.</p> <p>If you have any questions, special requirements or concerns, please send us an inquiry and/or contact our Support team ahead of purchase. Recommended alternatives for this product can be found below, along with publications, customer reviews and Q&As</p>

性能

形式	Lyophilized: Add 200 ul of sterile distilled water
存放说明	Shipped at 4°C. Upon delivery aliquot and store at -20°C. Avoid repeated freeze / thaw cycles.
存储溶液	<p>pH: 7.20</p> <p>Preservative: 0.02% Sodium azide</p> <p>Constituents: 0.5% BSA, PBS</p>
纯度	Immunogen affinity purified
克隆	多克隆
同种型	IgG

应用

The Abpromise guarantee

Abpromise™ 承诺保证使用 ab100862 于以下的经测试应用

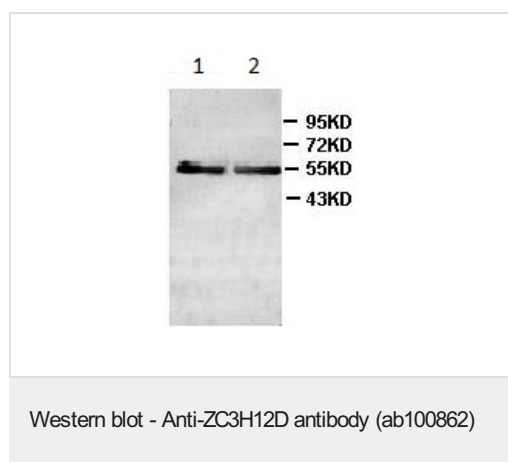
“应用说明”部分 下显示的仅为推荐的起始稀释度;实际最佳的稀释度/浓度应由使用者检定。

应用	Ab评论	说明
WB		1/500 - 1/1000. Predicted molecular weight: 58 kDa.
IHC-P		Use at an assay dependent concentration.

靶标

功能	May regulate cell growth likely by suppressing RB1 phosphorylation (PubMed:19531561). May function as RNase and regulate the levels of target RNA species (Potential). In association with ZC3H12A enhances the degradation of interleukin IL-6 mRNA level in activated macrophages (PubMed:26134560). Serve as a tumor suppressor in certain leukemia cells (PubMed:17210687). Overexpression inhibits the G1 to S phase progression through suppression of RB1 phosphorylation (PubMed:19531561).
组织特异性	Expressed in normal human lymphocytes but defective in some leukemia/lymphoma cell lines.
疾病相关	A chromosomal aberration involving ZC3H12D may be the cause of the transformation of follicular lymphoma (FL) to diffuse large B-cell lymphoma (DLBCL). Translocation t(2;6)(p12;q25) with IGH. Resulting protein may not be expressed.
序列相似性	Belongs to the ZC3H12 family. Contains 1 C3H1-type zinc finger.
细胞定位	Cytoplasm. Nucleus; Cytoplasm. Localized as discrete granules. Colocalized with mRNA-processing body markers, AGO2 and DCP1A, but not with a stress granule maker, TIA1, in the cytoplasm and Cytoplasm, P-body. Colocalizes with ZC3H12A in GW bodies (GWBs) (PubMed:26134560).

图片



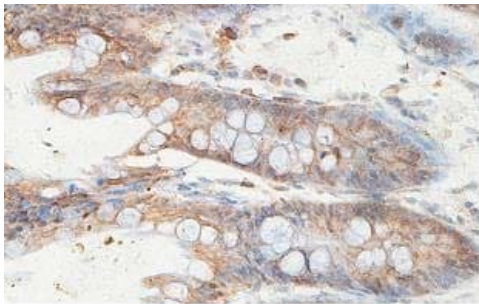
All lanes : Anti-ZC3H12D antibody (ab100862) at 1/500 dilution

Lane 1 : Human fetal small intestine lysate

Lane 2 : Human fetal spleen lysate

Predicted band size: 58 kDa

Observed band size: 57 kDa



Immunohistochemistry (Formalin/PFA-fixed paraffin-embedded sections) - Anti-ZC3H12D antibody (ab100862)

ab100862, at a 1/100 dilution, staining ZC3H12D in formalin-fixed, paraffin-embedded Human fetal small intestine tissue, showing cytoplasmic staining, by Immunohistochemistry.

Please note: All products are "FOR RESEARCH USE ONLY. NOT FOR USE IN DIAGNOSTIC PROCEDURES"

Our Abpromise to you: Quality guaranteed and expert technical support

- Replacement or refund for products not performing as stated on the datasheet
- Valid for 12 months from date of delivery
- Response to your inquiry within 24 hours
- We provide support in Chinese, English, French, German, Japanese and Spanish
- Extensive multi-media technical resources to help you
- We investigate all quality concerns to ensure our products perform to the highest standards

If the product does not perform as described on this datasheet, we will offer a refund or replacement. For full details of the Abpromise, please visit <https://www.abcam.cn/abpromise> or contact our technical team.

Terms and conditions

- Guarantee only valid for products bought direct from Abcam or one of our authorized distributors