

### Anti-YTHDC1 antibody ab122340

★★★★★ [8 Abreviews](#) [16 References](#) [8 图像](#)

#### 概述

产品名称	Anti-YTHDC1抗体
描述	兔多克隆抗体to YTHDC1
宿主	Rabbit
经测试应用	适用于: ICC/IF, IHC-P, WB
种属反应性	与反应: Human
免疫原	antigen sequence, corresponding to internal sequence amino acids 69-160 (LVSKPLSSSV SNNKRIVSTK GKSATEYKNE EYQRSERNKR LDADRKIRLS SSASREPYKN QPEKTCVRKR DPERRAKSPT PDGSERIGLE VD) of Human YTHDC1 <a href="#">Run BLAST with ExPASy</a> <a href="#">Run BLAST with NCBI</a>
阳性对照	IHC-P: Human esophagus, fallopian tube, duodenum, endometrium and testis tissues. WB: RT-4 and U-251 MG cell lysates. ICC/IF: HeLa and U-2 OS cells.
常规说明	<p>The Life Science industry has been in the grips of a reproducibility crisis for a number of years. Abcam is leading the way in addressing this with our range of recombinant monoclonal antibodies and knockout edited cell lines for gold-standard validation. Please check that this product meets your needs before purchasing.</p> <p>If you have any questions, special requirements or concerns, please send us an inquiry and/or contact our Support team ahead of purchase. Recommended alternatives for this product can be found below, along with publications, customer reviews and Q&amp;As</p>

#### 性能

形式	Liquid
存放说明	Shipped at 4°C. Upon delivery aliquot and store at -20°C. Avoid freeze / thaw cycles.
存储溶液	pH: 7.20 Preservative: 0.02% Sodium azide Constituents: 59% PBS, 40% Glycerol
纯度	Immunogen affinity purified
克隆	多克隆
同种型	IgG

## 应用

### The Abpromise guarantee

**Abpromise™** 承诺保证使用 ab122340 于以下的经测试应用

“应用说明”部分 下显示的仅为推荐的起始稀释度;实际最佳的稀释度/浓度应由使用者检定。

应用	Ab评论	说明
ICC/IF		Use a concentration of 0.25 - 2 µg/ml.
IHC-P	★★★★★ (5)	1/200 - 1/500. Perform heat mediated antigen retrieval with citrate buffer pH 6 before commencing with IHC staining protocol.
WB	★★★★★ (2)	1/250 - 1/500. Predicted molecular weight: 85 kDa.

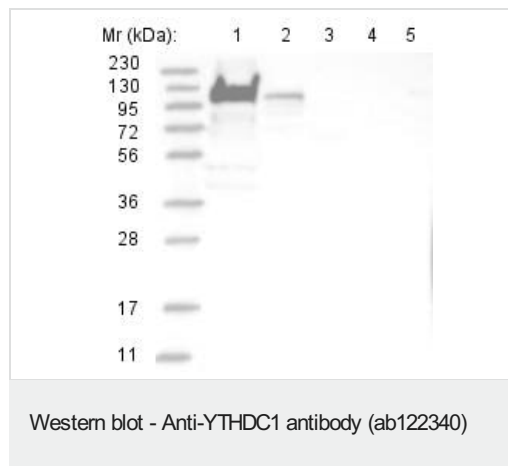
## 靶标

**功能** May be part of a signal transduction pathway that influences splice site selection.

**序列相似性** Contains 1 YTH domain.

**细胞定位** Nucleus. Localizes to a novel subnuclear structure, the YT bodies.

## 图片



**All lanes** : Anti-YTHDC1 antibody (ab122340) at 1/250 dilution

**Lane 1** : RT-4 cell lysate

**Lane 2** : U-251 MG cell lysate

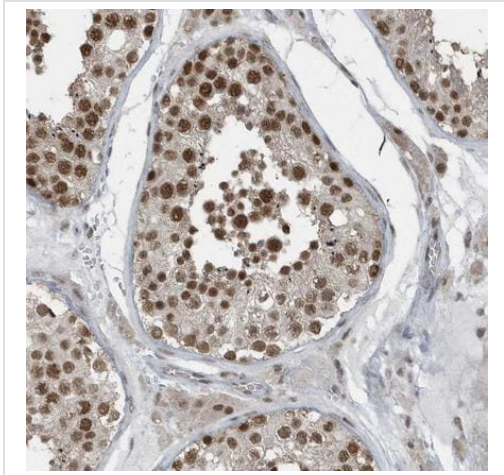
**Lane 3** : Human plasma

**Lane 4** : Human liver lysate

**Lane 5** : Human tonsil lysate

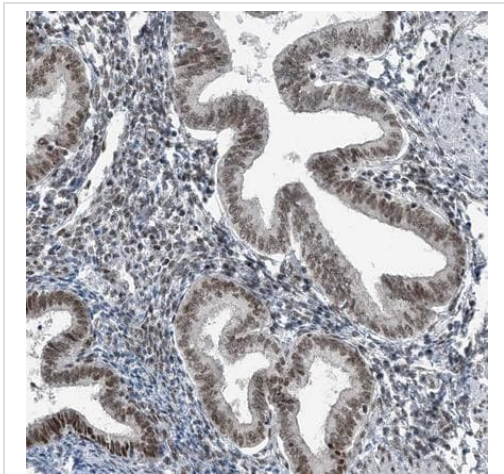
Developed using the ECL technique.

**Predicted band size:** 85 kDa



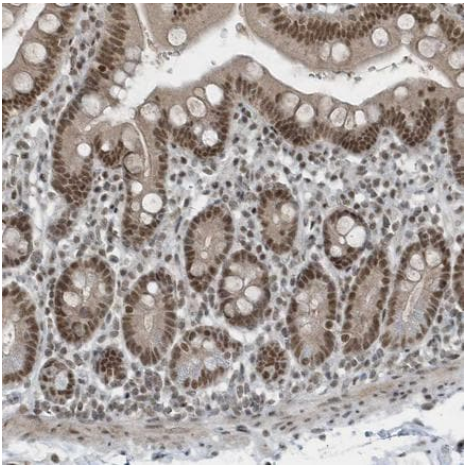
Paraffin-embedded human testis tissue stained for YTHDC1 using ab122340 at 1/500 dilution in immunohistochemical analysis.

Immunohistochemistry (Formalin/PFA-fixed paraffin-embedded sections) - Anti-YTHDC1 antibody (ab122340)



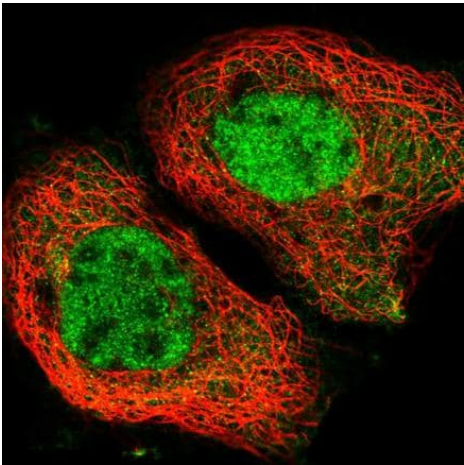
Paraffin-embedded human endometrium tissue stained for YTHDC1 using ab122340 at 1/500 dilution in immunohistochemical analysis.

Immunohistochemistry (Formalin/PFA-fixed paraffin-embedded sections) - Anti-YTHDC1 antibody (ab122340)



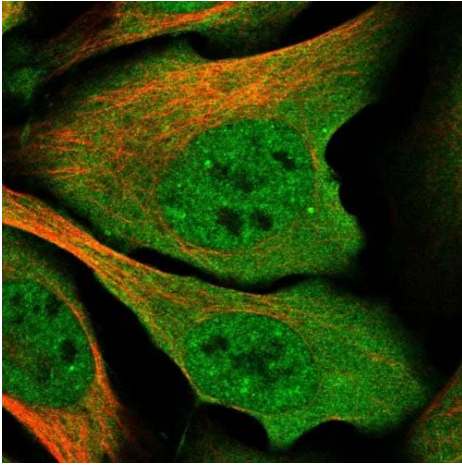
Immunohistochemistry (Formalin/PFA-fixed paraffin-embedded sections) - Anti-YTHDC1 antibody (ab122340)

Paraffin-embedded human duodenum tissue stained for YTHDC1 using ab122340 at 1/500 dilution in immunohistochemical analysis.



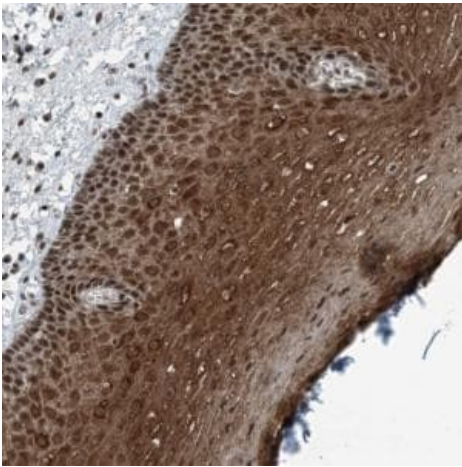
Immunocytochemistry/ Immunofluorescence - Anti-YTHDC1 antibody (ab122340)

PFA-fixed, Triton X-100 permeabilized A431 (human epidermoid carcinoma cell line) cells stained for YTHDC1 (green) using ab122340 at 4 µg/ml in ICC/IF.



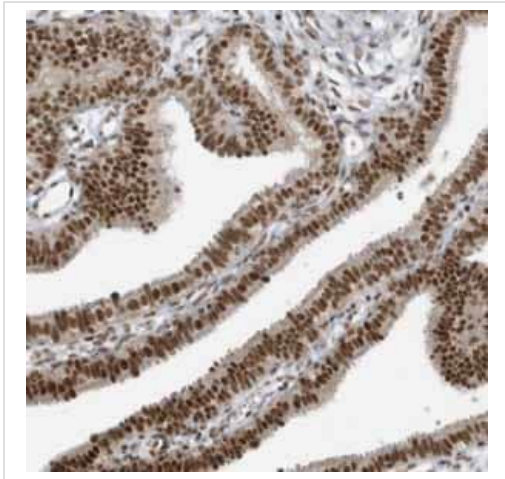
Immunocytochemistry/ Immunofluorescence - Anti-YTHDC1 antibody (ab122340)

Immunofluorescent staining of Human cell line U-2 OS shows positivity in nucleus but not nucleoli and plasma membrane. Recommended concentration of ab122340 1-4  $\mu\text{g/ml}$ . Cells treated with PFA/Triton X-100.



Immunohistochemistry (Formalin/PFA-fixed paraffin-embedded sections) - Anti-YTHDC1 antibody (ab122340)

ab122340, at a 1/400 dilution, staining YTHDC1 in paraffin-embedded Human esophagus tissue by immunohistochemistry.



Immunohistochemical staining of Human fallopian tube shows strong nuclear positivity in glandular cells using ab122340

Immunohistochemistry (Formalin/PFA-fixed paraffin-embedded sections) - Anti-YTHDC1 antibody (ab122340)

**Please note:** All products are "FOR RESEARCH USE ONLY. NOT FOR USE IN DIAGNOSTIC PROCEDURES"

### **Our Abpromise to you: Quality guaranteed and expert technical support**

---

- Replacement or refund for products not performing as stated on the datasheet
- Valid for 12 months from date of delivery
- Response to your inquiry within 24 hours
- We provide support in Chinese, English, French, German, Japanese and Spanish
- Extensive multi-media technical resources to help you
- We investigate all quality concerns to ensure our products perform to the highest standards

If the product does not perform as described on this datasheet, we will offer a refund or replacement. For full details of the Abpromise, please visit <https://www.abcam.cn/abpromise> or contact our technical team.

### **Terms and conditions**

---

- Guarantee only valid for products bought direct from Abcam or one of our authorized distributors