


Anti-XRCC2 antibody [EPR5149] ab124900

重组 RabMAb

1 References **3 图像**

概述

产品名称	Anti-XRCC2抗体[EPR5149]
描述	兔单克隆抗体[EPR5149] to XRCC2
宿主	Rabbit
经测试应用	适用于: Flow Cyt (Intra), WB 不适用于: ICC/IF, IHC-P or IP
种属反应性	与反应: Human 预测可用于: Mouse, Rat 
免疫原	Synthetic peptide within Human XRCC2 aa 200-300. The exact sequence is proprietary.
阳性对照	Human testis, HeLa, SW480, SH-SY5Y, Caco 2 and Human kidney lysates.
常规说明	<p>This product is a recombinant monoclonal antibody, which offers several advantages including:</p> <ul style="list-style-type: none"> - High batch-to-batch consistency and reproducibility - Improved sensitivity and specificity - Long-term security of supply - Animal-free production <p>For more information see here.</p> <p>Our RabMAb[®] technology is a patented hybridoma-based technology for making rabbit monoclonal antibodies. For details on our patents, please refer to RabMAb[®] patents.</p>

性能

形式	Liquid
存放说明	Shipped at 4°C. Store at -20°C. Stable for 12 months at -20°C.
存储溶液	pH: 7.2 Preservative: 0.05% Sodium azide Constituents: 40% Glycerol (glycerin, glycerine), 9.85% Tris glycine, 50% Tissue culture supernatant
纯度	Protein A purified
克隆	单克隆
克隆编号	EPR5149

同种型IgG

应用

The Abpromise guarantee **Abpromise™**承诺保证使用ab124900于以下的经测试应用
“应用说明”部分 下显示的仅为推荐的起始稀释度;实际最佳的稀释度/浓度应由使用者检定。

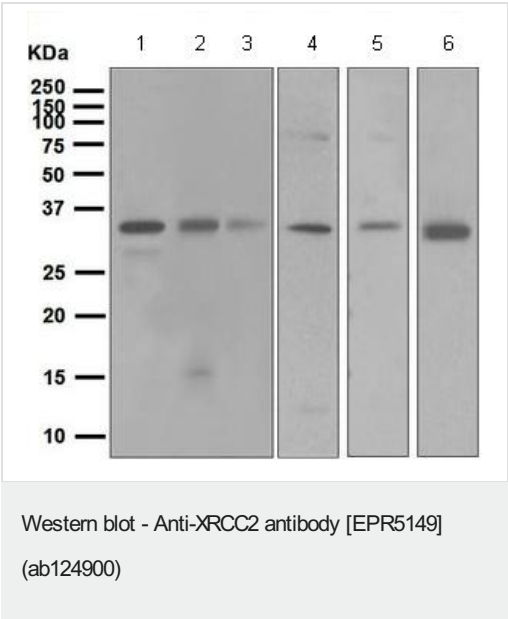
应用	Ab评论	说明
Flow Cyt (Intra)		1/100 - 1/500. ab172730 - Rabbit monoclonal IgG, is suitable for use as an isotype control with this antibody.
WB		1/10000 - 1/50000. Detects a band of approximately 34 kDa (predicted molecular weight: 32 kDa).

应用说明Is unsuitable for ICC/IF,IHC-P or IP.

靶标

功能	Involved in the homologous recombination repair (HRR) pathway of double-stranded DNA, thought to repair chromosomal fragmentation, translocations and deletions. The BCDX2 complex binds single-stranded DNA, single-stranded gaps in duplex DNA and specifically to nicks in duplex DNA.
序列相似性	Belongs to the RecA family. RAD51 subfamily.
翻译后修饰	Phosphorylated upon DNA damage, probably by ATM or ATR.
细胞定位	Cytoplasm, Cytoskeleton, Nucleus

图片



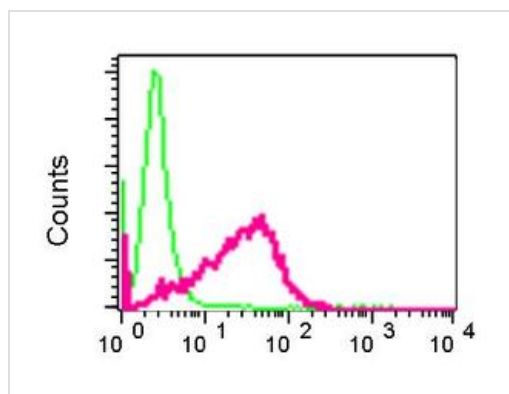
All lanes : Anti-XRCC2 antibody [EPR5149] (ab124900) at 1/10000 dilution

- Lane 1 :** Human testis lysate
- Lane 2 :** HeLa lysate
- Lane 3 :** SW480 lysate
- Lane 4 :** SH-SY5Y lysate
- Lane 5 :** Caco 2 lysate
- Lane 6 :** Human kidney lysate

Lysates/proteins at 10 µg per lane.

Secondary
All lanes : Goat anti-Rabbit HRP at 1/2000 dilution





Predicted band size: 32 kDa



ab124900 at 1/100 dilution staining XRCC2 in permeabilised HeLa cells by intracellular flow cytometry (red). Rabbit IgG negative control antibody (green).

Flow Cytometry (Intracellular) - Anti-XRCC2 antibody
[EPR5149] (ab124900)

Why choose a recombinant antibody?

 <p>Research with confidence Consistent and reproducible results</p>	 <p>Long-term and scalable supply Recombinant technology</p>
 <p>Success from the first experiment Confirmed specificity</p>	 <p>Ethical standards compliant Animal-free production</p>

Anti-XRCC2 antibody [EPR5149] (ab124900)

Please note: All products are "FOR RESEARCH USE ONLY. NOT FOR USE IN DIAGNOSTIC PROCEDURES"

Our Abpromise to you: Quality guaranteed and expert technical support

- Replacement or refund for products not performing as stated on the datasheet
- Valid for 12 months from date of delivery
- Response to your inquiry within 24 hours
- We provide support in Chinese, English, French, German, Japanese and Spanish
- Extensive multi-media technical resources to help you
- We investigate all quality concerns to ensure our products perform to the highest standards

If the product does not perform as described on this datasheet, we will offer a refund or replacement. For full details of the Abpromise, please visit <https://www.abcam.cn/abpromise> or contact our technical team.

Terms and conditions

- Guarantee only valid for products bought direct from Abcam or one of our authorized distributors