

Anti-XRCC1 antibody [EPR4389(2)] ab134056

重组 RabMAb

★★★★★ **3 Abreviews** **16 References** **8 图像**

概述

产品名称	Anti-XRCC1抗体[EPR4389(2)]
描述	兔单克隆抗体[EPR4389(2)] to XRCC1
宿主	Rabbit
经测试应用	适用于: WB, IHC-P, ICC/IF 不适用于: Flow Cyt or IP
种属反应性	与反应: Mouse, Rat, Human
免疫原	Synthetic peptide within Human XRCC1 aa 1-100 (N terminal). The exact sequence is proprietary.
阳性对照	WB: HeLa, A375, Saos-2, PC-12 and NIH/3T3 cell lysates. Mouse brain and kidney tissue lysate IHC-P: Human testis tissue. ICC/IF: HeLa, PC-12 and NIH/3T3 cells.
常规说明	This product is a recombinant monoclonal antibody, which offers several advantages including: <ul style="list-style-type: none"> - High batch-to-batch consistency and reproducibility - Improved sensitivity and specificity - Long-term security of supply - Animal-free production For more information see here . Our RabMAb [®] technology is a patented hybridoma-based technology for making rabbit monoclonal antibodies. For details on our patents, please refer to RabMAb[®] patents .

性能

形式	Liquid
存放说明	Shipped at 4°C. Store at +4°C short term (1-2 weeks). Upon delivery aliquot. Store at -20°C. Stable for 12 months at -20°C.
存储溶液	pH: 7.2 Preservative: 0.05% Sodium azide Constituents: 0.1% BSA, 40% Glycerol (glycerin, glycerine), 9.85% Tris glycine, 50% Tissue culture supernatant
纯度	Protein A purified
克隆	单克隆

克隆编号EPR4389(2)

同种型IgG

应用

The Abpromise guarantee **Abpromise™**承诺保证使用ab134056于以下的经测试应用

“应用说明”部分 下显示的仅为推荐的起始稀释度;实际最佳的稀释度/浓度应由使用者检定。

应用	Ab评论	说明
WB		1/1000 - 1/10000. Predicted molecular weight: 69 kDa.
IHC-P		1/250 - 1/500. Perform heat mediated antigen retrieval with citrate buffer pH 6 before commencing with IHC staining protocol.
ICC/IF	★★★★★ (1)	1/100 - 1/250.

应用说明 Is unsuitable for Flow Cyt or IP.

靶标

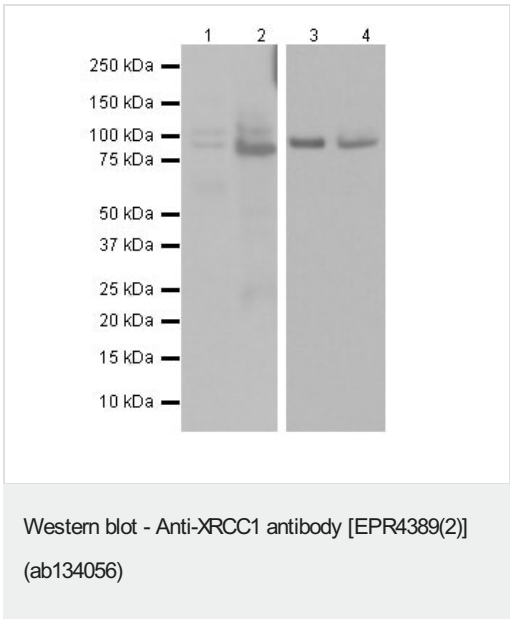
功能 Corrects defective DNA strand-break repair and sister chromatid exchange following treatment with ionizing radiation and alkylating agents.

序列相似性 Contains 2 BRCT domains.

翻译后修饰 Phosphorylation of Ser-371 causes dimer dissociation. Phosphorylation by CK2 promotes interaction with APTX and APLF.
Sumoylated.

细胞定位 Nucleus. Accumulates at sites of DNA damage.

图片



All lanes : Anti-XRCC1 antibody [EPR4389(2)] (ab134056) at 1/2000 dilution (purified)

Lane 1 : Mouse brain tissue lysate
Lane 2 : Mouse kidney lysate
Lane 3 : PC-12 (Rat adrenal gland pheochromocytoma) whole cell lysate
Lane 4 : NIH/3T3(Mouse embryonic fibroblast) whole cell lysate

Lysates/proteins at 20 µg per lane.

Secondary
All lanes : Goat Anti-Rabbit IgG, (H+L), Peroxidase conjugated(Pierce) at 1/1000 dilution

Predicted band size: 69 kDa

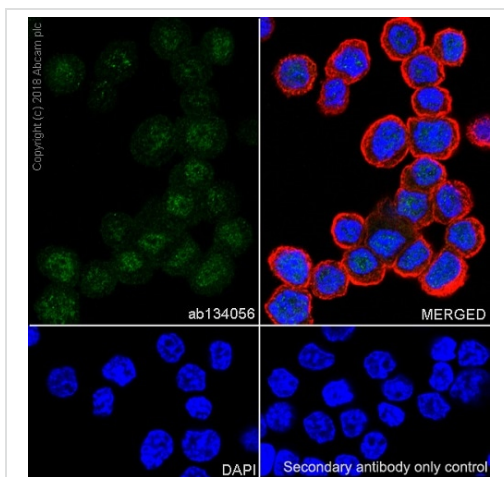
Observed band size: 85 kDa

Blocking/Diluting buffer: 5% NFDM /TBST

Exposure time:

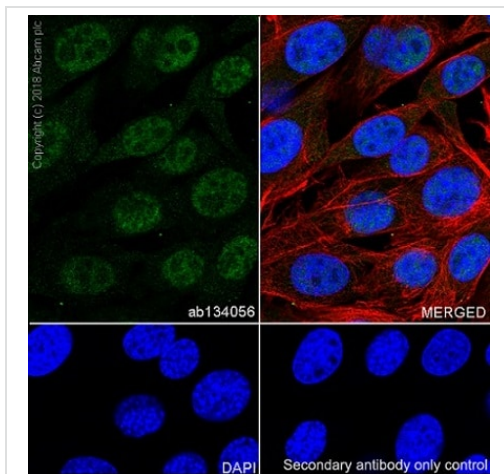
Lanes 1-2: 3 minutes

Lanes 3-4: 20 seconds



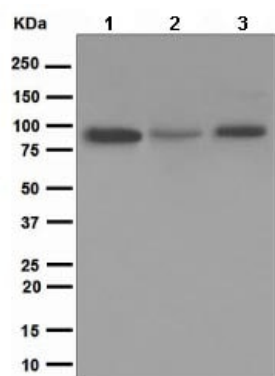
Immunocytochemistry/ Immunofluorescence - Anti-
XRCC1 antibody [EPR4389(2)] (ab134056)

Immunocytochemistry/Immunofluorescence analysis of PC-12(Rat adrenal gland pheochromocytoma) labelling with ab134056 at a dilution of 1/50 (4.66 µg/mL). Cells were fixed with 4% paraformaldehyde and permeabilized with 0.1% Triton X-100. Goat anti rabbit IgG (Alexa Fluor® 488, **ab150077**) (1/1000 dilution (2 µg/mL)) was used as the secondary antibody. The cells were co-stained with Ab195889 Anti-alpha Tubulin antibody [DM1A] - Microtubule Marker (Alexa Fluor® 594) 1/200 (2.5 µg/mL). Nuclei counterstained with DAPI (blue). Control: PBS instead of the primary antibody.



Immunocytochemistry/ Immunofluorescence - Anti-
XRCC1 antibody [EPR4389(2)] (ab134056)

Immunocytochemistry/Immunofluorescence analysis of NIH/3T3(Mouse embryonic fibroblast) labelling with ab134056 at a dilution of 1/50 (4.66 µg/mL). Cells were fixed with 4% paraformaldehyde and permeabilized with 0.1% Triton X-100. Goat anti rabbit IgG (Alexa Fluor® 488, **ab150077**) at 1/1000 dilution (2 µg/mL)) was used as the secondary antibody. The cells were co-stained with Ab195889 Anti-alpha Tubulin antibody [DM1A] - Microtubule Marker (Alexa Fluor® 594) 1/200 (2.5 µg/mL). Nuclei counterstained with DAPI (blue). Control: PBS instead of the primary antibody.



Western blot - Anti-XRCC1 antibody [EPR4389(2)] (ab134056)

All lanes : Anti-XRCC1 antibody [EPR4389(2)] (ab134056) at 1/1000 dilution

Lane 1 : HeLa cell lysate

Lane 2 : A375 cell lysate

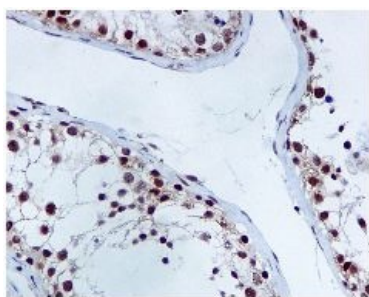
Lane 3 : Saos-2 cell lysate

Lysates/proteins at 10 µg per lane.

Secondary

All lanes : HRP labelled goat anti-rabbit at 1/2000 dilution

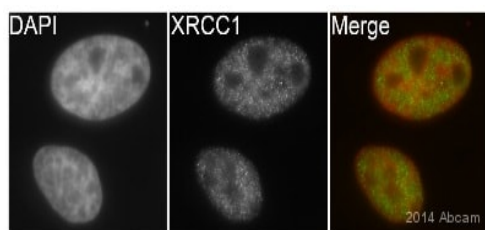
Predicted band size: 69 kDa



Immunohistochemistry (Formalin/PFA-fixed paraffin-embedded sections) - Anti-XRCC1 antibody [EPR4389(2)] (ab134056)

Immunohistochemical analysis of paraffin-embedded Human testis tissue labelling XRCC1 with ab134056 at 1/250 dilution.

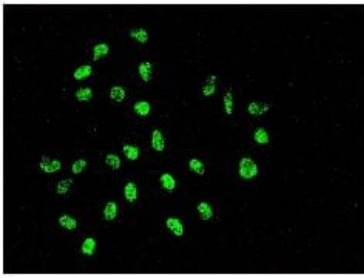
Perform heat mediated antigen retrieval with citrate buffer pH 6 before commencing with IHC staining protocol.



Immunocytochemistry/ Immunofluorescence - Anti-XRCC1 antibody [EPR4389(2)] (ab134056)

This image is courtesy of an Abreview submitted by Kirk McManus

ab134056 staining XRCC1 in human HeLa cells by ICC/IF (Immunocytochemistry/immunofluorescence). Cells were fixed with paraformaldehyde and permeabilized with 0.5% Triton X-100 in PBS. Samples were incubated with primary antibody (1/200 in PBS) for 1 hour at 22°C. An Alexa Fluor® 488-conjugated goat anti-rabbit IgG polyclonal (1/200) was used as the secondary antibody. Counterstained with DAPI.



Immunofluorescent analysis of HeLa cells labelling XRCC1 with ab134056 at 1/100 dilution.

Immunocytochemistry/ Immunofluorescence - Anti-XRCC1 antibody [EPR4389(2)] (ab134056)

Why choose a recombinant antibody?



Research with confidence
Consistent and reproducible results



Long-term and scalable supply
Recombinant technology



Success from the first experiment
Confirmed specificity



Ethical standards compliant
Animal-free production

Anti-XRCC1 antibody [EPR4389(2)] (ab134056)

Please note: All products are "FOR RESEARCH USE ONLY. NOT FOR USE IN DIAGNOSTIC PROCEDURES"

Our Abpromise to you: Quality guaranteed and expert technical support

- Replacement or refund for products not performing as stated on the datasheet
- Valid for 12 months from date of delivery
- Response to your inquiry within 24 hours
- We provide support in Chinese, English, French, German, Japanese and Spanish
- Extensive multi-media technical resources to help you
- We investigate all quality concerns to ensure our products perform to the highest standards

If the product does not perform as described on this datasheet, we will offer a refund or replacement. For full details of the Abpromise, please visit <https://www.abcam.cn/abpromise> or contact our technical team.

Terms and conditions

- Guarantee only valid for products bought direct from Abcam or one of our authorized distributors