

Anti-Wnt10b antibody ab70816

★★★★☆ [2 Abreviews](#) [22 References](#) [3 图像](#)

概述

产品名称	Anti-Wnt10b抗体
描述	兔多克隆抗体to Wnt10b
宿主	Rabbit
特异性	ab70816 only recognizes the longer isoform of Wnt10b and will not cross-react with Wnt10a.
经测试应用	适用于: ICC/IF, IHC-P, WB
种属反应性	与反应: Human
免疫原	15 amino acid peptide from near the center of human Wnt10b (NP_003385).
阳性对照	Human skeletal muscle tissue lysate.
常规说明	<p>The Life Science industry has been in the grips of a reproducibility crisis for a number of years. Abcam is leading the way in addressing this with our range of recombinant monoclonal antibodies and knockout edited cell lines for gold-standard validation. Please check that this product meets your needs before purchasing.</p> <p>If you have any questions, special requirements or concerns, please send us an inquiry and/or contact our Support team ahead of purchase. Recommended alternatives for this product can be found below, along with publications, customer reviews and Q&As</p>

性能

形式	Liquid
存放说明	Shipped at 4°C. Store at +4°C.
存储溶液	pH: 7.2 Preservative: 0.02% Sodium azide Constituent: PBS
纯度	Immunogen affinity purified
克隆	多克隆
同种型	IgG

应用

The Abpromise guarantee

Abpromise™ 承诺保证使用ab70816于以下的经测试应用

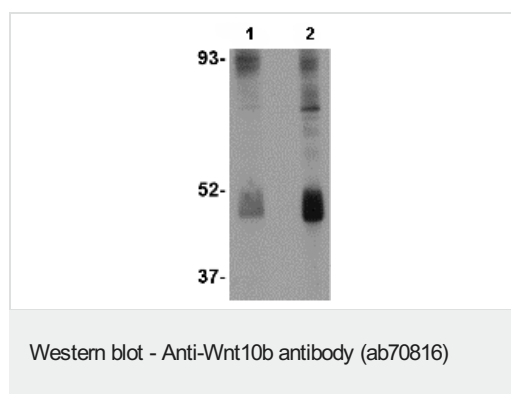
“应用说明”部分 下显示的仅为推荐的起始稀释度;实际最佳的稀释度/浓度应由使用者检定。

应用	Ab评论	说明
ICC/IF		Use a concentration of 5 µg/ml.
IHC-P		Use a concentration of 2.5 µg/ml.
WB	★★★★☆ (2)	Use a concentration of 2 - 4 µg/ml. Detects a band of approximately 47 kDa (predicted molecular weight: 43 kDa).

靶标

功能	Ligand for members of the frizzled family of seven transmembrane receptors. Probable developmental protein. May be a signaling molecule which affects the development of discrete regions of tissues. Is likely to signal over only few cell diameters.
组织特异性	Detected in most adult tissues. Highest levels were found in heart and skeletal muscle. Low levels are found in brain.
疾病相关	Defects in WNT10B are the cause of split-hand/foot malformation type 6 (SHFM6) [MIM:225300]. SHFM is a limb malformation involving the central rays of the autopod and presenting with syndactyly, median clefts of the hands and feet, and aplasia and/or hypoplasia of the phalanges, metacarpals, and metatarsals. SHFM6 is a autosomal recessive disorder.
序列相似性	Belongs to the Wnt family.
发展阶段	Infant brain has higher levels of WNT10B than adult brain.
细胞定位	Secreted > extracellular space > extracellular matrix.

图片



Lane 1 : Anti-Wnt10b antibody (ab70816) at 2 µg/ml

Lane 2 : Anti-Wnt10b antibody (ab70816) at 4 µg/ml

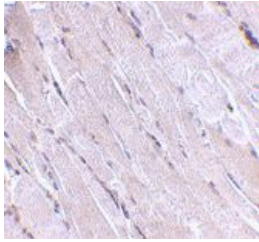
All lanes : Human skeletal muscle tissue lysate

Lysates/proteins at 15 µg per lane.

Predicted band size: 43 kDa

Observed band size: 47 kDa

Additional bands at: 93 kDa. We are unsure as to the identity of these extra bands.



Immunohistochemistry (Formalin/PFA-fixed paraffin-embedded sections) - Anti-Wnt10b antibody (ab70816)

ab70816 at 2.5 µ/ml staining Wnt10 in human skeletal muscle tissue section by Immunohistochemistry (Formalin/ PFA fixed paraffin-embedded tissue sections).

Immunocytochemistry/ Immunofluorescence - Anti-Wnt10b antibody (ab70816)

ICC/IF image of ab70816 stained HeLa cells. The cells were 4% formaldehyde fixed (10 min) and then incubated in 1%BSA / 10% normal goat serum / 0.3M glycine in 0.1% PBS-Tween for 1h to permeabilise the cells and block non-specific protein-protein interactions. The cells were then incubated with the antibody (ab70816, 5µg/ml) overnight at +4°C. The secondary antibody (green) was **ab96899**, DyLight® 488 goat anti-rabbit IgG (H+L) used at a 1/250 dilution for 1h. Alexa Fluor® 594 WGA was used to label plasma membranes (red) at a 1/200 dilution for 1h. DAPI was used to stain the cell nuclei (blue) at a concentration of 1.43µM.

Please note: All products are "FOR RESEARCH USE ONLY. NOT FOR USE IN DIAGNOSTIC PROCEDURES"

Our Abpromise to you: Quality guaranteed and expert technical support

- Replacement or refund for products not performing as stated on the datasheet
- Valid for 12 months from date of delivery
- Response to your inquiry within 24 hours
- We provide support in Chinese, English, French, German, Japanese and Spanish
- Extensive multi-media technical resources to help you
- We investigate all quality concerns to ensure our products perform to the highest standards

If the product does not perform as described on this datasheet, we will offer a refund or replacement. For full details of the Abpromise, please visit <https://www.abcam.cn/abpromise> or contact our technical team.

Terms and conditions

- Guarantee only valid for products bought direct from Abcam or one of our authorized distributors