

# Anti-Wnt10a antibody ab62051

**4 References**   [4 图像](#)

### 概述

产品名称	Anti-Wnt10a抗体
描述	兔多克隆抗体to Wnt10a
宿主	Rabbit
经测试应用	适用于: IHC-P
种属反应性	与反应: Human
免疫原	Synthetic peptide corresponding to Wnt10a (internal sequence) conjugated to Keyhole Limpet Haemocyanin (KLH).
常规说明	<p>The Life Science industry has been in the grips of a reproducibility crisis for a number of years. Abcam is leading the way in addressing this with our range of recombinant monoclonal antibodies and knockout edited cell lines for gold-standard validation. Please check that this product meets your needs before purchasing.</p> <p>If you have any questions, special requirements or concerns, please send us an inquiry and/or contact our Support team ahead of purchase. Recommended alternatives for this product can be found below, along with publications, customer reviews and Q&amp;As</p>

### 性能

形式	Liquid
存放说明	Shipped at 4°C. Store at +4°C short term (1-2 weeks). Upon delivery aliquot. Store at -20°C or -80°C. Avoid freeze / thaw cycle.
存储溶液	<p>pH: 7.70</p> <p>Preservative: 0.1% Sodium azide</p> <p>Constituent: PBS</p>
纯度	Immunogen affinity purified
克隆	多克隆
同种型	IgG

### 应用

**The Abpromise guarantee**

**Abpromise™** 承诺保证使用ab62051于以下的经测试应用

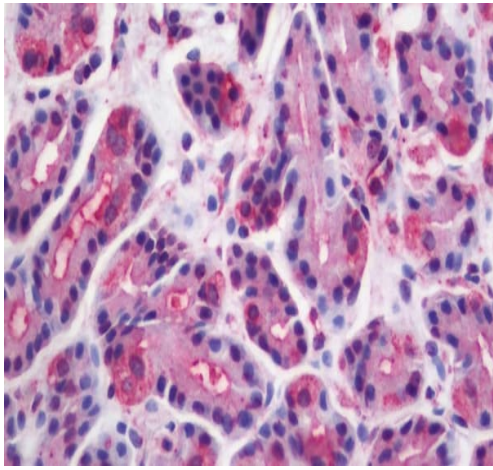
“应用说明”部分 下显示的仅为推荐的起始稀释度;实际最佳的稀释度/浓度应由使用者检定。

应用	Ab评论	说明
IHC-P		Use a concentration of 10 µg/ml.

## 靶标

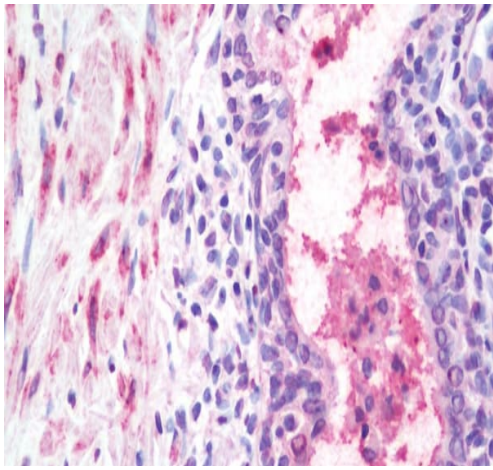
功能	Ligand for members of the frizzled family of seven transmembrane receptors. Probable developmental protein. May be a signaling molecule important in CNS development. Is likely to signal over only few cell diameters.
疾病相关	<p>Defects in WNT10A are a cause of ectodermal dysplasia anhidrotic (EDA) [MIM:224900]; also known ectodermal dysplasia hypohidrotic autosomal recessive (HED). Ectodermal dysplasia defines a heterogeneous group of disorders due to abnormal development of two or more ectodermal structures. EDA is characterized by sparse hair (atrachosis or hypotrichosis), abnormal or missing teeth and the inability to sweat due to the absence of sweat glands. Note=Most patients carrying WNT10A mutations present with sweating anomalies. However, comparison with EDA cases harboring mutations in the ectodysplasin pathway identifies some phenotypic differences. Dermatological features (anomalies of hair and sweat glands) are less severe in patients carrying WNT10A mutations and facial dysmorphism can be absent. The dental phenotype consists in microdontia, whereas teeth agenesis is more frequent in patients carrying mutations in the ectodysplasin pathway.</p> <p>Defects in WNT10A are a cause of odonto-oncho-dermal dysplasia (OODD) [MIM:257980]. OODD is a rare autosomal recessive ectodermal dysplasia in which the presenting phenotype is dry hair, severe hypodontia, smooth tongue with marked reduction of fungiform and filiform papillae, onychodysplasia, keratoderma and hyperhidrosis of palms and soles, and hyperkeratosis of the skin.</p> <p>Defects in WNT10A are a cause of Schopf-Schulz-Passarge syndrome (SSPS) [MIM:224750]. SSPS is rare ectodermal dysplasia, characterized chiefly by cysts of the eyelid margins, palmoplantar keratoderma, hypodontia, hypotrichosis and nail dystrophy. Multiple eyelid apocrine hidrocystomas are the hallmark of this condition, although they usually appear in adulthood. The concomitant presence of eccrine syringofibroadenoma in most patients and of other adnexal skin tumors in some affected subjects indicates that Schopf-Schulz-Passarge syndrome is a genodermatosis with skin appendage neoplasms.</p>
序列相似性	Belongs to the Wnt family.
细胞定位	Secreted > extracellular space > extracellular matrix.

## 图片



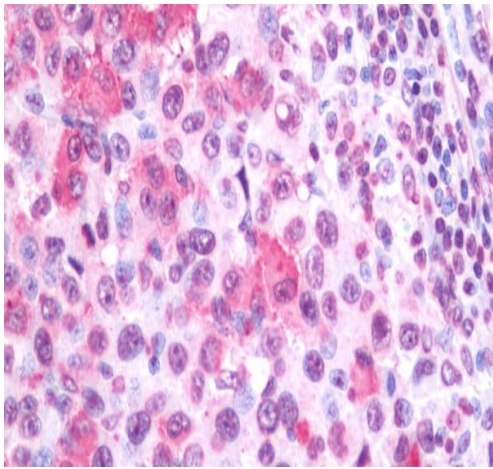
Immunohistochemistry (Formalin/PFA-fixed paraffin-embedded sections) - Anti-Wnt10a antibody (ab62051)

Immunohistochemistry (Formalin/PFA-fixed paraffin-embedded sections) analysis of human stomach tissue sections labelling Wnt10a with ab62051.



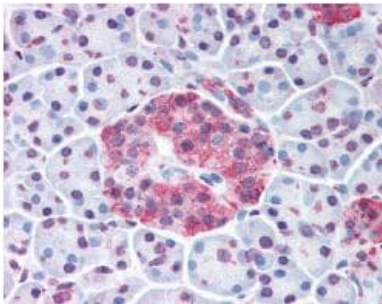
Immunohistochemistry (Formalin/PFA-fixed paraffin-embedded sections) - Anti-Wnt10a antibody (ab62051)

Immunohistochemistry (Formalin/PFA-fixed paraffin-embedded sections) analysis of human prostate tissue sections labelling Wnt10a with ab62051.



Immunohistochemistry (Formalin/PFA-fixed paraffin-embedded sections) - Anti-Wnt10a antibody (ab62051)

Immunohistochemistry (Formalin/PFA-fixed paraffin-embedded sections) analysis of human melanoma (lymph node) tissue sections labelling Wnt10a with ab62051.



Immunohistochemistry (Formalin/PFA-fixed paraffin-embedded sections) - Anti-Wnt10a antibody (ab62051)

ab62051, at 10µg/ml, staining Wnt10a in Formalin Fixed Paraffin Embedded Human Pancreatic Islets tissue by Immunohistochemistry.

**Please note:** All products are "FOR RESEARCH USE ONLY. NOT FOR USE IN DIAGNOSTIC PROCEDURES"

### Our Abpromise to you: Quality guaranteed and expert technical support

- Replacement or refund for products not performing as stated on the datasheet
- Valid for 12 months from date of delivery
- Response to your inquiry within 24 hours
- We provide support in Chinese, English, French, German, Japanese and Spanish
- Extensive multi-media technical resources to help you
- We investigate all quality concerns to ensure our products perform to the highest standards

If the product does not perform as described on this datasheet, we will offer a refund or replacement. For full details of the Abpromise, please visit <https://www.abcam.cn/abpromise> or contact our technical team.

#### **Terms and conditions**

---

- Guarantee only valid for products bought direct from Abcam or one of our authorized distributors