


Anti-WNK1 antibody ab35069

2 图像

概述

| | |
|-------|---|
| 产品名称 | Anti-WNK1抗体 |
| 描述 | 兔多克隆抗体to WNK1 |
| 宿主 | Rabbit |
| 特异性 | From Jan 2024, QC testing of replenishment batches of this polyclonal changed. All tested and expected application and reactive species combinations are still covered by our Abcam product promise. However, we no longer test all applications. For more information on a specific batch, please contact our Scientific Support who will be happy to help. You may also be interested in our alternative recombinant antibody, ab174854 . |
| 经测试应用 | 适用于: WB, ICC/IF |
| 种属反应性 | 与反应: Human 预测可用于: Mouse, Rat, Xenopus laevis  |
| 免疫原 | Synthetic peptide conjugated to KLH derived from within residues 2350 to the C-terminus of Human WNK1. 参阅Abcam的专有抗源政策(Peptide available as ab36094 .) |
| 阳性对照 | This antibody gave a positive signal in the following whole cell lysates: HeLa (Human epithelial carcinoma cell line) Jurkat (Human T cell lymphoblast-like cell line) A431 (Human epithelial carcinoma cell line) HEK293 (Human embryonic kidney cell line) HepG2 (Human hepatocellular liver carcinoma cell line) MCF7 (Human breast adenocarcinoma cell line) SHSY-5Y (Human neuroblastoma cell line) |
| 常规说明 | <p>The Life Science industry has been in the grips of a reproducibility crisis for a number of years. Abcam is leading the way in addressing this with our range of recombinant monoclonal antibodies and knockout edited cell lines for gold-standard validation. Please check that this product meets your needs before purchasing.</p> <p>If you have any questions, special requirements or concerns, please send us an inquiry and/or contact our Support team ahead of purchase. Recommended alternatives for this product can be found below, along with publications, customer reviews and Q&As</p> |

性能

| | |
|------|--|
| 形式 | Liquid |
| 存放说明 | Shipped at 4°C. Store at +4°C short term (1-2 weeks). Upon delivery aliquot. Store at -20°C or -80°C. Avoid freeze / thaw cycle. |

存储溶液 pH: 7.40
Preservative: 0.02% Sodium azide
Constituent: PBS

Batches of this product that have a concentration < 1mg/ml may have BSA added as a stabilising agent. If you would like information about the formulation of a specific lot, please contact our scientific support team who will be happy to help.

纯度 Immunogen affinity purified

克隆 多克隆

同种型 IgG

应用

The Abpromise guarantee **Abpromise™**承诺保证使用ab35069于以下的经测试应用

“应用说明”部分 下显示的仅为推荐的起始稀释度;实际最佳的稀释度/浓度应由使用者检定。

| 应用 | Ab评论 | 说明 |
|---------------|------|---|
| WB | | 1/250. Detects a band of approximately 200 kDa (predicted molecular weight: 250 kDa). |
| ICC/IF | | Use a concentration of 5 µg/ml. |

靶标

功能 Serine/threonine kinase which plays an important role in the regulation of electrolyte homeostasis, cell signaling, survival, and proliferation. Acts as an activator and inhibitor of sodium-coupled chloride cotransporters and potassium-coupled chloride cotransporters respectively. Activates SCNN1A, SCNN1B, SCNN1D and SGK1. Controls sodium and chloride ion transport by inhibiting the activity of WNK4, by either phosphorylating the kinase or via an interaction between WNK4 and the autoinhibitory domain of WNK1. WNK4 regulates the activity of the thiazide-sensitive Na-Cl cotransporter, SLC12A3, by phosphorylation. WNK1 may also play a role in actin cytoskeletal reorganization. Phosphorylates NEDD4L. Acts as a scaffold to inhibit SLC4A4, SLC26A6 as well as CFTR activities and surface expression, recruits STK39 which mediates the inhibition.

组织特异性 Widely expressed, with highest levels observed in the testis, heart, kidney and skeletal muscle. Isoform 3 is kidney-specific and specifically expressed in the distal convoluted tubule (DCT) and connecting tubule (CNT) of the nephron.

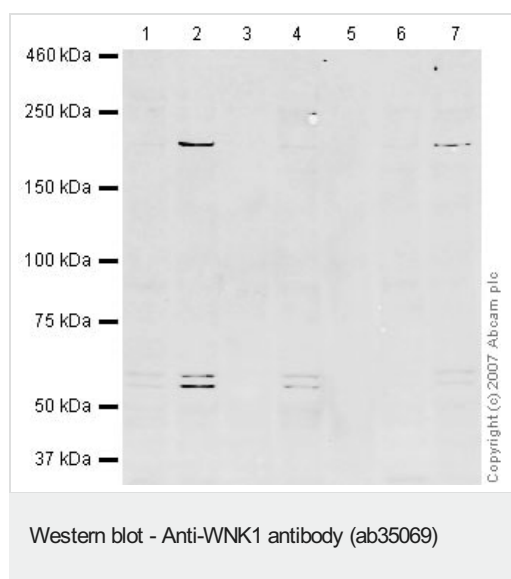
疾病相关 Pseudohypoaldosteronism 2C
Neuropathy, hereditary sensory and autonomic, 2A

序列相似性 Belongs to the protein kinase superfamily. Ser/Thr protein kinase family. WNK subfamily. Contains 1 protein kinase domain.

翻译后修饰 O-glycosylated.
Ubiquitinated in vitro by the BCR(KLHL3) complex and in vivo by a BCR(KLHL2) complex, leading to proteasomal degradation.

细胞定位 Cytoplasm.

图片



All lanes : Anti-WNK1 antibody (ab35069) at 1/250 dilution

Lane 1 : HeLa (Human epithelial carcinoma cell line) Whole Cell Lysate

Lane 2 : Jurkat whole cell lysate ([ab7899](#))

Lane 3 : A-431 whole cell lysate ([ab7909](#))

Lane 4 : HEK-293 whole cell lysate ([ab7902](#))

Lane 5 : Hep G2 whole cell lysate ([ab7900](#))

Lane 6 : MCF7 (Human breast adenocarcinoma cell line) Whole Cell Lysate

Lane 7 : SHSY-5Y (Human neuroblastoma cell line) Whole Cell Lysate

Lysates/proteins at 10 µg per lane.

Secondary

All lanes : IRDye 680 Conjugated Goat Anti-Rabbit IgG (H+L) at 1/10000 dilution

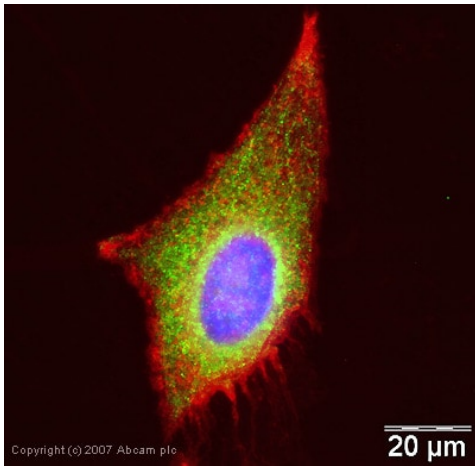
Performed under reducing conditions.

Predicted band size: 250 kDa

Observed band size: 200 kDa

Additional bands at: 55 kDa, 60 kDa. We are unsure as to the identity of these extra bands.

The band observed at 200 kDa could potentially be isoform 4 of the protein which has a predicted molecular weight of 206 kDa (Swiss-Prot data).



Immunocytochemistry/ Immunofluorescence - Anti-WNK1 antibody (ab35069)

ICC/IF image of ab35069 stained human HeLa cells. The cells were methanol fixed (5 min) and incubated with the antibody (ab35069, 5 μ g/ml) for 1h at room temperature. The secondary antibody (green) was Alexa Fluor[®] 488 goat anti-rabbit IgG (H+L) used at a 1/1000 dilution for 1h. Image-iT[™] FX Signal Enhancer was used to quench autofluorescence. 5% BSA (in TBS-T) was used for all other blocking steps. DAPI was used to stain the cell nuclei (blue). Alexa Fluor[®] 594 WGA was used to label plasma membranes (red).

Please note: All products are "FOR RESEARCH USE ONLY. NOT FOR USE IN DIAGNOSTIC PROCEDURES"

Our Abpromise to you: Quality guaranteed and expert technical support

- Replacement or refund for products not performing as stated on the datasheet
- Valid for 12 months from date of delivery
- Response to your inquiry within 24 hours
- We provide support in Chinese, English, French, German, Japanese and Spanish
- Extensive multi-media technical resources to help you
- We investigate all quality concerns to ensure our products perform to the highest standards

If the product does not perform as described on this datasheet, we will offer a refund or replacement. For full details of the Abpromise, please visit <https://www.abcam.cn/abpromise> or contact our technical team.

Terms and conditions

- Guarantee only valid for products bought direct from Abcam or one of our authorized distributors