

Anti-WIP1 antibody ab139722

1 图像

概述

产品名称	Anti-WIP1抗体
描述	兔多克隆抗体to WIP1
宿主	Rabbit
特异性	At least two isoforms of WIP1 are known to exist; ab139722 will detect both isoforms.
经测试应用	适用于: WB
种属反应性	与反应: Rat
免疫原	Synthetic peptide corresponding to 17 amino acid residues near the carboxy terminus of Human WIP1 (NP_060453).
阳性对照	WB: Rat colon tissue lysate.
常规说明	<p>The Life Science industry has been in the grips of a reproducibility crisis for a number of years. Abcam is leading the way in addressing this with our range of recombinant monoclonal antibodies and knockout edited cell lines for gold-standard validation. Please check that this product meets your needs before purchasing.</p> <p>If you have any questions, special requirements or concerns, please send us an inquiry and/or contact our Support team ahead of purchase. Recommended alternatives for this product can be found below, along with publications, customer reviews and Q&As</p>

性能

形式	Liquid
存放说明	Shipped at 4°C. Store at -20°C or -80°C. Avoid freeze / thaw cycle. Store undiluted.
存储溶液	<p>pH: 7.2</p> <p>Preservative: 0.02% Sodium azide</p> <p>Constituent: 99% PBS</p>
纯度	Immunogen affinity purified
克隆	多克隆
同种型	IgG

应用

The Abpromise guarantee

Abpromise™ 承诺保证使用 ab139722 于以下的经测试应用

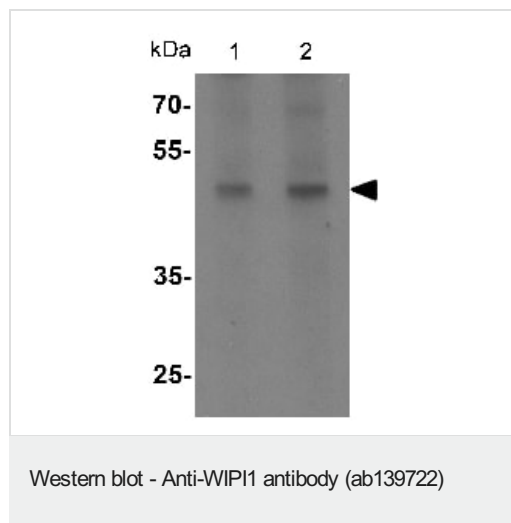
“应用说明”部分 下显示的仅为推荐的起始稀释度;实际最佳的稀释度/浓度应由使用者检定。

应用	Ab 评论	说明
WB		Use a concentration of 1 - 2 µg/ml. Predicted molecular weight: 49 kDa.

靶标

功能	May play a role in autophagy. May regulate the trafficking of proteins involved in the mannose-6-phosphate receptor (MPR) recycling pathway.
组织特异性	Ubiquitously expressed. Highly expressed in skeletal muscle, heart, testis, pancreas and placenta. Highly expressed in G361, Sk-mel-28, Sk-mel-13, WM852 and WM451 cells. Up-regulated in a variety of tumor tissues.
序列相似性	Belongs to the WD repeat SVP1 family. Contains 3 WD repeats.
细胞定位	Golgi apparatus > trans-Golgi network. Endosome. Cytoplasmic vesicle > clathrin-coated vesicle. Trans elements of the Golgi and peripheral endosomes. Dynamically cycles through these compartments and is susceptible to conditions that modulate membrane flux. Enriched in clathrin-coated vesicles.

图片



Lane 1 : Anti-WIP1 antibody (ab139722) at 1 µg/ml

Lane 2 : Anti-WIP1 antibody (ab139722) at 2 µg/ml

Lane 1 : Rat colon tissue lysate

Lane 2 : Rat colon tissue lysate

Lysates/proteins at 15 µg per lane.

Predicted band size: 49 kDa

Please note: All products are "FOR RESEARCH USE ONLY. NOT FOR USE IN DIAGNOSTIC PROCEDURES"

Our Abpromise to you: Quality guaranteed and expert technical support

- Replacement or refund for products not performing as stated on the datasheet
- Valid for 12 months from date of delivery
- Response to your inquiry within 24 hours

- We provide support in Chinese, English, French, German, Japanese and Spanish
- Extensive multi-media technical resources to help you
- We investigate all quality concerns to ensure our products perform to the highest standards

If the product does not perform as described on this datasheet, we will offer a refund or replacement. For full details of the Abpromise, please visit <https://www.abcam.cn/abpromise> or contact our technical team.

Terms and conditions

- Guarantee only valid for products bought direct from Abcam or one of our authorized distributors