

# Anti-WHAMM antibody ab122572

[2 References](#) [5 图像](#)

### 概述

产品名称	Anti-WHAMM抗体
描述	兔多克隆抗体to WHAMM
宿主	Rabbit
经测试应用	适用于: IHC-P, WB, ICC
种属反应性	与反应: Human
免疫原	antigen sequence: RALSSSSQAA THQNLGFRAP VKDDQPRPLV CESP AERPRD SLESFSCPGS MDEVLASLRH GRAPLRKVEV PAVRPPHASI NEHILAAIR, corresponding to internal sequence amino acids 660-748 of Human WHAMM. <a href="#">Run BLAST with ExpASY</a> <a href="#">Run BLAST with NCBI</a>
阳性对照	IHC-P: Human endometrium, placenta, and lymph node tissues; ICC: A431 cells; WB: U-138 MG cell lysate.
常规说明	<p>The Life Science industry has been in the grips of a reproducibility crisis for a number of years. Abcam is leading the way in addressing this with our range of recombinant monoclonal antibodies and knockout edited cell lines for gold-standard validation. Please check that this product meets your needs before purchasing.</p> <p>If you have any questions, special requirements or concerns, please send us an inquiry and/or contact our Support team ahead of purchase. Recommended alternatives for this product can be found below, along with publications, customer reviews and Q&amp;As</p>

### 性能

形式	Liquid
存放说明	Shipped at 4°C. Store at -20°C or -80°C. Avoid freeze / thaw cycle. Store undiluted.
存储溶液	pH: 7.20 Preservative: 0.02% Sodium azide Constituents: 59% PBS, 40% Glycerol (glycerin, glycerine)
纯度	Immunogen affinity purified
克隆	多克隆
同种型	IgG

## 应用

**The Abpromise guarantee**      **Abpromise™**承诺保证使用ab122572于以下的经测试应用

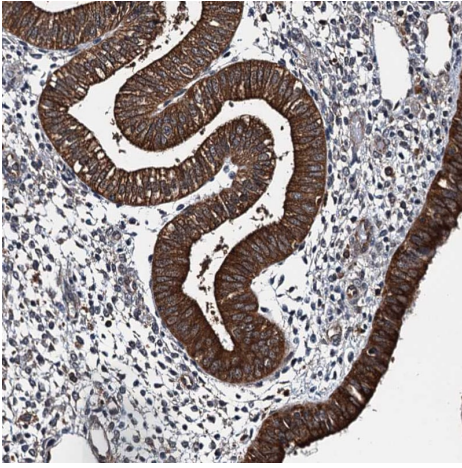
“应用说明”部分 下显示的仅为推荐的起始稀释度;实际最佳的稀释度/浓度应由使用者检定。

应用	Ab评论	说明
IHC-P		1/200 - 1/500. Perform heat mediated antigen retrieval with citrate buffer pH 6 before commencing with IHC staining protocol.
WB		Use a concentration of 0.04 - 0.4 µg/ml.
ICC		Use a concentration of 0.25 - 2 µg/ml.

## 靶标

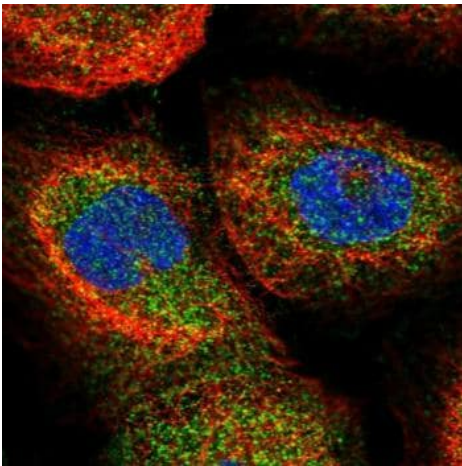
<b>功能</b>	Acts as a nucleation-promoting factor (NPF) that stimulates Arp2/3-mediated actin polymerization both at the Golgi apparatus and along tubular membranes. Involved as a regulator of Golgi positioning and morphology. Participates in vesicle transport between the reticulum endoplasmic and the Golgi complex.
<b>组织特异性</b>	Expressed in brain, lung, heart, colon and kidney (at protein level).
<b>序列相似性</b>	Contains 2 WH2 domains.
<b>结构域</b>	The N-terminal region associates with membranes, the coiled-coil region binds to microtubules and the WH2 domains promotes actin nucleation.
<b>细胞定位</b>	Cytoplasm. Endoplasmic reticulum-Golgi intermediate compartment. Cytoplasmic vesicle membrane. Golgi apparatus > cis-Golgi network. Localized to a perinuclear compartment near the microtubule-organizing center (MTOC). Also detected on tubulo-vesicular structures in the cell periphery that frequently localized along microtubules.

## 图片



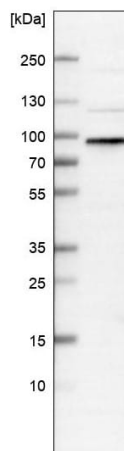
Immunohistochemistry (Formalin/PFA-fixed paraffin-embedded sections) - Anti-WHAMM antibody (ab122572)

Immunohistochemistry (Formalin/PFA-fixed paraffin-embedded sections) analysis of human endometrium tissue labelling WHAMM with ab122572 at 1/200 dilution. Heat mediated antigen retrieval performed with citrate buffer pH 6 before commencing with IHC staining protocol.



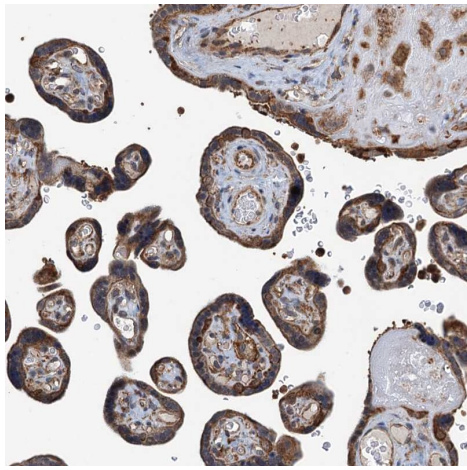
Immunocytochemistry - Anti-WHAMM antibody (ab122572)

ab122572, at 4  $\mu\text{g/ml}$ , staining WHAMM in PFA/Triton X-100 fixed/permeabilized A431 cells by Immunofluorescence (green).



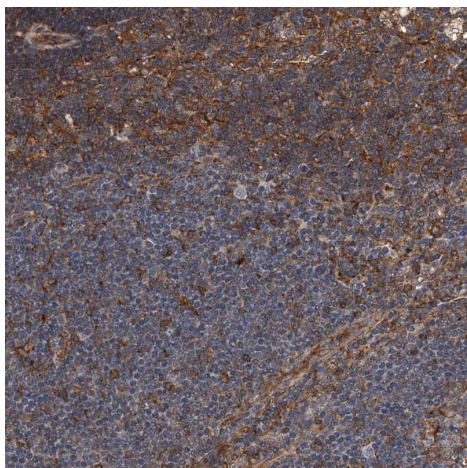
Western blot - Anti-WHAMM antibody (ab122572)

Anti-WHAMM antibody (ab122572) at 0.4  $\mu\text{g/ml}$  + U-138 MG (human brain glioblastoma cell line) cell lysate



Immunohistochemistry (Formalin/PFA-fixed paraffin-embedded sections) - Anti-WHAMM antibody (ab122572)

Immunohistochemistry (Formalin/PFA-fixed paraffin-embedded sections) analysis of human placenta tissue labelling WHAMM with ab122572 at 1/200 dilution. Heat mediated antigen retrieval performed with citrate buffer pH 6 before commencing with IHC staining protocol.



Immunohistochemistry (Formalin/PFA-fixed paraffin-embedded sections) - Anti-WHAMM antibody (ab122572)

Immunohistochemistry (Formalin/PFA-fixed paraffin-embedded sections) analysis of human lymph node tissue labelling WHAMM with ab122572 at 1/200 dilution. Heat mediated antigen retrieval performed with citrate buffer pH 6 before commencing with IHC staining protocol.

**Please note:** All products are "FOR RESEARCH USE ONLY. NOT FOR USE IN DIAGNOSTIC PROCEDURES"

### Our Abpromise to you: Quality guaranteed and expert technical support

---

- Replacement or refund for products not performing as stated on the datasheet
- Valid for 12 months from date of delivery
- Response to your inquiry within 24 hours
- We provide support in Chinese, English, French, German, Japanese and Spanish
- Extensive multi-media technical resources to help you
- We investigate all quality concerns to ensure our products perform to the highest standards

If the product does not perform as described on this datasheet, we will offer a refund or replacement. For full details of the Abpromise,

please visit <https://www.abcam.cn/abpromise> or contact our technical team.

## **Terms and conditions**

---

- Guarantee only valid for products bought direct from Abcam or one of our authorized distributors