

Anti-WDR91 antibody ab80614

3 图像

概述

产品名称	Anti-WDR91抗体
描述	兔多克隆抗体to WDR91
宿主	Rabbit
经测试应用	适用于: WB, IP, IHC-P
种属反应性	与反应: Human 预测可用于: Rhesus monkey, Gorilla 
免疫原	Synthetic peptide corresponding to a region between residues 350 and 400 of human WDR91 (NP_054868.2).
阳性对照	HeLa whole cell lysate. 293T whole cell lysate.
常规说明	<p>The Life Science industry has been in the grips of a reproducibility crisis for a number of years. Abcam is leading the way in addressing this with our range of recombinant monoclonal antibodies and knockout edited cell lines for gold-standard validation. Please check that this product meets your needs before purchasing.</p> <p>If you have any questions, special requirements or concerns, please send us an inquiry and/or contact our Support team ahead of purchase. Recommended alternatives for this product can be found below, along with publications, customer reviews and Q&As</p>

性能

形式	Liquid
存放说明	Shipped at 4°C. Upon delivery aliquot and store at -20°C. Avoid freeze / thaw cycles.
存储溶液	pH: 7 Preservative: 0.09% Sodium azide Constituents: 1.815% Tris, 1.764% Sodium citrate, 0.021% PBS
纯度	Immunogen affinity purified
克隆	多克隆
同种型	IgG

应用

The Abpromise guarantee

Abpromise™ 承诺保证使用 ab80614 于以下的经测试应用

“应用说明”部分 下显示的仅为推荐的起始稀释度;实际最佳的稀释度/浓度应由使用者检定。

应用	Ab评论	说明
WB		1/2000 - 1/10000. Detects a band of approximately 83 kDa (predicted molecular weight: 83 kDa).
IP		Use at 2-5 µg/mg of lysate.
IHC-P		1/500 - 1/2000. Perform heat mediated antigen retrieval with citrate buffer pH 6 before commencing with IHC staining protocol.

靶标

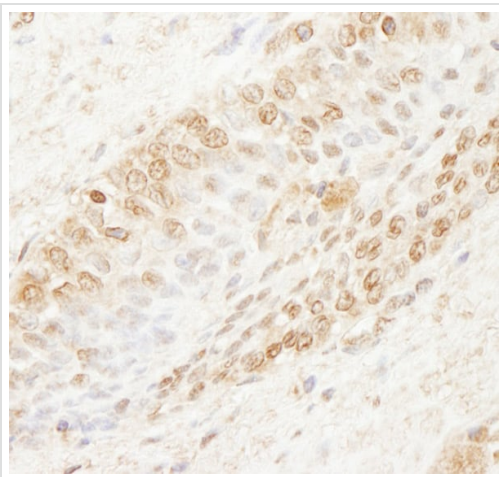
序列相似性

Contains 7 WD repeats.

翻译后修饰

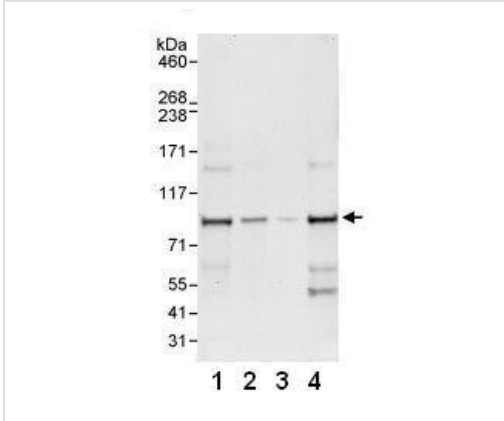
Phosphorylated upon DNA damage, probably by ATM or ATR.

图片



Immunohistochemistry (Formalin/PFA-fixed paraffin-embedded sections) analysis of human prostate carcinoma tissue labelling WDR91 with ab80614 at 1/1000 (1µg/ml). Detection: DAB.

Immunohistochemistry (Formalin/PFA-fixed paraffin-embedded sections) - Anti-WDR91 antibody (ab80614)



Western blot - Anti-WDR91 antibody (ab80614)

All lanes : Anti-WDR91 antibody (ab80614) at 0.1 µg/ml

Lane 1 : HeLa whole cell lysate at 50 µg

Lane 2 : HeLa whole cell lysate at 15 µg

Lane 3 : HeLa whole cell lysate at 5 µg

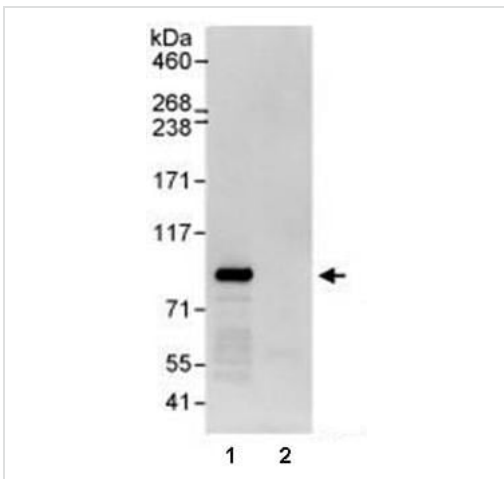
Lane 4 : 293T whole cell lysate at 50 µg

Developed using the ECL technique.

Predicted band size: 83 kDa

Observed band size: 83 kDa

Exposure time: 30 seconds



Immunoprecipitation - Anti-WDR91 antibody (ab80614)

Immunoprecipitation of HeLa whole cell lysates (1 mg for IP, 20% of IP loaded) using ab80614 at 3µg/mg lysate (lane 1) or control IgG (lane 2). Samples were analysed by Western blot using ab80614 at 1µg/ml and detected with chemiluminescence with an exposure time of 10 seconds.

Please note: All products are "FOR RESEARCH USE ONLY. NOT FOR USE IN DIAGNOSTIC PROCEDURES"

Our Abpromise to you: Quality guaranteed and expert technical support

- Replacement or refund for products not performing as stated on the datasheet

- Valid for 12 months from date of delivery
- Response to your inquiry within 24 hours

- We provide support in Chinese, English, French, German, Japanese and Spanish
- Extensive multi-media technical resources to help you
- We investigate all quality concerns to ensure our products perform to the highest standards

If the product does not perform as described on this datasheet, we will offer a refund or replacement. For full details of the Abpromise, please visit <https://www.abcam.cn/abpromise> or contact our technical team.

Terms and conditions

- Guarantee only valid for products bought direct from Abcam or one of our authorized distributors