

Anti-WDR77 antibody [EPR10708(B)] ab154190

重组 RabMAb

★★★★★ [2 Abreviews](#) [4 References](#) [6 图像](#)

概述

产品名称	Anti-WDR77抗体[EPR10708(B)]
描述	兔单克隆抗体[EPR10708(B)] to WDR77
宿主	Rabbit
特异性	The mouse and rat recommendation is based on the WB results. We do not guarantee IHC-P for mouse and rat.
经测试应用	适用于: Flow Cyt (Intra), WB, IHC-P, ICC/IF, IP
种属反应性	与反应: Mouse, Rat, Human
免疫原	Synthetic peptide. This information is proprietary to Abcam and/or its suppliers.
阳性对照	IHC-P: Human breast cancer and human testis tissue; ICC/IF: 293T cells; Flow Cyt (intra): HeLa cells. WB: HeLa, HEK-293 whole cell lysate. Mouse kidney and spleen lysate and Rat lysate.
常规说明	<p>This product is a recombinant monoclonal antibody, which offers several advantages including:</p> <ul style="list-style-type: none">- High batch-to-batch consistency and reproducibility- Improved sensitivity and specificity- Long-term security of supply- Animal-free production <p>For more information see here.</p> <p>Our RabMAb[®] technology is a patented hybridoma-based technology for making rabbit monoclonal antibodies. For details on our patents, please refer to RabMAb[®] patents.</p>

性能

形式	Liquid
存放说明	Shipped at 4°C. Store at +4°C short term (1-2 weeks). Upon delivery aliquot. Store at -20°C long term. Avoid freeze / thaw cycle.
存储溶液	pH: 7.20 Preservative: 0.01% Sodium azide Constituents: 59% PBS, 40% Glycerol (glycerin, glycerine), 0.05% BSA
纯度	Protein A purified
克隆	单克隆

克隆编号 EPR10708(B)

同种型 IgG

应用

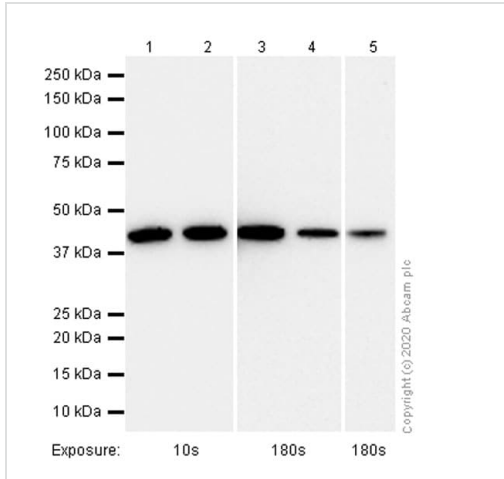
The Abpromise guarantee **Abpromise™**承诺保证使用ab154190于以下的经测试应用

“应用说明”部分下显示的仅为推荐的起始稀释度;实际最佳的稀释度/浓度应由使用者检定。

应用	Ab评论	说明
Flow Cyt (Intra)		1/30. For unpurified use at 1/100 - 1/10000. ab172730 - Rabbit monoclonal IgG, is suitable for use as an isotype control with this antibody.
WB	★★★★★ (1)	1/1000 - 1/10000. Predicted molecular weight: 37 kDa.
IHC-P		1/6000. Perform heat mediated antigen retrieval with citrate buffer pH 6 before commencing with IHC staining protocol. See IHC antigen retrieval protocols . For unpurified use at 1/50 - 1/100. The mouse and rat recommendation is based on the WB results. We do not guarantee IHC-P for mouse and rat.
ICC/IF	★★★★☆ (1)	1/50 - 1/250.
IP		Use at an assay dependent concentration.

靶标

功能	Non-catalytic component of the 20S PRMT5-containing methyltransferase complex, which modifies specific arginines to dimethylarginines in several spliceosomal Sm proteins. This modification targets Sm proteins to the survival of motor neurons (SMN) complex for assembly into small nuclear ribonucleoprotein core particles. Might play a role in transcription regulation. The 20S PRMT5-containing methyltransferase complex also methylates the Piwi proteins (PIWIL1, PIWIL2 and PIWIL4), methylation of Piwi proteins being required for the interaction with Tudor domain-containing proteins and subsequent localization to the meiotic nuage.
组织特异性	Highly expressed in heart, skeletal muscle, spleen, testis, uterus, prostate and thymus. In testis, expressed in germ cells and Leydig cells, but not in peritubular myocytes, nor in Sertoli cells. Expressed in prostate cancers, in seminomas and in Leydig cell tumors.
序列相似性	Contains 5 WD repeats.
发展阶段	Expressed in Leydig cells during fetal testicular development, especially during the second semester. Germ cells expression is detected as early as 10 weeks of gestation.
细胞定位	Nucleus. Cytoplasm. Nuclear in Leydig cells and cytoplasmic in germ cells during fetal testicular development. In adult testis, predominantly nuclear. Subcellular location varies from nuclear to cytoplasmic in various tumors.



Western blot - Anti-WDR77 antibody [EPR10708(B)] (ab154190)

All lanes : Anti-WDR77 antibody [EPR10708(B)] (ab154190) at 1/1000 dilution (Purified)

Lane 1 : HeLa (Human cervix adenocarcinoma epithelial cell) whole cell lysate

Lane 2 : HEK-293 (Human embryonic kidney epithelial cell) whole cell lysate

Lane 3 : Mouse spleen lysate

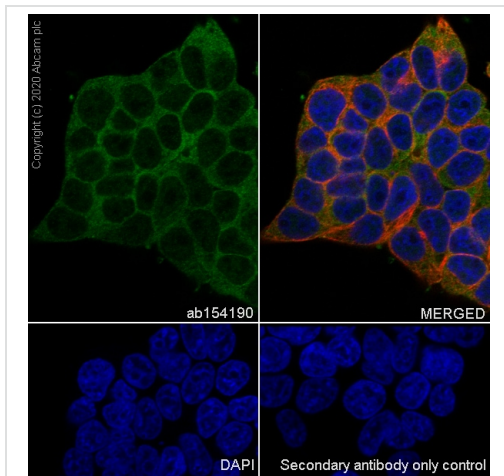
Lane 4 : Mouse kidney lysate

Lane 5 : Rat kidney lysate

Secondary

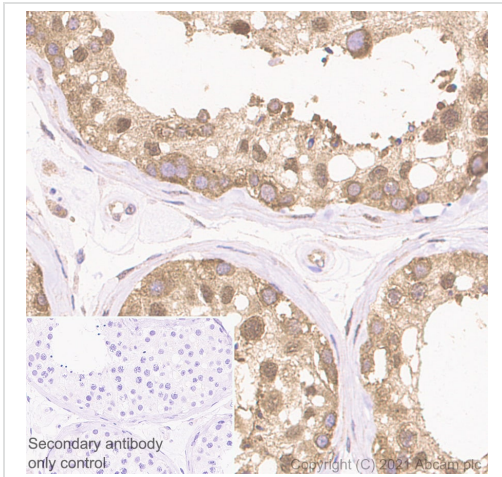
All lanes : Goat Anti-Rabbit IgG H&L (HRP) (**ab97051**) at 1/20000 dilution

Predicted band size: 37 kDa



Immunocytochemistry/ Immunofluorescence - Anti-WDR77 antibody [EPR10708(B)] (ab154190)

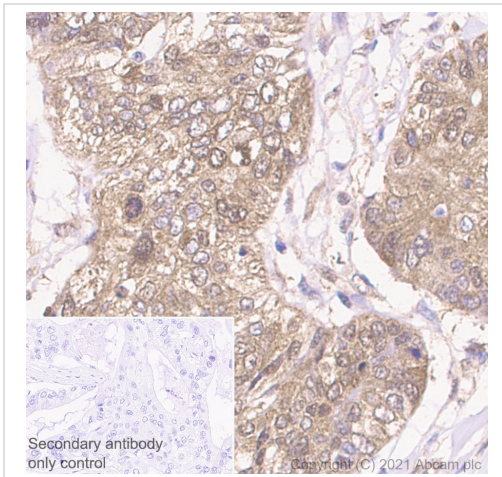
Immunocytochemistry analysis of 293T (Human embryonic kidney epithelial cell) cells labeling WDR77 with purified ab154190 at 1/50 dilution (5.58 µg/mL). Cells were fixed in 4% Paraformaldehyde and permeabilized with 0.1% tritonX-100. Cells were counterstained with Ab195889 Anti-alpha Tubulin antibody [DM1A] - Microtubule Marker (Alexa Fluor® 594) 1/200 (2.5 µg/mL). Goat anti rabbit IgG (Alexa Fluor® 488, **ab150077**) was used as the secondary antibody at 1/1000 (2 µg/mL) dilution. DAPI (blue) was used as nuclear counterstain. PBS instead of the primary antibody was used as the secondary antibody only control.



Immunohistochemistry (Formalin/PFA-fixed paraffin-embedded sections) - Anti-WDR77 antibody [EPR10708(B)] (ab154190)

Immunohistochemistry (Formalin/PFA-fixed paraffin-embedded sections) analysis of human testis tissue sections labeling WDR77 with purified ab154190 at 1/6000 dilution (0.05 µg/mL). Heat mediated antigen retrieval was performed using Heat mediated antigen retrieval using Bond™ Epitope Retrieval Solution 1 (pH 6.0). Tissue was counterstained with Hematoxylin. Rabbit specific IHC polymer detection kit HRP/DAB (**ab209101**) secondary antibody was used at 1/0 dilution. PBS instead of the primary antibody was used as the negative control.

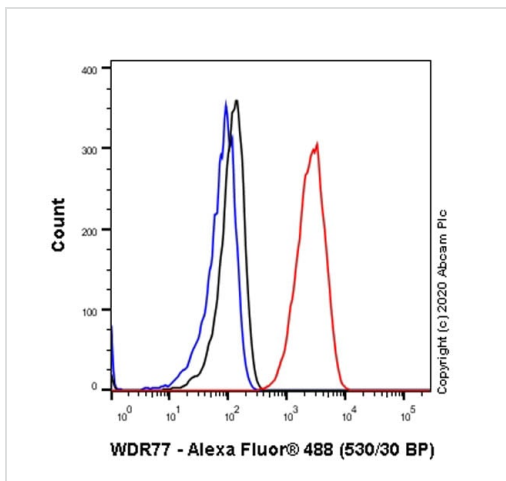
The immunostaining was performed on a Leica Biosystems BOND® RX instrument



Immunohistochemistry (Formalin/PFA-fixed paraffin-embedded sections) - Anti-WDR77 antibody [EPR10708(B)] (ab154190)

Immunohistochemistry (Formalin/PFA-fixed paraffin-embedded sections) analysis of human breast cancer tissue sections labeling WDR77 with purified ab154190 at 1/6000 dilution (0.05 µg/mL). Heat mediated antigen retrieval was performed using Heat mediated antigen retrieval using Bond™ Epitope Retrieval Solution 1 (pH 6.0). Tissue was counterstained with Hematoxylin. Rabbit specific IHC polymer detection kit HRP/DAB (**ab209101**) secondary antibody was used at 1/0 dilution. PBS instead of the primary antibody was used as the negative control.




The immunostaining was performed on a Leica Biosystems BOND® RX instrument



Flow Cytometry (Intracellular) - Anti-WDR77 antibody [EPR10708(B)] (ab154190)

Intracellular Flow Cytometry analysis of HeLa (Human cervix adenocarcinoma epithelial cell) cells labelling WDR77 with purified ab154190 at 1/30 dilution (10 µg/mL) (Red). Cells were fixed with 4% Paraformaldehyde and permeabilised with 90% Methanol. A Goat anti rabbit IgG (Alexa Fluor® 488, [ab150077](#)) secondary antibody was used at 1/2000. Isotype control - Rabbit monoclonal IgG (Black). Unlabelled control - Cell without incubation with primary antibody and secondary antibody (Blue).

Why choose a recombinant antibody?

 <p>Research with confidence Consistent and reproducible results</p>	 <p>Long-term and scalable supply Recombinant technology</p>
 <p>Success from the first experiment Confirmed specificity</p>	 <p>Ethical standards compliant Animal-free production</p>

Anti-WDR77 antibody [EPR10708(B)] (ab154190)

Please note: All products are "FOR RESEARCH USE ONLY. NOT FOR USE IN DIAGNOSTIC PROCEDURES"

Our Abpromise to you: Quality guaranteed and expert technical support

- Replacement or refund for products not performing as stated on the datasheet
- Valid for 12 months from date of delivery
- Response to your inquiry within 24 hours
- We provide support in Chinese, English, French, German, Japanese and Spanish
- Extensive multi-media technical resources to help you
- We investigate all quality concerns to ensure our products perform to the highest standards

If the product does not perform as described on this datasheet, we will offer a refund or replacement. For full details of the Abpromise,

please visit <https://www.abcam.cn/abpromise> or contact our technical team.

Terms and conditions

- Guarantee only valid for products bought direct from Abcam or one of our authorized distributors