


Anti-WDR26 antibody ab85961

2 References **1 图像**

概述

产品名称	Anti-WDR26抗体
描述	兔多克隆抗体to WDR26
宿主	Rabbit
经测试应用	适用于: WB
种属反应性	<p>与反应: Human</p> <p>预测可用于: Mouse, Rat, Rabbit, Horse, Chicken, Guinea pig, Cow, Dog, Turkey, Pig, Xenopus laevis, Chimpanzee, Rhesus monkey, Gorilla, Tilapia, Orangutan, Xenopus tropicalis, Medaka fish </p>
免疫原	<p>Synthetic peptide corresponding to Human WDR26 aa 150-250.</p> <p>Database link: Q9H7D7</p>
阳性对照	HeLa cell lysate
常规说明	<p>The Life Science industry has been in the grips of a reproducibility crisis for a number of years. Abcam is leading the way in addressing this with our range of recombinant monoclonal antibodies and knockout edited cell lines for gold-standard validation. Please check that this product meets your needs before purchasing.</p> <p>If you have any questions, special requirements or concerns, please send us an inquiry and/or contact our Support team ahead of purchase. Recommended alternatives for this product can be found below, along with publications, customer reviews and Q&As</p>

性能

形式	Liquid
存放说明	Shipped at 4°C. Upon delivery aliquot and store at -20°C. Avoid freeze / thaw cycles.
存储溶液	<p>pH: 7</p> <p>Preservative: 0.09% Sodium azide</p> <p>Constituent: Tris citrate/phosphate</p>
纯度	Immunogen affinity purified
纯化说明	Affinity purified using an epitope specific to WDR26 immobilized on solid support.
克隆	多克隆
同种型	IgG

应用

The Abpromise guarantee **Abpromise™**承诺保证使用ab85961于以下的经测试应用

“应用说明”部分 下显示的仅为推荐的起始稀释度;实际最佳的稀释度/浓度应由使用者检定。

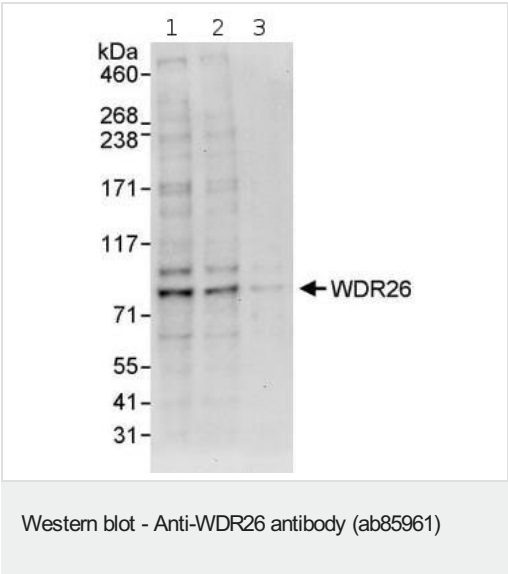
应用	Ab评论	说明
WB		Use a concentration of 0.4 µg/ml. Predicted molecular weight: 72 kDa.

靶标

相关性 The WDR26 gene encodes a member of the WD repeat protein family. WD repeats are minimally conserved regions of approximately 40 amino acids, which are typically bracketed by gly-his and trp-aspartic acid (GH-WD). WD repeats may facilitate formation of heterotrimeric or multiprotein complexes. Members of this family are involved in a variety of cellular processes, including cell cycle progression, signal transduction, apoptosis, and gene regulation. Two transcript variants encoding two different isoforms have been found for this gene.

细胞定位 Cytoplasmic

图片



All lanes : Anti-WDR26 antibody (ab85961) at 0.4 µg/ml

Lane 1 : HeLa whole cell lysate at 50 µg

Lane 2 : HeLa whole cell lysate at 15 µg

Lane 3 : HeLa whole cell lysate at 5 µg

Developed using the ECL technique.

Predicted band size: 72 kDa

Observed band size: 72 kDa

Exposure time: 30 seconds

Please note: All products are "FOR RESEARCH USE ONLY. NOT FOR USE IN DIAGNOSTIC PROCEDURES"

Our Abpromise to you: Quality guaranteed and expert technical support

- Replacement or refund for products not performing as stated on the datasheet
- Valid for 12 months from date of delivery
- Response to your inquiry within 24 hours
- We provide support in Chinese, English, French, German, Japanese and Spanish

- Extensive multi-media technical resources to help you
- We investigate all quality concerns to ensure our products perform to the highest standards

If the product does not perform as described on this datasheet, we will offer a refund or replacement. For full details of the Abpromise, please visit <https://www.abcam.cn/abpromise> or contact our technical team.

Terms and conditions

- Guarantee only valid for products bought direct from Abcam or one of our authorized distributors