

# Anti-WDR12 antibody ab111955

[2 References](#) [3 图像](#)

### 概述

---

<b>产品名称</b>	Anti-WDR12抗体
<b>描述</b>	兔多克隆抗体to WDR12
<b>宿主</b>	Rabbit
<b>经测试应用</b>	<b>适用于:</b> WB, ICC/IF
<b>种属反应性</b>	<b>与反应:</b> Mouse, Human
<b>免疫原</b>	Recombinant fragment, corresponding to a region within amino acids 1-259 of Human WDR12 (AAH08082).
<b>阳性对照</b>	293T, A431, Jurkat and Raji cells and whole cell lysates. Mouse brain lysate.
<b>常规说明</b>	<p>The Life Science industry has been in the grips of a reproducibility crisis for a number of years. Abcam is leading the way in addressing this with our range of recombinant monoclonal antibodies and knockout edited cell lines for gold-standard validation. Please check that this product meets your needs before purchasing.</p> <p>If you have any questions, special requirements or concerns, please send us an inquiry and/or contact our Support team ahead of purchase. Recommended alternatives for this product can be found below, along with publications, customer reviews and Q&amp;As</p>

### 性能

---

<b>形式</b>	Liquid
<b>存放说明</b>	Shipped at 4°C. Upon delivery aliquot and store at -20°C or -80°C. Avoid repeated freeze / thaw cycles.
<b>存储溶液</b>	pH: 7.00 Preservative: 0.01% Thimerosal (merthiolate) Constituents: 1.21% Tris, 0.75% Glycine, 20% Glycerol (glycerin, glycerine)
<b>纯度</b>	Immunogen affinity purified
<b>克隆</b>	多克隆
<b>同种型</b>	IgG

### 应用

---

## The Abpromise guarantee

**Abpromise™** 承诺保证使用 ab111955 于以下的经测试应用

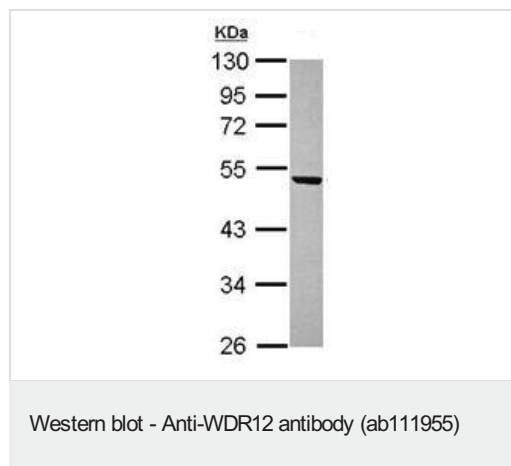
“应用说明”部分 下显示的仅为推荐的起始稀释度;实际最佳的稀释度/浓度应由使用者检定。

应用	Ab评论	说明
WB		1/500 - 1/3000. Predicted molecular weight: 48 kDa.
ICC/IF		1/100 - 1/500.

## 靶标

功能	Component of the PeBoW complex, which is required for maturation of 28S and 5.8S ribosomal RNAs and formation of the 60S ribosome.
序列相似性	Belongs to the WD repeat WDR12/YTM1 family. Contains 7 WD repeats.
细胞定位	Nucleus > nucleolus. Nucleus > nucleoplasm.

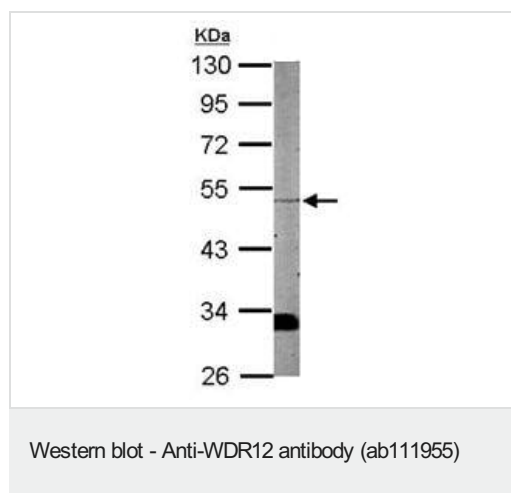
## 图片



Anti-WDR12 antibody (ab111955) at 1/1000 dilution + A431 whole cell lysate at 30 µg

**Predicted band size:** 48 kDa

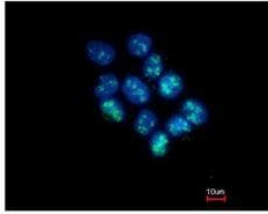
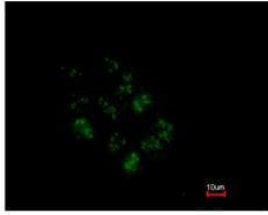
10% SDS PAGE



Anti-WDR12 antibody (ab111955) at 1/1000 dilution + Mouse brain lysate at 30 µg

**Predicted band size:** 48 kDa

10% SDS PAGE



Immunocytochemistry/ Immunofluorescence - Anti-WDR12 antibody (ab111955)

ab111955 at 1/200 dilution staining WDR12 in paraformaldehyde-fixed A431 cells by Immunofluorescence. The lower image is costained with Hoechst 33342.

**Please note:** All products are "FOR RESEARCH USE ONLY. NOT FOR USE IN DIAGNOSTIC PROCEDURES"

### Our Abpromise to you: Quality guaranteed and expert technical support

---

- Replacement or refund for products not performing as stated on the datasheet
- Valid for 12 months from date of delivery
- Response to your inquiry within 24 hours
- We provide support in Chinese, English, French, German, Japanese and Spanish
- Extensive multi-media technical resources to help you
- We investigate all quality concerns to ensure our products perform to the highest standards

If the product does not perform as described on this datasheet, we will offer a refund or replacement. For full details of the Abpromise, please visit <https://www.abcam.cn/abpromise> or contact our technical team.

### Terms and conditions

---

- Guarantee only valid for products bought direct from Abcam or one of our authorized distributors