


Anti-WASP/Wiskott-Aldrich syndrome protein (phospho Y290) antibody ab59278

[5 References](#) [2 图像](#)

概述

产品名称	Anti-WASP/Wiskott-Aldrich syndrome蛋白(phospho Y290)抗体
描述	兔多克隆抗体to WASP/Wiskott-Aldrich syndrome蛋白(phospho Y290)
宿主	Rabbit
经测试应用	适用于: ELISA, WB, IHC-P
种属反应性	与反应: Human 预测可用于: Mouse 
免疫原	Synthetic peptide corresponding to Human WASP/Wiskott-Aldrich syndrome protein aa 250-350 (phospho Y290). Database link: P42768
阳性对照	WB: Extracts from HepG2 cells. IHC-P: Human brain tissue.
常规说明	<p>The Life Science industry has been in the grips of a reproducibility crisis for a number of years. Abcam is leading the way in addressing this with our range of recombinant monoclonal antibodies and knockout edited cell lines for gold-standard validation. Please check that this product meets your needs before purchasing.</p> <p>If you have any questions, special requirements or concerns, please send us an inquiry and/or contact our Support team ahead of purchase. Recommended alternatives for this product can be found below, along with publications, customer reviews and Q&As</p>

性能

形式	Liquid
存放说明	Shipped at 4°C. Store at -20°C. Stable for 12 months at -20°C.
存储溶液	pH: 7.40 Preservative: 0.02% Sodium azide Constituents: PBS, 50% Glycerol (glycerin, glycerine), 0.87% Sodium chloride
	Without Mg+2 and Ca+2
纯度	Immunogen affinity purified
克隆	多克隆

同种型

IgG

应用

The Abpromise guarantee Abpromise™ 承诺保证使用ab59278于以下的经测试应用

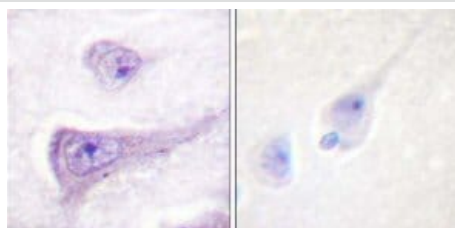
“应用说明”部分 下显示的仅为推荐的起始稀释度;实际最佳的稀释度/浓度应由使用者检定。

应用	Ab评论	说明
ELISA		Use at an assay dependent concentration.
WB		1/500 - 1/1000. Detects a band of approximately 60 kDa (predicted molecular weight: 53 kDa).
IHC-P		Use at an assay dependent concentration.

靶标

功能	Effector protein for Rho-type GTPases, providing a link with the Arp2/3 complex that regulates the structure and dynamics of the actin cytoskeleton. Important for efficient actin polymerization. Possible regulator of lymphocyte and platelet function.
组织特异性	Expressed predominantly in the thymus. Also found, to a much lesser extent, in the spleen.
疾病相关	Defects in WAS are the cause of Wiskott-Aldrich syndrome (WAS) [MIM:301000]; also known as eczema-thrombocytopenia-immunodeficiency syndrome. WAS is an X-linked recessive immunodeficiency characterized by eczema, thrombocytopenia, recurrent infections, and bloody diarrhea. Death usually occurs before age 10. Defects in WAS are the cause of thrombocytopenia type 1 (THC1) [MIM:313900]. Thrombocytopenia is defined by a decrease in the number of platelets in circulating blood, resulting in the potential for increased bleeding and decreased ability for clotting. Defects in WAS are a cause of neutropenia severe congenital X-linked (XLN) [MIM:300299]. XLN is an immunodeficiency syndrome characterized by recurrent major bacterial infections, severe congenital neutropenia, and monocytopenia.
序列相似性	Contains 1 CRIB domain. Contains 1 WH1 domain. Contains 1 WH2 domain.
结构域	The WH1 (Wasp homology 1) domain may bind a Pro-rich ligand. The CRIB (Cdc42/Rac-interactive-binding) region binds to the C-terminal WH2 domain in the autoinhibited state of the protein. Binding of Rho-type GTPases to the CRIB induces a conformation change and leads to activation.
细胞定位	Cytoplasm > cytoskeleton.

图片

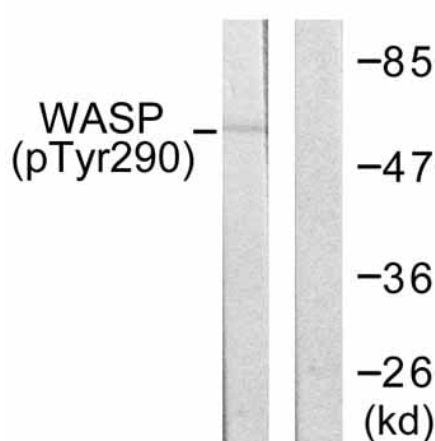


Immunohistochemistry (Formalin/PFA-fixed paraffin-embedded sections) - Anti-WASP/Wiskott-Aldrich syndrome protein (phospho Y290) antibody (ab59278)

Immunohistochemical analysis of paraffin-embedded human brain tissue using ab59278 at a dilution of 1/50.

Left image: no immunising peptide.

Right hand image: with immunising peptide.



Western blot - Anti-WASP/Wiskott-Aldrich syndrome protein (phospho Y290) antibody (ab59278)

All lanes : Anti-WASP/Wiskott-Aldrich syndrome protein (phospho Y290) antibody (ab59278) at 1/500 dilution

Lane 1 : Extracts from HepG2 cells with no immunising peptide

Lane 2 : Extracts from HepG2 cells with immunising peptide

Predicted band size: 53 kDa

Observed band size: 60 kDa

Please note: All products are "FOR RESEARCH USE ONLY. NOT FOR USE IN DIAGNOSTIC PROCEDURES"

Our Abpromise to you: Quality guaranteed and expert technical support

- Replacement or refund for products not performing as stated on the datasheet
- Valid for 12 months from date of delivery
- Response to your inquiry within 24 hours
- We provide support in Chinese, English, French, German, Japanese and Spanish
- Extensive multi-media technical resources to help you
- We investigate all quality concerns to ensure our products perform to the highest standards

If the product does not perform as described on this datasheet, we will offer a refund or replacement. For full details of the Abpromise, please visit <https://www.abcam.cn/abpromise> or contact our technical team.

Terms and conditions

- Guarantee only valid for products bought direct from Abcam or one of our authorized distributors