


Anti-WASP/Wiskott-Aldrich syndrome protein antibody [EPR2540Y] ab68182

重组 RabMAb

2 References **2 图像**

概述

产品名称	Anti-WASP/Wiskott-Aldrich syndrome蛋白抗体[EPR2540Y]
描述	兔单克隆抗体[EPR2540Y] to WASP/Wiskott-Aldrich syndrome蛋白
宿主	Rabbit
经测试应用	适用于: WB 不适用于: IHC-P
种属反应性	与反应: Human 预测可用于: Mouse, Rat 
免疫原	Synthetic peptide within Human WASP/Wiskott-Aldrich syndrome protein aa 1-100 (N terminal). The exact sequence is proprietary.
阳性对照	TF1, U937 and Jurkat whole cell lysate (ab7899).
常规说明	<p>This product is a recombinant monoclonal antibody, which offers several advantages including:</p> <ul style="list-style-type: none"> - High batch-to-batch consistency and reproducibility - Improved sensitivity and specificity - Long-term security of supply - Animal-free production <p>For more information see here.</p> <p>Our RabMAb[®] technology is a patented hybridoma-based technology for making rabbit monoclonal antibodies. For details on our patents, please refer to RabMAb[®] patents.</p>

性能

形式	Liquid
存放说明	Shipped at 4°C. Store at -20°C. Stable for 12 months at -20°C.
存储溶液	pH: 7.2 Preservative: 0.05% Sodium azide Constituents: 0.1% BSA, 40% Glycerol (glycerin, glycerine), 9.85% Tris glycine, 50% Tissue culture supernatant
纯度	Protein A purified

克隆	单克隆
克隆编号	EPR2540Y
同种型	IgG

应用

The Abpromise guarantee **Abpromise™承诺保证使用ab68182于以下的经测试应用**

“应用说明”部分下显示的仅为推荐的起始稀释度;实际最佳的稀释度/浓度应由使用者检定。

应用	Ab评论	说明
WB		1/1000 - 1/2000. Detects a band of approximately 55 kDa (predicted molecular weight: 53 kDa).

应用说明 Is unsuitable for IHC-P.

靶标

功能	Effector protein for Rho-type GTPases, providing a link with the Arp2/3 complex that regulates the structure and dynamics of the actin cytoskeleton. Important for efficient actin polymerization. Possible regulator of lymphocyte and platelet function.
-----------	---

组织特异性	Expressed predominantly in the thymus. Also found, to a much lesser extent, in the spleen.
--------------	--

疾病相关

Defects in WAS are the cause of Wiskott-Aldrich syndrome (WAS) [MIM:301000]; also known as eczema-thrombocytopenia-immunodeficiency syndrome. WAS is an X-linked recessive immunodeficiency characterized by eczema, thrombocytopenia, recurrent infections, and bloody diarrhea. Death usually occurs before age 10.

Defects in WAS are the cause of thrombocytopenia type 1 (THC1) [MIM:313900]. Thrombocytopenia is defined by a decrease in the number of platelets in circulating blood, resulting in the potential for increased bleeding and decreased ability for clotting.

Defects in WAS are a cause of neutropenia severe congenital X-linked (XLN) [MIM:300299]. XLN is an immunodeficiency syndrome characterized by recurrent major bacterial infections, severe congenital neutropenia, and monocytopenia.

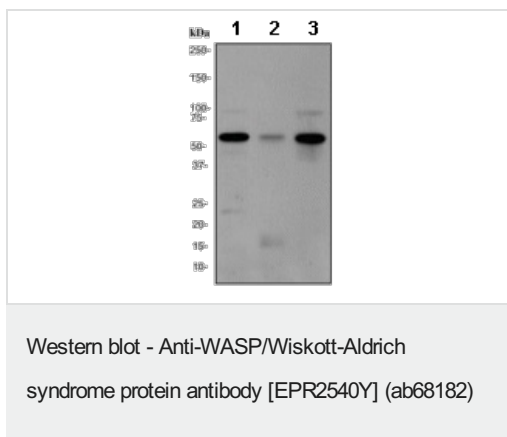
序列相似性

Contains 1 CRIB domain.
Contains 1 WH1 domain.
Contains 1 WH2 domain.

结构域 The WH1 (Wasp homology 1) domain may bind a Pro-rich ligand. The CRIB (Cdc42/Rac-interactive-binding) region binds to the C-terminal WH2 domain in the autoinhibited state of the protein. Binding of Rho-type GTPases to the CRIB induces a conformation change and leads to activation.

细胞定位 Cytoplasm > cytoskeleton.

图片



All lanes : Anti-WASP/Wiskott-Aldrich syndrome protein antibody [EPR2540Y] (ab68182) at 1/2000 dilution

Lane 1 : TF1 cell lysate

Lane 2 : U937 cell lysate

Lane 3 : Jurkat cell lysate

Lysates/proteins at 10 µg per lane.

Secondary

All lanes : goat anti-rabbit HRP at 1/2000 dilution

Predicted band size: 53 kDa

Observed band size: 55 kDa

Why choose a recombinant antibody?

Research with confidence
Consistent and reproducible results

Long-term and scalable supply
Recombinant technology

Success from the first experiment
Confirmed specificity

Ethical standards compliant
Animal-free production

Anti-WASP/Wiskott-Aldrich syndrome protein antibody [EPR2540Y] (ab68182)

Please note: All products are "FOR RESEARCH USE ONLY. NOT FOR USE IN DIAGNOSTIC PROCEDURES"

Our Abpromise to you: Quality guaranteed and expert technical support

- Replacement or refund for products not performing as stated on the datasheet
- Valid for 12 months from date of delivery
- Response to your inquiry within 24 hours
- We provide support in Chinese, English, French, German, Japanese and Spanish
- Extensive multi-media technical resources to help you
- We investigate all quality concerns to ensure our products perform to the highest standards

If the product does not perform as described on this datasheet, we will offer a refund or replacement. For full details of the Abpromise, please visit <https://www.abcam.cn/abpromise> or contact our technical team.

Terms and conditions

- Guarantee only valid for products bought direct from Abcam or one of our authorized distributors