

Anti-VPS37D antibody ab122683

2 图像

概述

| | |
|--------------|---|
| 产品名称 | Anti-VPS37D抗体 |
| 描述 | 兔多克隆抗体to VPS37D |
| 宿主 | Rabbit |
| 经测试应用 | 适用于: IHC-P, ICC/IF |
| 种属反应性 | 与反应: Human |
| 免疫原 | antigen sequence: LRDLLQDEPK LDRVRLSRK FQGLQLEREA CLASNYALAK ENLALRPRLE MGRAALAIKY QELREVAENC ADKLQRLEES MHRWSPHC, corresponding to amino acids 27-114 of Human VPS37D. Run BLAST with Expasy Run BLAST with NCBI |
| 阳性对照 | IHC: Human liver tissue. ICC/IF: Human cell line SH-SY5Y. |
| 常规说明 | <p>The Life Science industry has been in the grips of a reproducibility crisis for a number of years. Abcam is leading the way in addressing this with our range of recombinant monoclonal antibodies and knockout edited cell lines for gold-standard validation. Please check that this product meets your needs before purchasing.</p> <p>If you have any questions, special requirements or concerns, please send us an inquiry and/or contact our Support team ahead of purchase. Recommended alternatives for this product can be found below, along with publications, customer reviews and Q&As</p> |

性能

| | |
|-------------|---|
| 形式 | Liquid |
| 存放说明 | Shipped at 4°C. Upon delivery aliquot and store at -20°C. Avoid freeze / thaw cycles. |
| 存储溶液 | pH: 7.20 Preservative: 0.02% Sodium azide Constituents: 40% Glycerol (glycerin, glycerine), 59% PBS |
| 纯度 | Immunogen affinity purified |
| 克隆 | 多克隆 |
| 同种型 | IgG |

应用

The Abpromise guarantee

Abpromise™ 承诺保证使用 ab122683 于以下的经测试应用

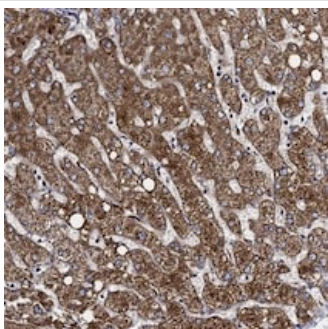
“应用说明”部分 下显示的仅为推荐的起始稀释度;实际最佳的稀释度/浓度应由使用者检定。

| 应用 | Ab评论 | 说明 |
|--------|------|---|
| IHC-P | | 1/20 - 1/50. Perform heat mediated antigen retrieval with citrate buffer pH 6 before commencing with IHC staining protocol. |
| ICC/IF | | Use a concentration of 0.25 - 2 µg/ml. |

靶标

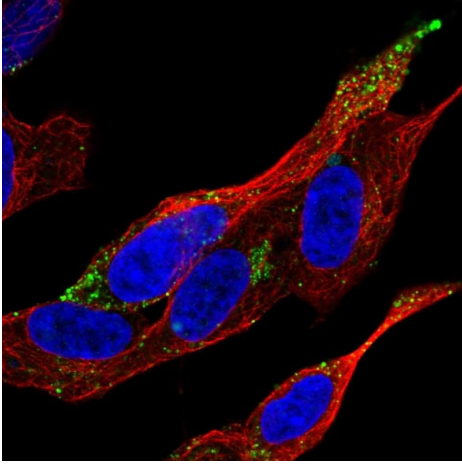
| | |
|--------------|--|
| 功能 | Component of the ESCRT-I complex, a regulator of vesicular trafficking process. Required for the sorting of endocytic ubiquitinated cargos into multivesicular bodies. May be involved in cell growth and differentiation. |
| 疾病相关 | Note=VPS37D is located in the Williams-Beuren syndrome (WBS) critical region. WBS results from a hemizygous deletion of several genes on chromosome 7q11.23, thought to arise as a consequence of unequal crossing over between highly homologous low-copy repeat sequences flanking the deleted region. |
| 序列相似性 | Belongs to the VPS37 family. Contains 1 VPS37 C-terminal domain. |
| 细胞定位 | Late endosome membrane. |

图片



ab122683, at 1/20 dilution, staining VPS37D in paraffin-embedded Human liver tissue by Immunohistochemistry.

Immunohistochemistry (Formalin/PFA-fixed paraffin-embedded sections) - Anti-VPS37D antibody (ab122683)



Immunocytochemistry/ Immunofluorescence - Anti-VPS37D antibody (ab122683)

Immunocytochemistry/immunofluorescence analysis of human cell line SH-SY5Y labelling VPS37D with ab122683 at 2 µg/mL shows localization to vesicles.

Please note: All products are "FOR RESEARCH USE ONLY. NOT FOR USE IN DIAGNOSTIC PROCEDURES"

Our Abpromise to you: Quality guaranteed and expert technical support

- Replacement or refund for products not performing as stated on the datasheet
- Valid for 12 months from date of delivery
- Response to your inquiry within 24 hours
- We provide support in Chinese, English, French, German, Japanese and Spanish
- Extensive multi-media technical resources to help you
- We investigate all quality concerns to ensure our products perform to the highest standards

If the product does not perform as described on this datasheet, we will offer a refund or replacement. For full details of the Abpromise, please visit <https://www.abcam.cn/abpromise> or contact our technical team.

Terms and conditions

- Guarantee only valid for products bought direct from Abcam or one of our authorized distributors