

### Anti-VPS26 antibody ab23892

敲除验证

★★★★☆ 12 Abreviews 59 References 6 图像

#### 概述

|       |   |
|-------|---|
| 产品名称  | Anti-VPS26抗体  |
| 描述    | 兔多克隆抗体to VPS26  |
| 宿主    | Rabbit  |
| 特异性   | Replenishment batches of our polyclonal antibody, ab23892 are tested in WB. Previous batches were additionally validated in ICC/IF. This application is still expected to work and is covered by our Abpromise guarantee. You may also be interested in our alternative recombinant antibody, <a href="#">ab181352</a> .  |
| 经测试应用 | 适用于: WB, ICC/IF   |
| 种属反应性 | 与反应: Mouse, Human<br>预测可用于: Rat    |
| 免疫原   | Synthetic peptide corresponding to Human VPS26 aa 300 to the C-terminus (C terminal) conjugated to keyhole limpet haemocyanin.<br>(Peptide available as <a href="#">ab24288</a> )   |
| 阳性对照  | ICC/IF: U2-OS cells.  |
| 常规说明  | <p>The Life Science industry has been in the grips of a reproducibility crisis for a number of years. Abcam is leading the way in addressing this with our range of recombinant monoclonal antibodies and knockout edited cell lines for gold-standard validation. Please check that this product meets your needs before purchasing.</p> <p>If you have any questions, special requirements or concerns, please send us an inquiry and/or contact our Support team ahead of purchase. Recommended alternatives for this product can be found below, along with publications, customer reviews and Q&amp;As</p> |

#### 性能

|      |  |
|------|--|
| 形式   | Liquid   |
| 存放说明 | Shipped at 4°C. Store at +4°C short term (1-2 weeks). Upon delivery aliquot. Store at -20°C or -80°C. Avoid freeze / thaw cycle. |
| 存储溶液 | pH: 7.40<br>Preservative: 0.02% Sodium azide   |

Constituent: PBS

Batches of this product that have a concentration < 1mg/ml may have BSA added as a stabilising agent. If you would like information about the formulation of a specific lot, please contact our scientific support team who will be happy to help.

**纯度** Immunogen affinity purified  
**克隆** 多克隆  
**同种型** IgG

## 应用

**The Abpromise guarantee** Abpromise™ 承诺保证使用ab23892于以下的经测试应用

“应用说明”部分 下显示的仅为推荐的起始稀释度;实际最佳的稀释度/浓度应由使用者检定。

| 应用     | Ab评论      | 说明   |
|--------|-----------|--|
| WB     | ★★★★★ (5) | Use a concentration of 1 µg/ml. Detects a band of approximately 40 kDa (predicted molecular weight: 40 kDa).<br>Abcam recommends using milk as the blocking agent. |
| ICC/IF | ★★★★★ (5) | Use a concentration of 1 µg/ml.  |

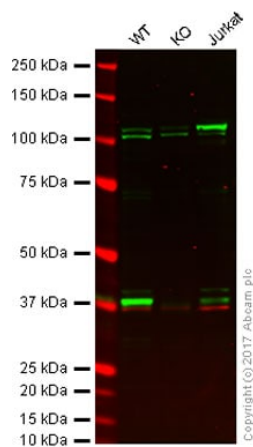
## 靶标

**功能** Essential component of the retromer complex, a complex required to retrieve lysosomal enzyme receptors (IGF2R and M6PR) from endosomes to the trans-Golgi network. Also required to regulate transcytosis of the polymeric immunoglobulin receptor (pIgR-pIgA).

**序列相似性** Belongs to the VPS26 family.

**细胞定位** Cytoplasm. Endosome membrane.

## 图片



Western blot - Anti-VPS26 antibody (ab23892)

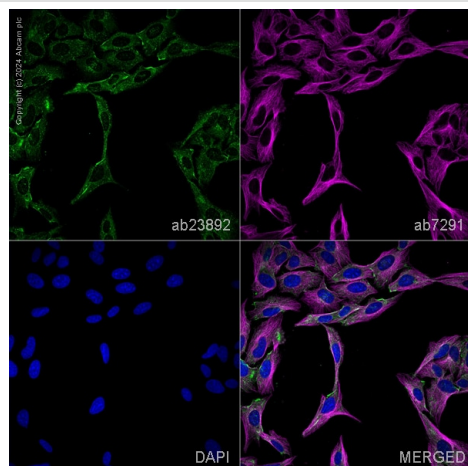
**Lane 1:** Wild-type HAP1 cell lysate (20 µg)

**Lane 2:** VPS26 knockout HAP1 cell lysate (20 µg)

**Lane 3:** Jurkat cell lysate (20 µg)

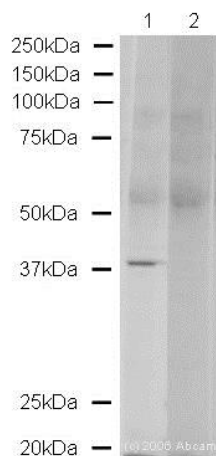
**Lanes 1 - 3:** Merged signal (red and green). Green - ab23892 observed at 40 kDa. Red - loading control, **ab8245**, observed at 37 kDa.

ab23892 was shown to recognize VPS26 when VPS26 knockout samples were used, along with additional cross-reactive bands. Wild-type and VPS26 knockout samples were subjected to SDS-PAGE. ab23892 at a concentration of 1 µg/ml and **ab8245** (loading control to GAPDH) diluted to 1/10000 were incubated overnight at 4°C. Blots were developed with Goat anti-Rabbit IgG H&L (IRDye® 800CW) preadsorbed (**ab216773**) and Goat anti-Mouse IgG H&L (IRDye® 680RD) preadsorbed (**ab216776**) secondary antibodies at 1/10000 dilution for 1 hour at room temperature before imaging.



Immunocytochemistry/ Immunofluorescence - Anti-VPS26 antibody (ab23892)

ab23892 staining VPS26 in U2-OS cells. The cells were fixed with 100% methanol (5 min), permeabilized with 0.1% PBS-Tween for 5 minutes and then blocked with 1% BSA/10% normal goat serum/0.3M glycine in 0.1%PBS-Tween for 1h. The cells were then incubated overnight at 4°C with ab23892 at 5µg/ml and **ab7291**, Mouse monoclonal [DM1A] to alpha Tubulin - Loading Control. Cells were then incubated with **ab150081**, Goat polyclonal Secondary Antibody to Rabbit IgG - H&L (Alexa Fluor® 488), pre-adsorbed at 1/1000 dilution (shown in green) and **ab150120**, Goat polyclonal Secondary Antibody to Mouse IgG - H&L (Alexa Fluor® 594), pre-adsorbed at 1/1000 dilution (shown in pseudocolour magenta). Nuclear DNA was labelled with DAPI (shown in blue). Image was acquired with a high-content analyser (Operetta CLS, Perkin Elmer) and a maximum intensity projection of confocal sections is shown.



Western blot - Anti-VPS26 antibody (ab23892)

**All lanes :** Anti-VPS26 antibody (ab23892) at 1 µg/ml

**Lane 1 :** Human kidney lysate

**Lane 2 :** Human kidney lysate with Human VPS26 peptide (**ab24288**) at 1 µg/ml

Lysates/proteins at 20 µg per lane.

#### Secondary

**All lanes :** Alexa Fluor Goat polyclonal to Rabbit IgG (700) at 1/10000 dilution

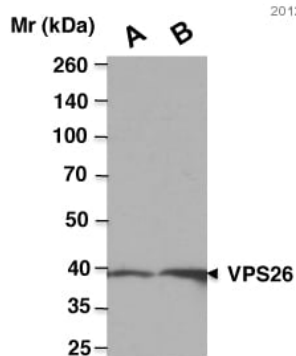
Performed under reducing conditions.

**Predicted band size:** 40 kDa

**Observed band size:** 37 kDa

**Additional bands at:** 25 kDa, 50 kDa. We are unsure as to the identity of these extra bands.

ab23892 detects a band of ~ 38kDa in Human kidney lysate. This band is quenched by the addition of the immunizing peptide, **ab24288**. ab23892 also detects a band of the correct size in HEK293 and mouse kidney lysate (data not shown).



**A:** NRK cell lysate (25 µg)

**B:** NRK cell lysate (50 µg)

Western blot - Anti-VPS26 antibody (ab23892)

This image is courtesy of an anonymous Abreview

**All lanes :** Anti-VPS26 antibody (ab23892) at 1/1000 dilution

**Lane 1 :** Rat NRK whole cell lysate at 25 µg

**Lane 2 :** Rat NRK whole cell lysate at 50 µg

#### Secondary

**All lanes :** HRP-conjugated goat anti-rabbit polyclonal IgG at 1/5000 dilution

Developed using the ECL technique.

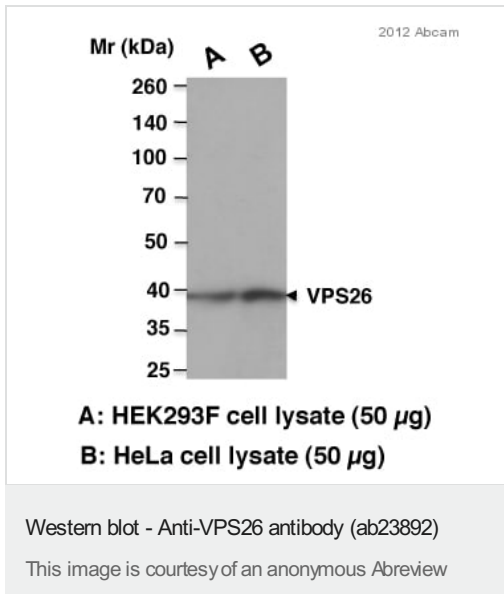
Performed under reducing conditions.

**Predicted band size:** 40 kDa

**Observed band size:** 40 kDa

**Exposure time:** 10 seconds

Blocked with 5% milk for 30 min at 25°C



**All lanes :** Anti-VPS26 antibody (ab23892) at 1/1000 dilution

**Lane 1 :** HEK293T whole cell lysate

**Lane 2 :** HeLa whole cell lysate

Lysates/proteins at 50 µg per lane.

#### Secondary

**All lanes :** HRP-conjugated goat anti-rabbit polyclonal IgG at 1/5000 dilution

Developed using the ECL technique.

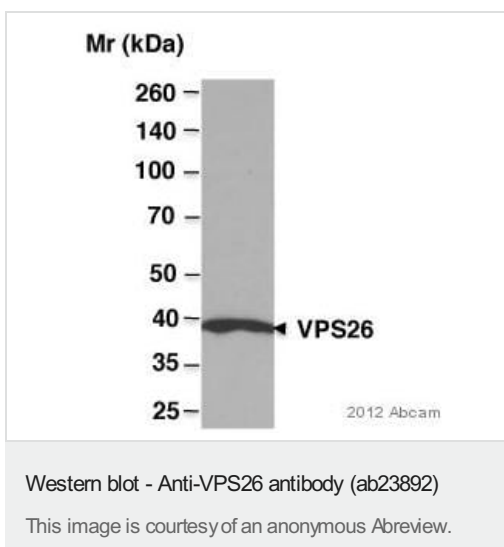
Performed under reducing conditions.

**Predicted band size:** 40 kDa

**Observed band size:** 40 kDa

**Exposure time:** 2 seconds

Blocked with 5% milk for 30 min at 25°C



Anti-VPS26 antibody (ab23892) at 1/1000 dilution + COS whole cell lysate, African Green Monkey at 50 µg with Milk, 30 minutes, 25°C at 5 %

Developed using the ECL technique.

Performed under reducing conditions.

**Predicted band size:** 40 kDa

**Exposure time:** 10 seconds

**Please note:** All products are "FOR RESEARCH USE ONLY. NOT FOR USE IN DIAGNOSTIC PROCEDURES"

### **Our Abpromise to you: Quality guaranteed and expert technical support**

---

- Replacement or refund for products not performing as stated on the datasheet
- Valid for 12 months from date of delivery
- Response to your inquiry within 24 hours
  
- We provide support in Chinese, English, French, German, Japanese and Spanish
- Extensive multi-media technical resources to help you
- We investigate all quality concerns to ensure our products perform to the highest standards

If the product does not perform as described on this datasheet, we will offer a refund or replacement. For full details of the Abpromise, please visit <https://www.abcam.cn/abpromise> or contact our technical team.

### **Terms and conditions**

---

- Guarantee only valid for products bought direct from Abcam or one of our authorized distributors