

Anti-VPREB3 antibody ab88487

1 图像

概述

产品名称	Anti-VPREB3抗体
描述	兔多克隆抗体to VPREB3
宿主	Rabbit
经测试应用	适用于: WB
种属反应性	与反应: Human
免疫原	Synthetic peptide corresponding to Human VPREB3 aa 50 to the C-terminus conjugated to keyhole limpet haemocyanin. (Peptide available as ab104280)
阳性对照	This antibody gave a positive control in Raji and Ramos whole cell lysates.
常规说明	<p>The Life Science industry has been in the grips of a reproducibility crisis for a number of years. Abcam is leading the way in addressing this with our range of recombinant monoclonal antibodies and knockout edited cell lines for gold-standard validation. Please check that this product meets your needs before purchasing.</p> <p>If you have any questions, special requirements or concerns, please send us an inquiry and/or contact our Support team ahead of purchase. Recommended alternatives for this product can be found below, along with publications, customer reviews and Q&As</p>

性能

形式	Liquid
存放说明	Shipped at 4°C. Store at +4°C short term (1-2 weeks). Upon delivery aliquot. Store at -20°C or -80°C. Avoid freeze / thaw cycle.
存储溶液	pH: 7.40 Preservative: 0.02% Sodium azide Constituent: PBS
纯度	Batches of this product that have a concentration < 1mg/ml may have BSA added as a stabilising agent. If you would like information about the formulation of a specific lot, please contact our scientific support team who will be happy to help.
克隆	Immunogen affinity purified 多克隆

应用

The Abpromise guarantee **Abpromise™**承诺保证使用ab88487于以下的经测试应用

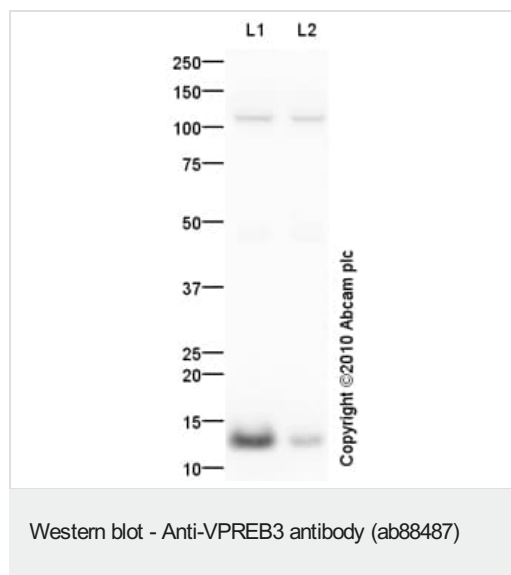
“应用说明”部分 下显示的仅为推荐的起始稀释度;实际最佳的稀释度/浓度应由使用者检定。

应用	Ab评论	说明
WB		Use a concentration of 1 µg/ml. Detects a band of approximately 14 kDa (predicted molecular weight: 14 kDa).

靶标

功能	Associates with the Ig-µ chain to form a molecular complex that is expressed on the surface of pre-B-cells.
组织特异性	Expressed in B-cell precursors. Expressed in fetal liver, bone marrow, spleen and lymph node.
序列相似性	Belongs to the immunoglobulin superfamily. Contains 1 Ig-like (immunoglobulin-like) domain.

图片



All lanes : Anti-VPREB3 antibody (ab88487) at 1 µg/ml

Lane 1 : Ramos (Human Burkitt's lymphoma cell line) Whole Cell Lysate

Lane 2 : Raji (Human Burkitt's lymphoma cell line) Whole Cell Lysate

Lysates/proteins at 10 µg per lane.

Secondary

All lanes : Goat Anti-Rabbit IgG H&L (HRP) preadsorbed (**ab97080**) at 1/5000 dilution

Developed using the ECL technique.

Performed under reducing conditions.

Predicted band size: 14 kDa

Observed band size: 14 kDa

Additional bands at: 110 kDa. We are unsure as to the identity of these extra bands.

Exposure time: 16 minutes

Please note: All products are "FOR RESEARCH USE ONLY. NOT FOR USE IN DIAGNOSTIC PROCEDURES"

Our Abpromise to you: Quality guaranteed and expert technical support

- Replacement or refund for products not performing as stated on the datasheet
- Valid for 12 months from date of delivery
- Response to your inquiry within 24 hours
- We provide support in Chinese, English, French, German, Japanese and Spanish
- Extensive multi-media technical resources to help you
- We investigate all quality concerns to ensure our products perform to the highest standards

If the product does not perform as described on this datasheet, we will offer a refund or replacement. For full details of the Abpromise, please visit <https://www.abcam.cn/abpromise> or contact our technical team.

Terms and conditions

- Guarantee only valid for products bought direct from Abcam or one of our authorized distributors