

Anti-Von Willebrand Factor antibody [3E2D10 + VWF635] ab201336

[8 References](#) [1 图像](#)

概述

产品名称	Anti-Von Willebrand Factor抗体[3E2D10 + VWF635]
描述	小鼠单克隆抗体[3E2D10 + VWF635] to Von Willebrand Factor
宿主	Mouse
经测试应用	适用于: IP, WB, ICC/IF, Flow Cyt, IHC-Fr, IHC-P
种属反应性	与反应: Human
免疫原	Recombinant fragment corresponding to Human Von Willebrand Factor. Database link: P04275
阳性对照	IHC-P: Human uterus tissue.
常规说明	<p>The Life Science industry has been in the grips of a reproducibility crisis for a number of years. Abcam is leading the way in addressing this with our range of recombinant monoclonal antibodies and knockout edited cell lines for gold-standard validation. Please check that this product meets your needs before purchasing.</p> <p>If you have any questions, special requirements or concerns, please send us an inquiry and/or contact our Support team ahead of purchase. Recommended alternatives for this product can be found below, along with publications, customer reviews and Q&As</p> <p>Please note that this antibody is an oligoclonal antibody. It is a cocktail of monoclonal antibodies that have been carefully selected. Oligoclonal antibodies have not only the specificity and batch-to-batch consistency of a monoclonal antibody, but also have the advantage of the sensitivity of a polyclonal antibody due to their ability to recognize multiple epitopes on an antigen.</p>

性能

形式	Liquid
存放说明	Shipped at 4°C. Store at +4°C short term (1-2 weeks). Upon delivery aliquot. Store at -20°C long term. Avoid freeze / thaw cycle.
存储溶液	pH: 7.2 Preservative: 0.05% Sodium azide Constituents: 99% PBS, 0.05% BSA
纯度	Protein A/G purified

纯化说明	ab201336 is purified from Bioreactor Concentrate.
克隆	单克隆
克隆编号	3E2D10 + VWF635
同种型	IgG1
轻链类型	kappa

应用

The Abpromise guarantee **Abpromise™**承诺保证使用ab201336于以下的经测试应用

“应用说明”部分 下显示的仅为推荐的起始稀释度;实际最佳的稀释度/浓度应由使用者检定。

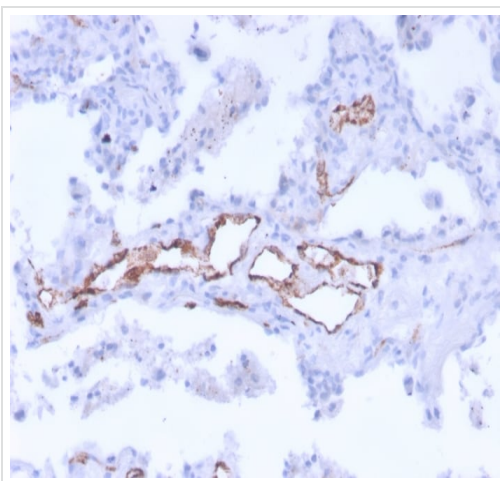
应用	Ab评论	说明
IP		Use at an assay dependent concentration.
WB		Use at an assay dependent concentration.
ICC/IF		Use at an assay dependent concentration.
Flow Cyt		Use at an assay dependent concentration. ab170190 - Mouse monoclonal IgG1, is suitable for use as an isotype control with this antibody.
IHC-Fr		Use at an assay dependent concentration. For 30 min at RT.
IHC-P		Use a concentration of 1 - 2 µg/ml. Perform heat mediated antigen retrieval with citrate buffer pH 6 before commencing with IHC staining protocol. For 30 min at RT.

靶标

功能	Important in the maintenance of hemostasis, it promotes adhesion of platelets to the sites of vascular injury by forming a molecular bridge between sub-endothelial collagen matrix and platelet-surface receptor complex GPIb-IX-V. Also acts as a chaperone for coagulation factor VIII, delivering it to the site of injury, stabilizing its heterodimeric structure and protecting it from premature clearance from plasma.
组织特异性	Plasma.
疾病相关	Defects in VWF are the cause of von Willebrand disease (VWD) [MIM:277480]. VWD defines a group of hemorrhagic disorders in which the von Willebrand factor is either quantitatively or qualitatively abnormal resulting in altered platelet function. Symptoms vary depending on severity and disease type but may include prolonged bleeding time, deficiency of factor VIII and impaired platelet adhesion. Type I von Willebrand disease is the most common form and is characterized by partial quantitative plasmatic deficiency of an otherwise structurally and functionally normal Willebrand factor; type II is associated with a qualitative deficiency and functional anomalies of the Willebrand factor; type III is the most severe form and is characterized by total or near-total absence of Willebrand factor in the plasma and cellular compartments, also leading to a profound deficiency of plasmatic factor VIII.

序列相似性	<p>Contains 1 CTCK (C-terminal cystine knot-like) domain.</p> <p>Contains 4 TIL (trypsin inhibitory-like) domains.</p> <p>Contains 3 VWFA domains.</p> <p>Contains 3 VWFC domains.</p> <p>Contains 4 VWFD domains.</p>
结构域	The von Willebrand antigen 2 is required for multimerization of vWF and for its targeting to storage granules.
翻译后修饰	All cysteine residues are involved in intrachain or interchain disulfide bonds. N- and O-glycosylated.
细胞定位	Secreted. Secreted > extracellular space > extracellular matrix. Localized to storage granules.

图片



Immunohistochemical analysis of formalin-fixed, paraffin-embedded Human uterus tissue labeling Von Willebrand Factor with ab201336 at 1 µg/ml.

Immunohistochemistry (Formalin/PFA-fixed paraffin-embedded sections) - Anti-Von Willebrand Factor antibody [3E2D10 + VWF635] (ab201336)

Please note: All products are "FOR RESEARCH USE ONLY. NOT FOR USE IN DIAGNOSTIC PROCEDURES"

Our Abpromise to you: Quality guaranteed and expert technical support

- Replacement or refund for products not performing as stated on the datasheet
- Valid for 12 months from date of delivery
- Response to your inquiry within 24 hours
- We provide support in Chinese, English, French, German, Japanese and Spanish
- Extensive multi-media technical resources to help you
- We investigate all quality concerns to ensure our products perform to the highest standards

If the product does not perform as described on this datasheet, we will offer a refund or replacement. For full details of the Abpromise, please visit <https://www.abcam.cn/abpromise> or contact our technical team.

Terms and conditions

- Guarantee only valid for products bought direct from Abcam or one of our authorized distributors